

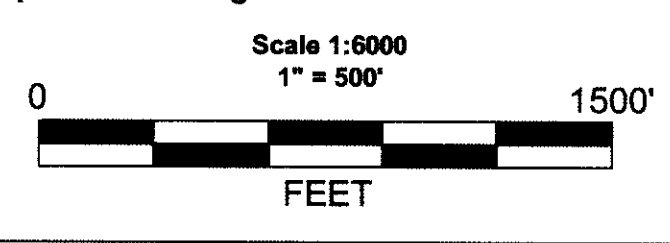
14N23E 14N24E
 13N23E 13N24E
 The SW Corner of HB 58
 bears N35°59'E and is
 2430' from the SW corner
 of Section 31 T14N R24E

DOUGLAS COUNTY

**Location Map for HB 9-74 & 119-123
 Lode Mining Claims
 Douglas County Sheet 1 of 1**

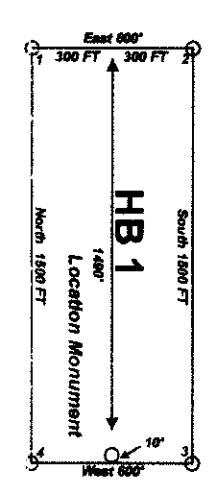
"HB" lode claims 9-74 and 119-123 were located on 3-25-2009 and
 "HB" lode claims 1-8 and 75-118 were located on 3-26-2009 in
 Sections 25 & 36 in Township 13 North Range 23 East and in
 Sections 6 & 29-32 in Township 13 North Range 24 East and in
 Sections 24-25 in Township 14 North Range 23 East and in
 Sections 19-20, 22 and 29-32 in Township 14 North Range 24 East in
 Douglas and Lyon Counties, Nevada.

Locator:
 HoneyBadger Exploration Inc.
 1 E. Liberty St. Suite 424
 Reno, NV 89504



Notes:
 Location Monuments are set 10' from
 claim end lines unless noted otherwise.
 All location and corner monuments are
 2" X 2" X 4' wooden posts with scribed
 metal tags. All claims are 600' by 1500'
 unless noted otherwise. All bearings
 are based on UTM North.

Typical Claim



UTM N

Location Map for HB 9-74 & 119-123 Lode Mining Claims
HoneyBadger Exploration Inc. 1 E. Liberty St. Suite 424 Reno, NV 89504
HB_Claims_1-123_N27211R.DWG April 9, 2009 Drawn By: G.I.S. Land Services
Surveyed By: T&T Exploration L.L.C. Datum: 1927 Projection: UTM Zone 11 Units: Feet

DOC # 0744352
 06/03/2009 12:25 PM Deputy: SD
 OFFICIAL RECORD
 Requested By:
 T & T EXPLORATION LLC
 Douglas County - NV
 Karen Ellison - Recorder
 Page: 1 of 1 Fee: 1069.00
 BK-0609 PG-753 RPT: 0.00

