

Corner Record – Douglas County, Nevada

Douglas County - NV
Karen Ellison - Recorder
Page: 1 Of 2 Fee: 15.00
BK-0510 PG- 4131 RPTT: 0.00

When recorded, return a copy to:

USFS, LTBMU, Lands Dept.
35 College Dr.
South Lake Tahoe, CA 96150



Surveyor's Certificate

I, Mary Niederberger-Lee, a Professional Land Surveyor registered in the state of Nevada, certify that:

1. This corner record represents the establishment of restoration of a corner or accessory to a corner conducted under my direct supervision.
2. The monument or accessories perpetuated lie within the section and township/range printed on the map, and the establishment or restoration was completed on the date printed on the map.
3. This corner record has been filed pursuant to NRS 329.140 or 329.150 and complies with the provision of NAC 329.101 and any local ordinances in effect on the date the establishment or restoration was completed
4. The monument or witness monument and accessories found are of the character shown, occupy the positions indicated and are of sufficient durability.



Mary Niederberger-Lee

Exp. 12-31-2011

Mary Niederberger-Lee, PLS 11320

4-15-2010
Date Signed



Corner Record
APN: 1318-15-711-012
260 Cheyenne Cir.
S15 T13N R18E, M.D.M.

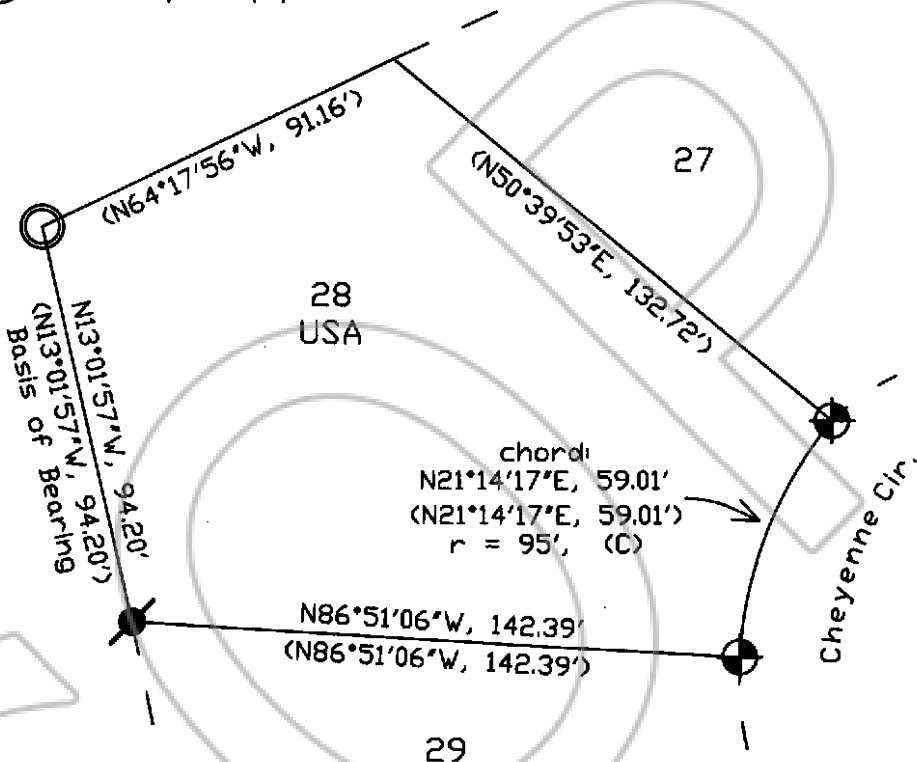
Date of Survey:
September 27, 2005

Filed as required by Statutes of
Nevada, 1969, Chapter 329

⊕ Set rebar/topper (PLS 11320)

● Fnd. rebar

○ Fnd. open pipe



(Round Hill Village Unit #2, Block A,
#29312, record bearings and distances)
(C) - calculated bearing and distance
from sub'd map

