

15

OFFICIAL RECORD  
Requested By:  
USFS

Corner Record – Douglas County, Nevada

Douglas County - NV  
Karen Ellison - Recorder

When recorded, return a copy to:

Page: 1 Of 2 Fee: 15.00  
BK-0510 PG- 4133 RPT: 0.00

USFS, LTBMU, Lands Dept.  
35 College Dr.  
South Lake Tahoe, CA 96150



Surveyor's Certificate

I, Mary Niederberger-Lee, a Professional Land Surveyor registered in the state of Nevada, certify that:

1. This corner record represents the establishment of restoration of a corner or accessory to a corner conducted under my direct supervision.
2. The monument or accessories perpetuated lie within the section and township/range printed on the map, and the establishment or restoration was completed on the date printed on the map.
3. This corner record has been filed pursuant to NRS 329.140 or 329.150 and complies with the provision of NAC 329.101 and any local ordinances in effect on the date the establishment or restoration was completed
4. The monument or witness monument and accessories found are of the character shown, occupy the positions indicated and are of sufficient durability.



*Mary Niederberger-Lee*

Exp. 12-31-2011

Mary Niederberger-Lee, PLS 11320

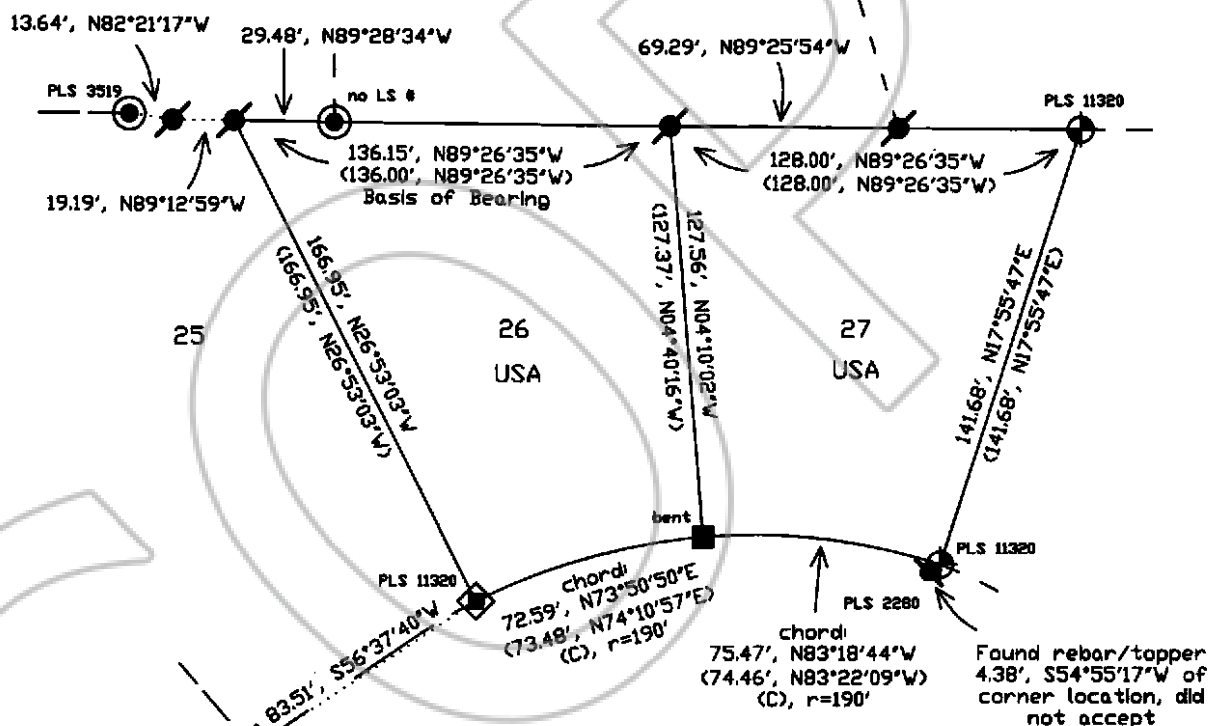
4-15-2010  
Date Signed

Corner Record  
 1318-23-710-026 & 027  
 358 & 360 Sherwood Dr  
 S23 T13N R18E, M.D.M.

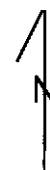
Date of Survey:  
 October 11, 2007

Filed as required by Statutes of  
 Nevada, 1969, Chapter 329

- ◆ Set 5/8" drive type (PLS 11320)
- Set 5/8" rebar/topper (PLS 11320)
- Fnd. rebar
- ⊙ Fnd. Plugged Pipe
- Fnd. 1" flat bar



(Lakewood Knolls Sub'd, #13163,  
 record bearings and distances)  
 (C) - calculated bearing and distance



1" = 60'