

APN: 1320-32-613-010
Owner: Dudley Family Trust
Recording Requested By: Shirley Anker

Douglas County - NV
Karen Ellison - Recorder

Page: 1 Of 2 Fee: 15.00
BK-0910 PG- 3346 RPTT: 0.00

When Recorded Mail To:

Shirley M. Anker
10200 Reins Way
Winnemucca, NV 89445-8748



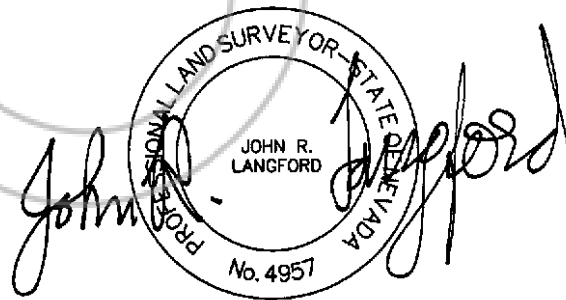
Sheet 1 of 2 Sheets

CORNER RECORD

Section 32, T 13 N, R 20 E, MDM, County of Douglas

SURVEYOR'S CERTIFICATE

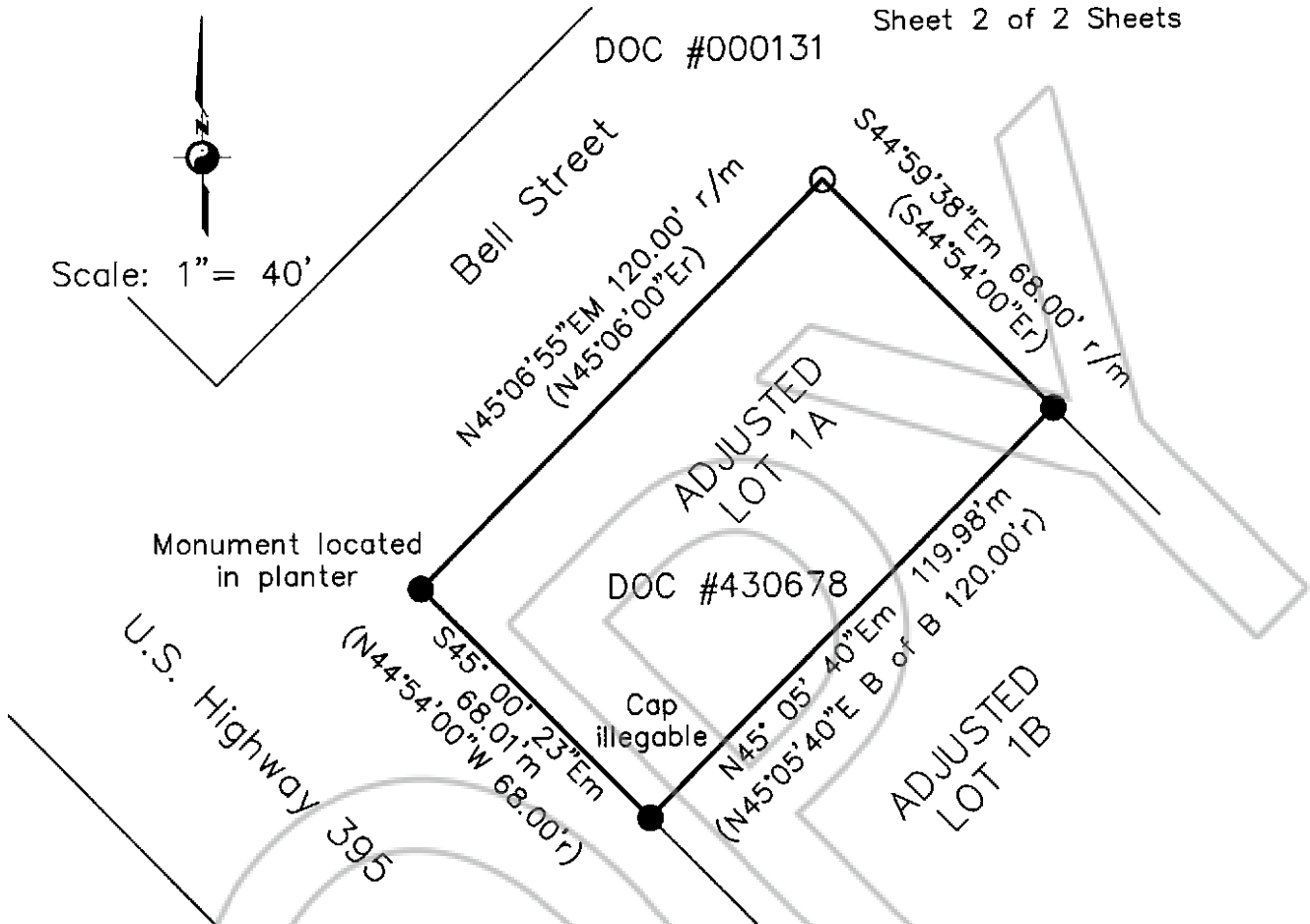
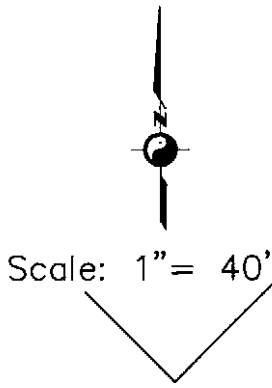
- I, John R. Langford, a Professional Land Surveyor registered in the State of Nevada, certify that:
1. This corner record represents the establishment or restoration of a corner or accessory to a corner conducted under my supervision.
 2. The monument or accessories perpetuated lie within Section 32, T 13 N, R 20 E, MDM, County of Douglas, and the establishment or restoration was completed on July 2, 2010.
 3. This Corner Record has been filed pursuant to NRS 329.140 or 329.150 and complies with the provisions of NAC 329.010 and any local ordinances in effect on the date that the establishment or restoration was completed.
 4. The monument or witness monument and accessories found are of the character shown, occupy the positions indicated, and are of sufficient durability.



John R. Langford, PLS4957
Expiration Date: 12/31/11
9/13/10

This Corner Record has been prepared to document the reestablishment of the lost northwesterly corner of Adjusted Lot 1A as it was originally monumented per Doc # 430678

DOC #000131



Monument located in planter

DOC #430678

Cap illegable

LEGEND

- Set a 1-1/2"Ø aluminum cap inscribed PLS4957 on a 5/8"Øx24" rebar flush with pavement.
- Found a 1-1/4"Ø plastic cap inscribed PLS11172 set flush with pavement unless otherwise noted.

RECORD REFERENCE

r Record of Survey to Support a Boundary Line Adjustment for ANKER FAMILY TRUST, DUDLEY and TAHOE DAILY TRIBUNE, INC. recorded on January 16, 1998 as Document No. 430678

County Recorder's Use