

SEE DETAIL 'B'

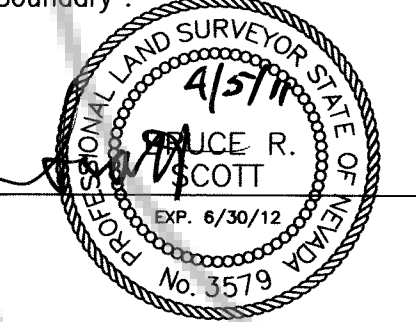
Detail B
NTS

SURVEYOR'S CERTIFICATE

I, Bruce R. Scott, a Professional Land Surveyor licensed in the State of Nevada, state and certify that:

- This map does not represent an actual survey but has been compiled from existing record information, Douglas County GIS records, and Title 18, Exhibit A entitled "Gardnerville Town Boundary" and title 18, Appendix entitled "Minden Town Boundary"

Bruce R. Scott
Bruce R. Scott, PLS 3579



MINDEN-GARDNERVILLE SANITATION DISTRICT CERTIFICATE

I, O. P. Brown, Chairman of the Minden-Gardnerville Sanitation District (MGSD), certify that this map represents the MGSD boundary and the annexation(s) shown hereon have been approved by MGSD.

O. P. Brown 4-5-11
O. P. Brown, Chairman
Minden-Gardnerville Sanitation District Date

- LEGEND:**
- Parcels Being Annexed to MGSD per this map
 - MGSD Boundary
 - 101 Legal Description Call Number - Contact Minden Gardnerville Sanitation District for corresponding legal description.

RECORDER'S CERTIFICATE

Filed this 16th day of April, 2011,
at 43 minutes past 2 o'clock
in Book 411, Page 1046
Document Number 781176, recorded at the
request of the Minden Gardnerville Sanitation District.

Colin J. ...
Douglas County Recorder

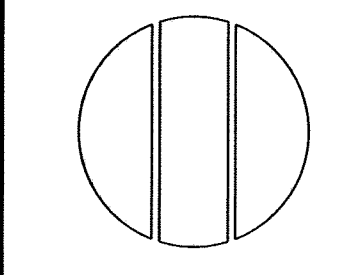
RECORD OF SURVEY TO SUPPORT
BOUNDARY LINE ADJUSTMENT FOR
MACK LAND AND CATTLE COMPANY ETAL
RECORDED JUNE 28TH 2009
BOOK 609 AT PAGE 9130 AS
DOCUMENT # 748235

**Minden-Gardnerville Sanitation District
District Boundary**

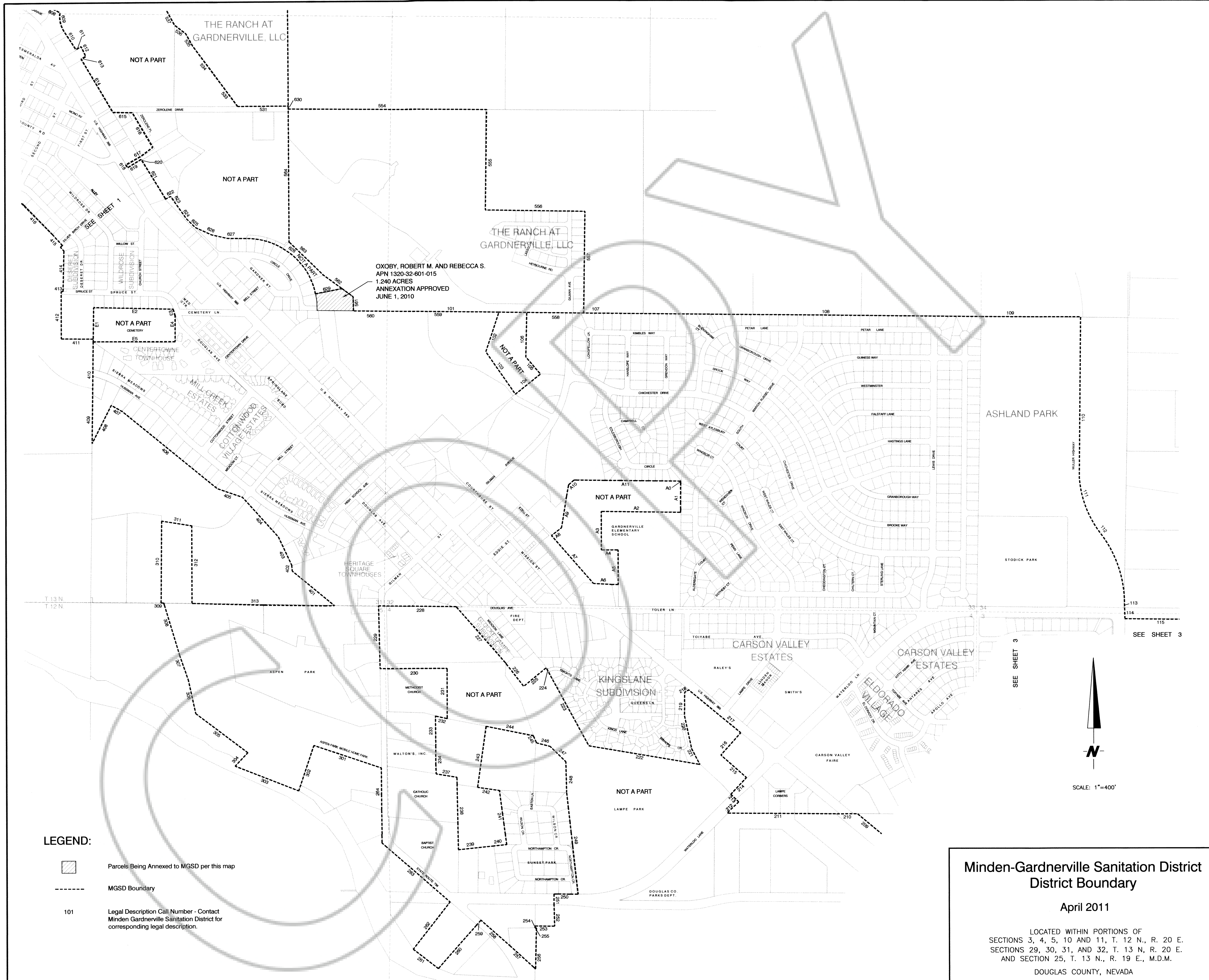
April 2011

LOCATED WITHIN PORTIONS OF
SECTIONS 3, 4, 5, 10 AND 11, T. 12 N., R. 20 E.
SECTIONS 29, 30, 31, AND 32, T. 13 N., R. 20 E.
AND SECTION 25, T. 13 N., R. 19 E., M.D.M.
DOUGLAS COUNTY, NEVADA

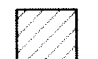
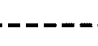
ENGINEERING • PLANNING • RESOURCE MANAGEMENT
RESOURCE CONCEPTS, INC.
340 N. MINNESOTA STREET • CARSON CITY, NEVADA 89703-4152 • OFFICE: 702-883-1600 • FAX: 702-883-1656



DATE	
REVISION	
JOB NO.	11-001-01
DATE	4/5/11
DRAWN BY	MLM
CHECKED BY	LT
SHEET 1 OF 4	



LEGEND:

-  Parcels Being Annexed to MGSD per this map
-  MGSD Boundary
- 101 Legal Description Call Number - Contact Minden Gardnerville Sanitation District for corresponding legal description.

**Minden-Gardnerville Sanitation District
District Boundary**

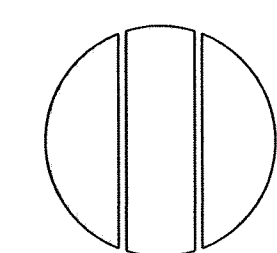
April 2011

LOCATED WITHIN PORTIONS OF
SECTIONS 3, 4, 5, 10 AND 11, T. 12 N., R. 20 E.
SECTIONS 29, 30, 31, AND 32, T. 13 N., R. 20 E.
AND SECTION 25, T. 13 N., R. 19 E., M.D.M.
DOUGLAS COUNTY, NEVADA

ENGINEERING • PLANNING • RESOURCE MANAGEMENT

RESOURCE CONCEPTS, INC.

340 N. MINNESOTA STREET • CARSON CITY, NEVADA 89703-4152 • OFFICE: 702-883-1600 • FAX: 702-883-1656

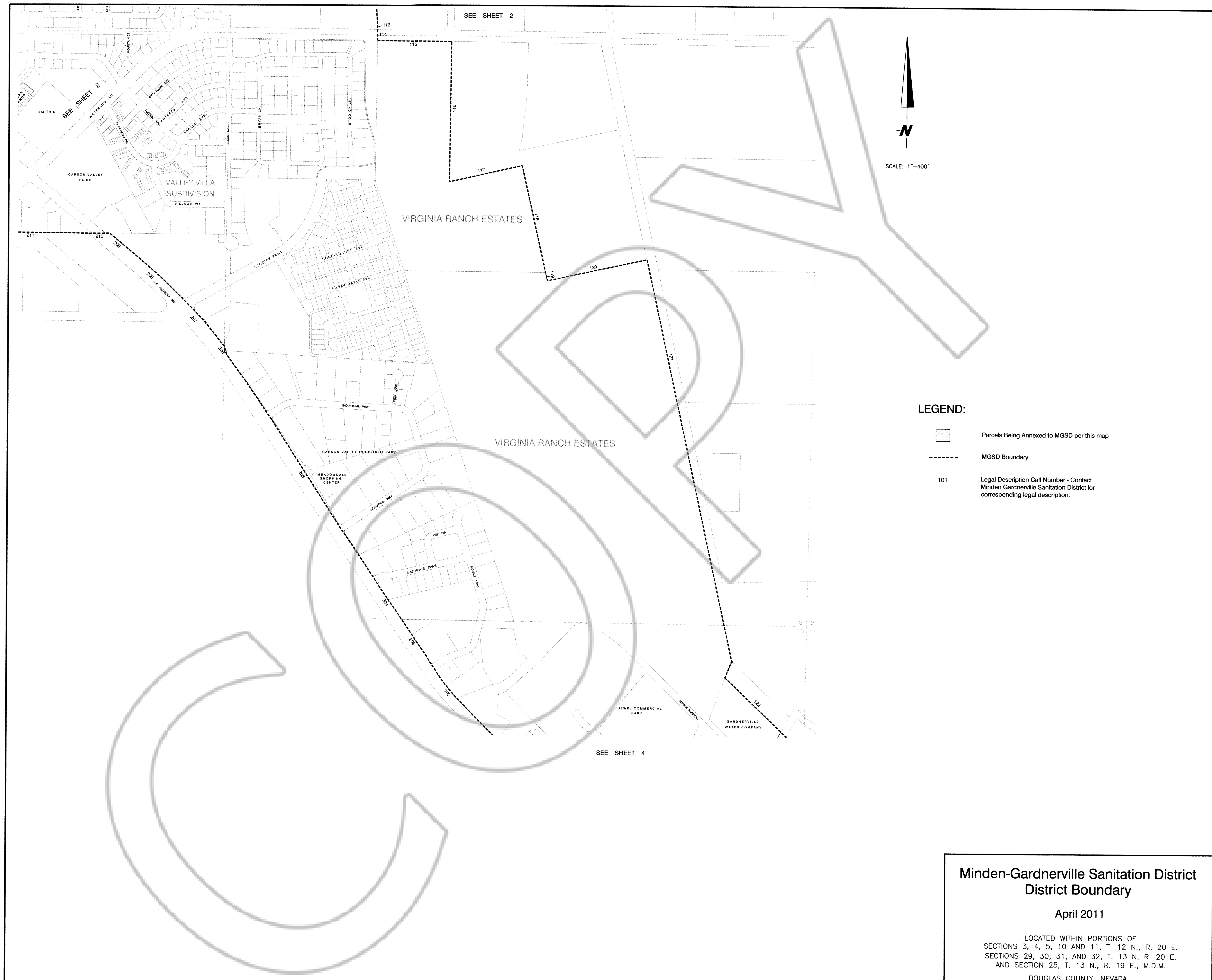




SCALE: 1"=400'

REVISION	DATE

JOB NO. 11-001-01
 DATE 4/5/11
 DRAWN: MLM
 CHECKED: LT

SHEET 2 OF 4



- LEGEND:**
-  Parcels Being Annexed to MGSD per this map
 -  MGSD Boundary
 - 101 Legal Description Call Number - Contact Minden Gardnerville Sanitation District for corresponding legal description.

**Minden-Gardnerville Sanitation District
District Boundary**

April 2011

LOCATED WITHIN PORTIONS OF
SECTIONS 3, 4, 5, 10 AND 11, T. 12 N., R. 20 E.
SECTIONS 29, 30, 31, AND 32, T. 13 N., R. 20 E.
AND SECTION 25, T. 13 N., R. 19 E., M.D.M.
DOUGLAS COUNTY, NEVADA

ENGINEERING • PLANNING • RESOURCE MANAGEMENT
RESOURCE CONCEPTS, INC.
340 N. MINNESOTA STREET • CARSON CITY, NEVADA 89703-4152 • OFFICE: 702-883-1600 • FAX: 702-883-1656

REVISION	DATE

JOB NO. 11-001-01
DATE 4/5/11
DRAWN: MLM
CHECKED: LT

SHEET 3 OF 4

