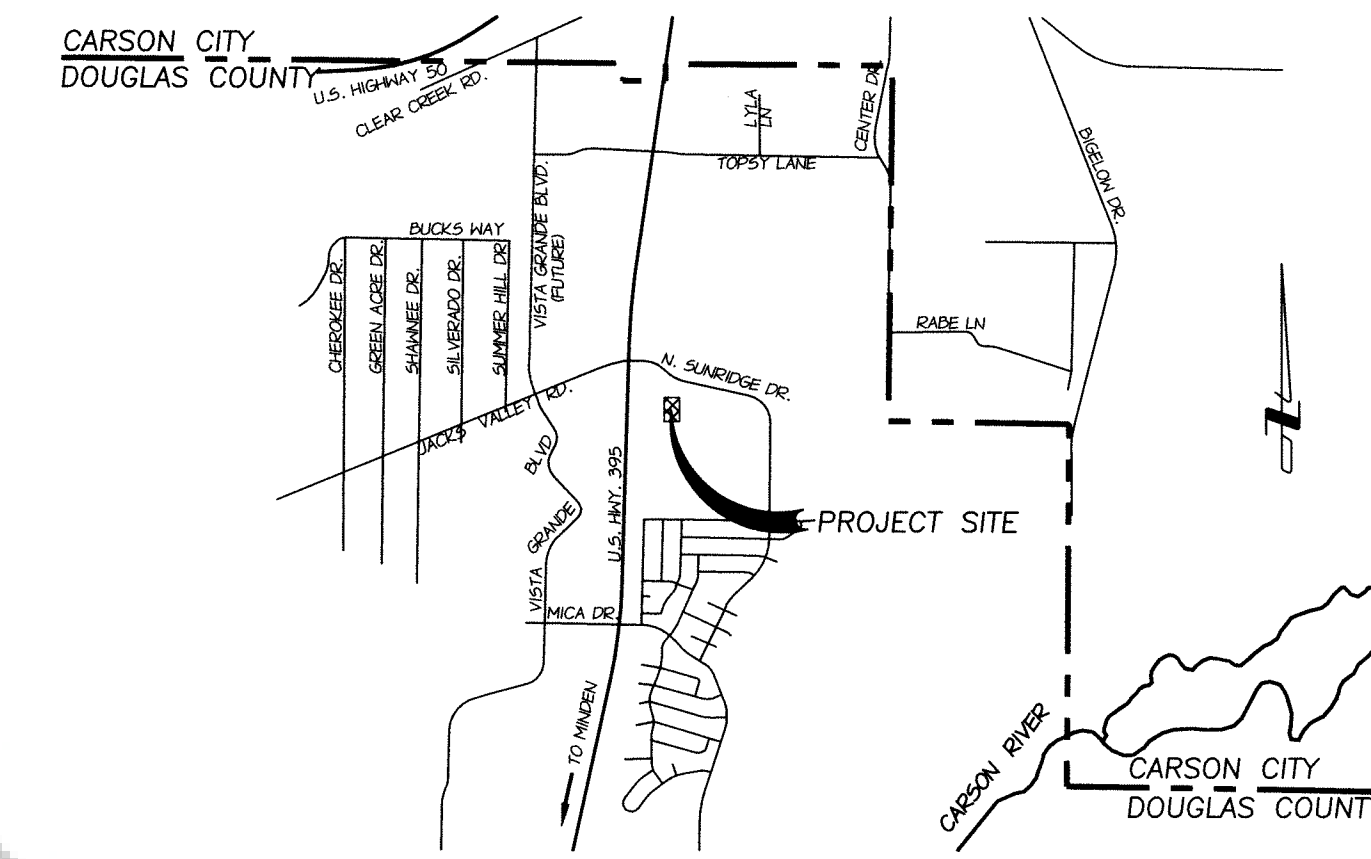
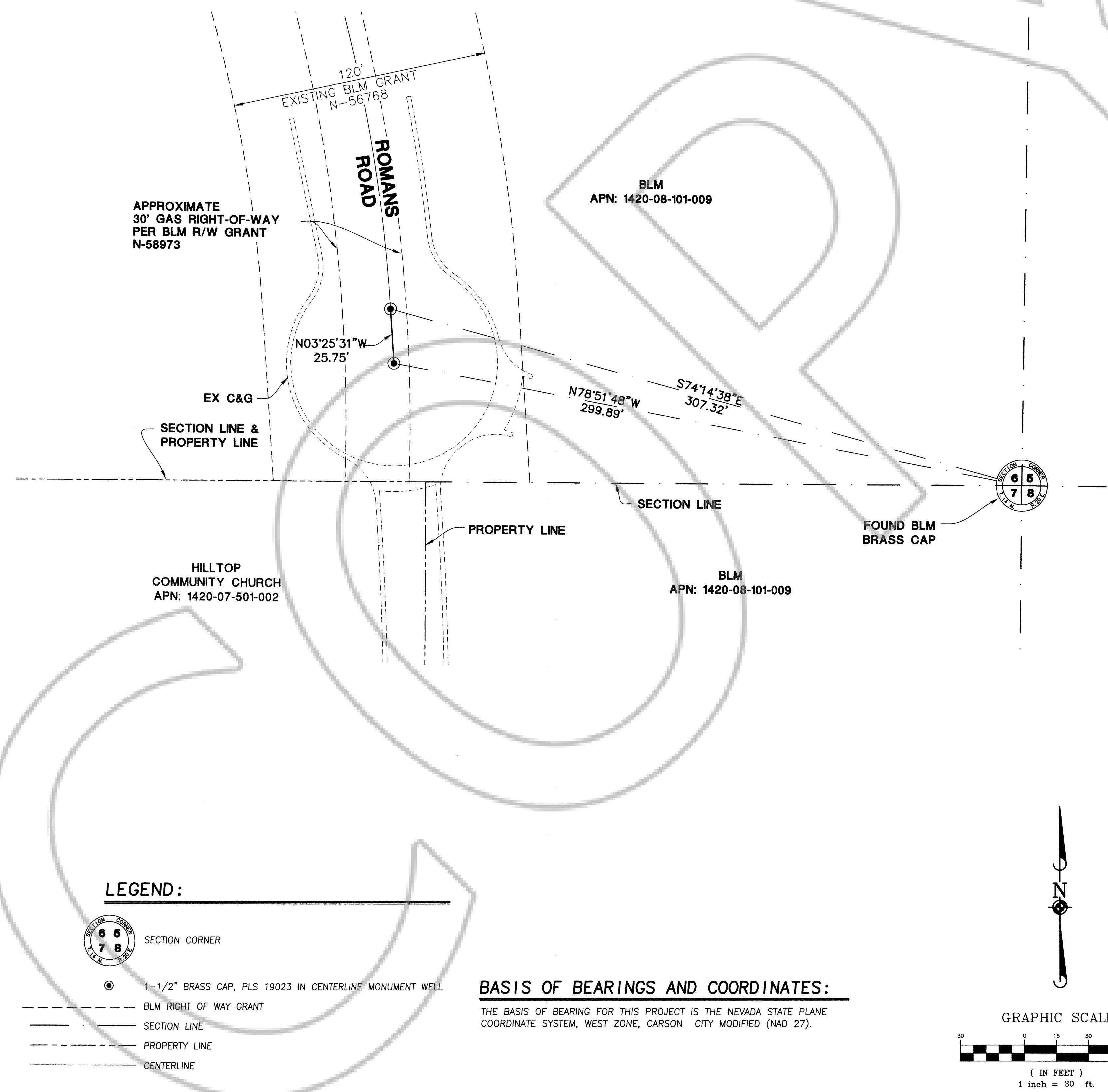


**REFERENCE DOCUMENTS**

1. BLM RIGHT OF WAY GRANT N-58973, OFFICIAL RECORDS OF THE BLM
2. BLM RECREATION OR PUBLIC PURPOSES LEASE NVN 077129, OFFICIAL RECORDS OF THE BLM
3. BLM RIGHT OF WAY GRANT AMENDED N-56768, OFFICIAL RECORDS OF THE BLM



**VICINITY MAP**  
N.T.S.

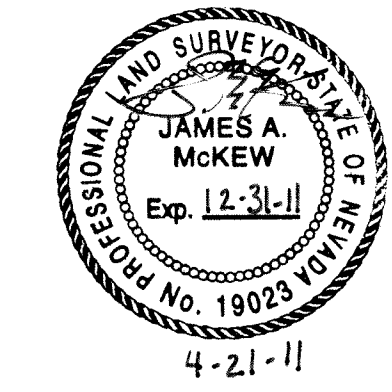


**SURVEYOR'S CERTIFICATE:**

I, JAMES A. MCKEW, A PROFESSIONAL LAND SURVEYOR LICENSED IN THE STATE OF NEVADA, CERTIFY THAT:

1. THIS PLAT REPRESENTS THE RESULTS OF A SURVEY CONDUCTED UNDER MY DIRECT SUPERVISION AT THE INSTANCE OF SIERRA LUTHERN HIGH SCHOOL.
2. THE LANDS SURVEYED LIE WITHIN SECTIONS 6, TOWNSHIP 14 NORTH, RANGE 20 EAST, MDM, AND THE SURVEY WAS COMPLETED ON MARCH 31, 2011.
3. THIS PLAT COMPLIES WITH THE APPLICABLE STATE STATUTES AND ANY LOCAL ORDINANCES IN EFFECT ON THE DATE THAT THE GOVERNING BODY GAVE ITS FINAL APPROVAL.
4. THE MONUMENTS DEPICTED ON THE PLAT ARE OF THE CHARACTER SHOWN AND OCCUPY THE POSITIONS INDICATED AND ARE OF SUFFICIENT NUMBER AND DURABILITY.

*[Signature]*  
JAMES A. MCKEW, PLS 19023  
FOR AND ON BEHALF OF  
MANHARD CONSULTING, LTD.



**CLERK / RECORDER'S CERTIFICATE:**

FILED FOR RECORD AT THE REQUEST OF James McKew  
ON THIS 21 DAY OF April 2011, AT 27 MINUTES PAST 4 O'CLOCK,  
P.M., OFFICIAL RECORDS OF DOUGLAS COUNTY, NEVADA.  
FILE NO: 781939 FEE: 21.00

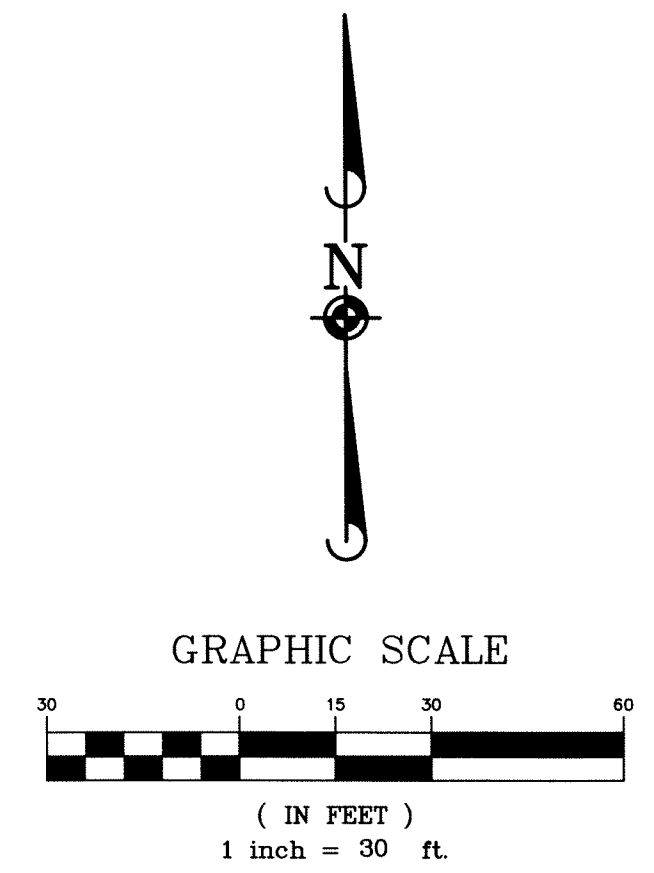
CLERK / RECORDER BY: *[Signature]* DEPUTY

**LEGEND:**

- SECTION CORNER
- 1-1/2" BRASS CAP, PLS 19023 IN CENTERLINE MONUMENT WELL
- BLM RIGHT OF WAY GRANT
- SECTION LINE
- PROPERTY LINE
- CENTERLINE

**BASIS OF BEARINGS AND COORDINATES:**

THE BASIS OF BEARING FOR THIS PROJECT IS THE NEVADA STATE PLANE COORDINATE SYSTEM, WEST ZONE, CARSON CITY MODIFIED (NAD 27).



DOCUMENT NO:

OFFICIAL RECORD OF SURVEY OF  
**ROMANS ROAD**  
A PORTION OF ROMANS ROAD  
LOCATED IN THE SOUTHEAST QUARTER OF SECTION 6,  
TOWNSHIP 14 NORTH, RANGE 20 EAST, M.D.M.

DOUGLAS COUNTY NEVADA

**Manhard CONSULTING LTD**

8950 Double R Blvd., Suite 101, Reno, NV 89521 tel: (775) 748-9500 fax: (775) 748-9520 www.manhard.com  
Civil Engineers - Surveyors - Water Resources Engineers - Water & Wastewater Engineers  
Construction Managers - Environmental Scientists - Landscape Architects - Planners

DRAWN BY: JAM  
DATE: MAR 2011  
PROJ. CODE: MCLDCN  
PROJ. #: 070680

1 SHEET OF 1