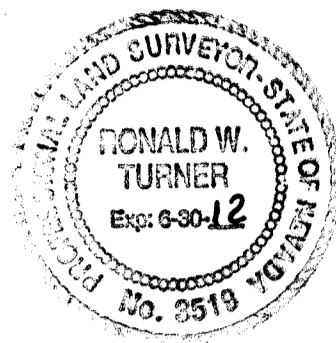


**SURVEYOR'S CERTIFICATE**

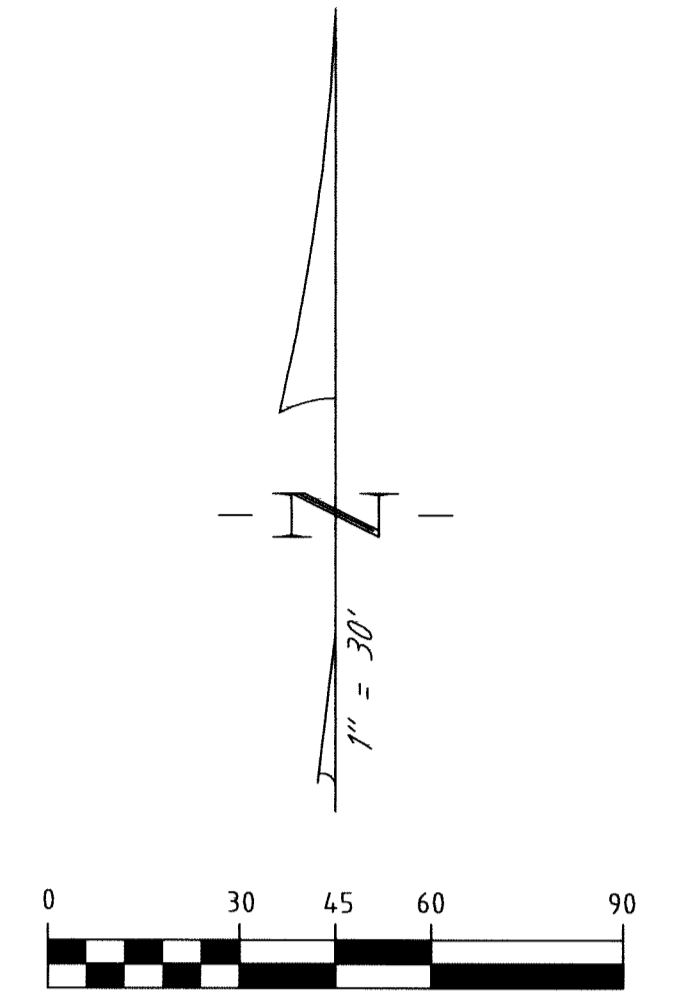
I, RONALD W. TURNER, A PROFESSIONAL LAND SURVEYOR LICENSED IN THE STATE OF NEVADA, CERTIFY THAT:  
 1. THIS IS A TRUE AND ACCURATE REPRESENTATION OF THE LANDS SURVEYED UNDER MY SUPERVISION AT THE INSTANCE OF L. McLaren  
 2. THE LANDS SURVEYED LIE WITHIN A PORTION OF SECTION 10, TOWNSHIP 14 NORTH, RANGE 18 EAST, M.D.M., AND THE SURVEY WAS COMPLETED ON JULY 26, 2011.  
 3. THIS PLAT COMPLIES WITH THE APPLICABLE STATE STATUTES AND ANY LOCAL ORDINANCE AND IS NOT IN CONFLICT WITH THE PROVISIONS FOR N.R.S. 278.010 TO 278.630, INCLUSIVE, AND SECTIONS 2 AND 3 OF CHAPTER 479 OF THE SIXTY-SIXTH LEGISLATIVE SESSION.  
 4. THE MONUMENTS ARE OF THE CHARACTER SHOWN AND OCCUPY THE POSITIONS INDICATED.

Ronald W. Turner Aug. 24, 2011  
 RONALD W. TURNER DATE  
 P.L.S. 3519

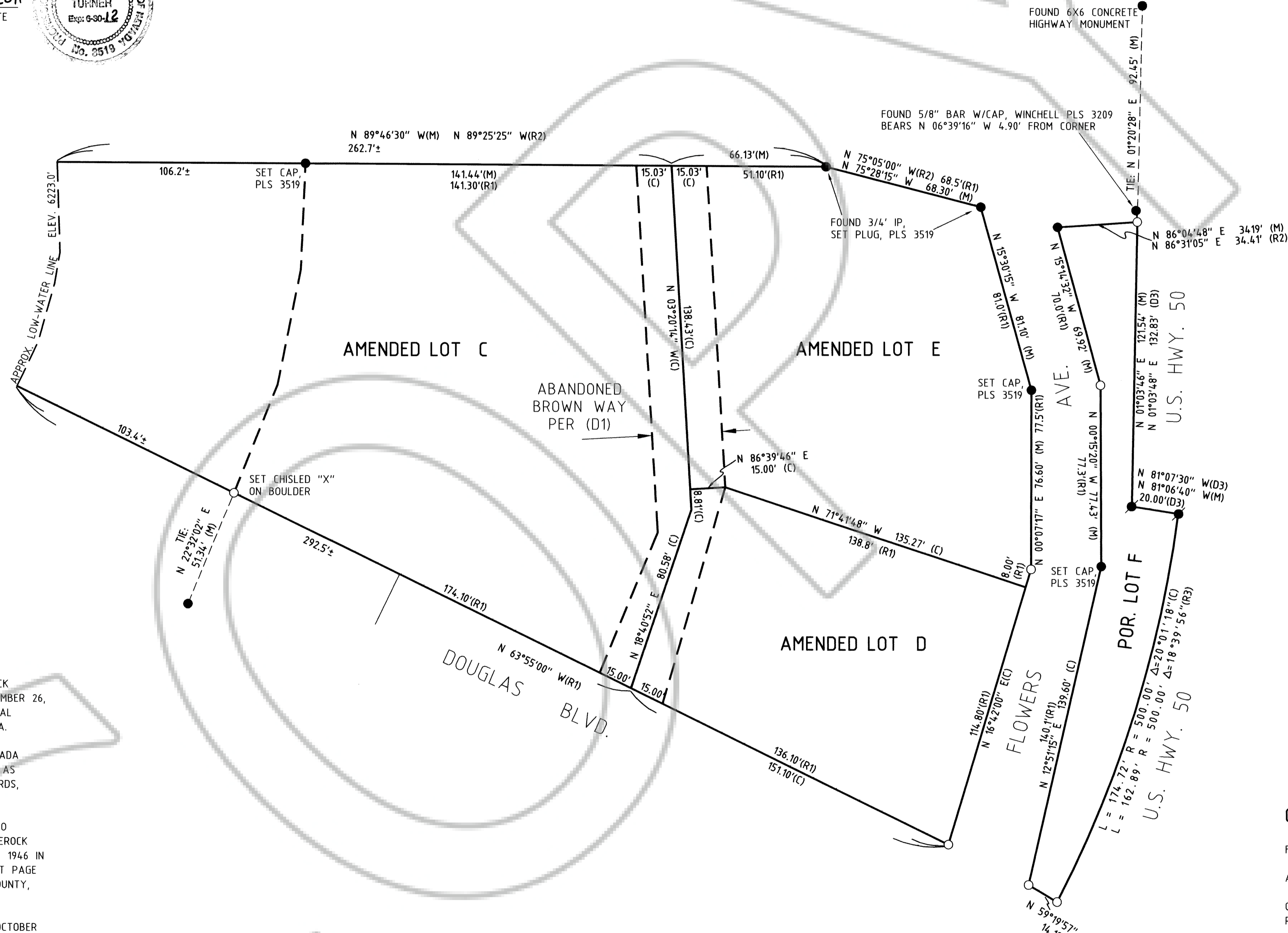


**NRS 321.595**

BOUNDARY BETWEEN BED OF LAKE TAHOE AND ADJACENT LANDS.  
 THE BOUNDARY BETWEEN THE BED OF LAKE TAHOE, OWNED BY THE STATE OF NEVADA IN ITS SOVEREIGN CAPACITY, AND ADJACENT LANDS OWNED BY OTHERS OR BY THE STATE IN ANY OTHER CAPACITY, IS ESTABLISHED AS A LINE WHOSE ELEVATION IS 6,223 FEET, LAKE TAHOE DATUM.  
 (ADDED TO NRS BY 1977, 1124; A 1979, 283)



LAKE TAHOE



**LAND AREA - SQ.FT.**

AMENDED LOT C	44,765
AMENDED LOT D	15,429
AMENDED LOT E	21,594
PORTION LOT F	6,807
<b>TOTAL</b>	<b>88,595</b>

**REFERENCES**

- (R1) MAP OF SUBDIVISION NO.1 CAVE ROCK COVE, LTD. TRACT RECORDED SEPTEMBER 26, 1936 AS DOCUMENT NO. 3331, OFFICIAL RECORDS, DOUGLAS COUNTY, NEVADA.
- (R2) RECORD OF SURVEY FOR THE GRANADA INC., RECORDED SEPTEMBER 13 1993 AS DOCUMENT NO. 31737 OFFICIAL RECORDS, DOUGLAS COUNTY NEVADA.
- (D1) IN THE MATTER OF THE PETITION TO ABANDON CERTAIN STREETS IN CAVEROCK COVE LTD. RECORDED FEBRUARY 27, 1946 IN BOOK D MISCELLANEOUS RECORDS AT PAGE 321, OFFICIAL RECORDS, DOUGLAS COUNTY, NEVADA.
- (D2) TRUST TRANSFER DEED RECORDED OCTOBER 9, 2000 AS DOCUMENT NUMBER 500993, OFFICIAL RECORDS, DOUGLAS COUNTY, NEVADA.
- (D3) DEED-PUBLIC HIGHWAY RECORDED JANUARY 18, 1952 IN BOOK A-1 AT PAGE 79, OFFICIAL RECORDS, DOUGLAS COUNTY, NEVADA.

**LEGEND**

- FOUND 1/2" BAR, OR AS NOTED
- FOUND 4X4 WOOD RIGHT-OF-WAY POST
- SET 3/4" CIP WITH PLUG "PLS 3519" UNLESS OTHERWISE NOTED
- ┌ NOTHING FOUND OR SET
- (M) MEASURED
- (C) CALCULATED
- (R1) AS PER REFERENCES THIS MAP
- (R2) AS PER REFERENCES THIS MAP

**NOTE**

THIS MAP IS BEING FILED TO DELINEATE ADJUSTED PROPERTY LINES AS DESCRIBED IN DEEDS RECORDED IN THE OFFICIAL RECORDS OF DOUGLAS COUNTY, NEVADA.

**BASIS OF BEARING**

THE MERIDIAN OF THIS SURVEY IS IDENTICAL WITH THAT MAP OF SUBDIVISION NO.1 CAVE ROCK COVE, LTD. TRACT RECORDED SEPTEMBER 26, 1936 AS DOCUMENT NO. 3331

A.P.N. 1418-27-210-003

**COUNTY RECORDER'S STATEMENT**

FILED FOR RECORD THIS 24<sup>th</sup> DAY OF August, 2011  
 AT 24 MINUTES PAST 11 O'CLOCK A.M., IN BOOK 0811 OF  
 OFFICIAL RECORDS AT PAGE 4570, DOCUMENT NUMBER 788513  
 RECORDED AT THE REQUEST OF Turner & Associates  
Karen S. Ellison  
 DOUGLAS COUNTY RECORDER

SCALE: 1"=30' SHEET 1 OF 1

**TURNER & ASSOCIATES, INC.**  
 LAND SURVEYING  
 (775) 588-5658  
 FAX (775) 588-9296  
 308 DORLA COURT, SUITE 203 - ROUND HILL, NEVADA 89448  
 P.O. BOX 5067 - STATELINE, NEVADA 89449

**RECORD OF SURVEY**  
 FOR  
**LESLIE MCLAREN**  
 PORTION OF SECTION 27, T.14N., R.18E., M.D.M.  
 DOUGLAS COUNTY, NEVADA  
 FILE NO. 10124R051.DWG AUGUST 2011