

26

25

30

29

35

36

31

32

LION 454	LION 455	LION 456	LION 457	LION 458	LION 459	LION 460
----------	----------	----------	----------	----------	----------	----------

T14N R23E

T14N R24E

T13N R23E

T13N R24E

LION 461

LION 462

The Southwest corner of LION 462 is
1,969 feet South and 545 feet East of
Northwest corner of Section 6,
T13N R24E (UTM Grid)

2

1

6

5

11

12

7

8

DOC # 0794848
12/27/2011 03:02 PM Deputy: SG
OFFICIAL RECORD
Requested By:
PILOT GOLD USA INC

Douglas County - NV
Karen Ellison - Recorder
Page: 1 of 1 Fee: 139.00
BK-1211 PG-5563 RPTT: 0.00

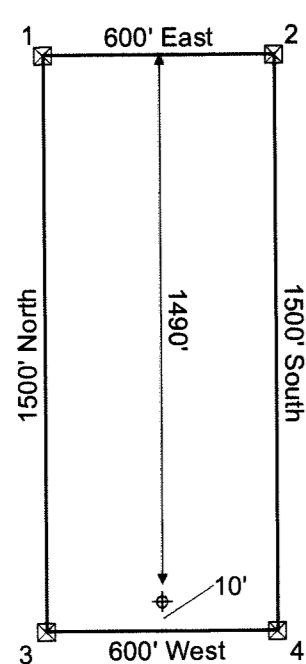


**LION 454-462
Lode Mining Claims**

Section 6, Township 13 North, Range 24 East
Section 36, Township 14 North, Range 23 East
Section 31, Township 14 North, Range 24 East
Mt. Diablo Base Line and Meridian

Douglas County, Nevada

Typical Claim



Location Dates
LION lode claims 454-462 were located on Oct. 14, 2011

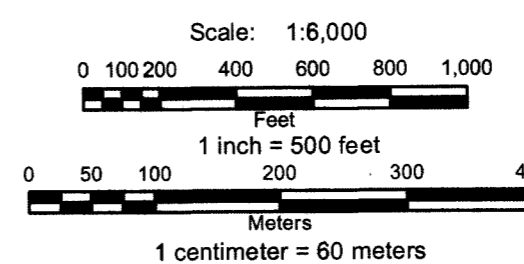
Location Monuments
Location monument is set 10 feet from endline.

Notes:
All location monuments are 2"x2"x4' wooden posts with scribed metal tags.
All claims are 600'x1500'.

Locator:
Pilot Gold (USA) Inc.
1031 Railroad St., Suite 110
Elko, NV 89801

Legend

- ◆ Location Monuments
- Claims
- - - Tie line
- Sections (BLM GCDB)
- Townships
- ◇ Section corner



UTM Zone 11, NAD 1983