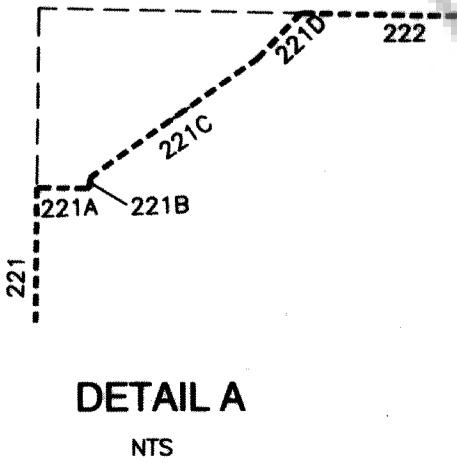


NOTE: THE PARCEL INFORMATION ON THIS MAP IS CURRENT AS OF MARCH 2013.



SURVEYOR'S CERTIFICATE
 I, Bruce R. Scott, Town of Minden Engineer, do certify:
 1. This map does not represent an actual survey but has been compiled from existing record information and Douglas County GIS records, and is in compliance with Title 18, Appendix "B" entitled "Minden Town Boundary."
 2. This map was presented to and approved by the Douglas County Board of Commissioners on the 26th day of May, 2013.

Bruce R. Scott
 Bruce R. Scott, PLS 3579
 Nevada State Professional Engineer
 No. 3579

LEGEND
 Parcels Being Annexed to Town of Minden per This Map
 101 Legal Description Call Number. Corresponding Legal Description
 --- Town Boundary Minden only
 ① Reference Number for Annexation Application to Douglas County

TOWN OF MINDEN CERTIFICATE
 I, Charles Condron, Chairman of the Minden Town Board, certify that this map represents the Town of Minden Boundary, and the annexation shown hereon have been approved by the Town of Minden.
Charles Condron
 Charles Condron, Chairman
 Minden Town Board

RECORD OF SURVEY TO SUPPORT BOUNDARY LINE ADJUSTMENT FOR MACKLAND CATTLE COMPANY ET AL. RECORDED JUN 29, 2009 IN BOOK 608, PAGE 9130 DOCUMENT NO. 746235

ANNEXATION APPROVED APRIL 3, 2013 FOR TOWN OF MINDEN APN 1320-20-000-019 1.08 ACRES, 46,859± SF

ANNEXATION APPROVED FEBRUARY 6, 2013 FOR DOUGLAS COUNTY A PORTION OF APN 1320-29-301-007 27.90 ACRES

ANNEXATION APPROVED MARCH 6, 2013 FOR GPEG I LLC A PORTION OF APN 1320-29-401-018 12.82 ACRES

ANNEXATION APPROVED FEBRUARY 6, 2013 FOR DOUGLAS COUNTY APN 1320-29-402-014 11.21 ACRES

Scale: 1"=400'

RECORDER'S CERTIFICATE
 Filed this 15 day of May, 2013, at 36 minutes past 11 o'clock in Book 513, Page 3840, Document Number 823602, recorded at the request of the Town of Minden.
Shaunnae Heron, Deputy
 Douglas County Recorder

Town of Minden Boundary Map April 2013

LOCATED WITHIN PORTIONS OF SECTIONS 29, 30, 31, AND 32, T.13 N, R.20 E. AND SECTION 25, T.13 N., R.19 E., M.D.B.&M. DOUGLAS COUNTY, NEVADA

Engineering • Surveying • Water Rights Resources & Environmental Services
 www.rdi-nv.com



REVISION	DATE	DESCRIPTION
2013 NEW ANNEX.	3/7/13	
JOB NO.	13-004.2	
DATE	4/16/13	
DRAWN:	MLM	
CHECKED:	LT	
SHEET	1 OF 1	