

BASIS OF BEARINGS

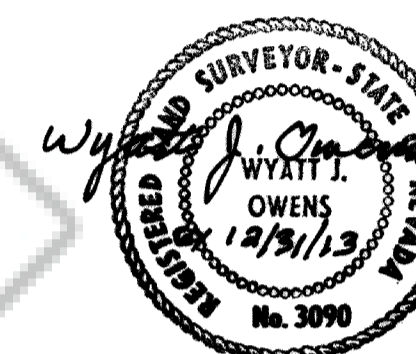
THE BASIS OF BEARINGS OF THIS MAP IS A LINE BETWEEN THE SOUTHEASTERLY CORNER OF PARCEL #1 OF PARCEL MAP, DOCUMENT #076833 AND THE PROPERTY CORNER ON THE NORTH RIGHT-OF-WAY LINE OF AUTUMN HILLS DRIVE AT THE INTERSECTION WITH FOOTHILL ROAD FOR PARCEL 4 OF PARCEL MAP, DOCUMENT #002124, OFFICIAL RECORDS, DOUGLAS COUNTY, NEVADA. SAID LINE BEARS N89°57'E.

LEGEND

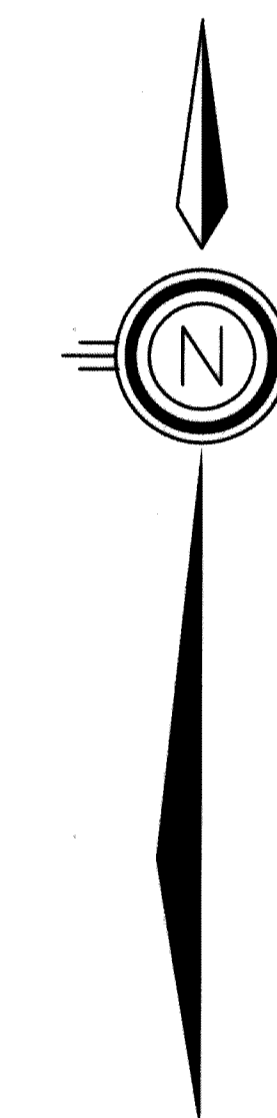
- SET 5/8" REBAR WITH PLASTIC CAP STAMPED PLS 3090.
- (D) DEED, DOCUMENT #825029, OFFICIAL RECORDS, DOUGLAS COUNTY, NEVADA.
- (R) PARCEL MAP, DOCUMENT #002124, OFFICIAL RECORDS, DOUGLAS COUNTY, NEVADA.
- (R1) PARCEL MAP, DOCUMENT #076833, OFFICIAL RECORDS, DOUGLAS COUNTY, NEVADA.
- (P) PROPORTIONED DISTANCE.
- SET NAIL AND TAG STAMPED PLS 3090 IN PAVEMENT.

SURVEYOR'S CERTIFICATE

- I, WYATT J. OWENS, A PROFESSIONAL LAND SURVEYOR REGISTERED IN THE STATE OF NEVADA, HEREBY STATE THAT:
- 1) I HAVE PERFORMED A FIELD SURVEY SUFFICIENT TO LOCATE AND IDENTIFY THE PROPERTY LINES OF A.P.N. 1219-03-002-045 AT THE INSTANCE OF MICHELE CHASE.
 - 2) ALL CORNERS HAVE BEEN SET AND THE MONUMENTS ARE OF THE CHARACTER SHOWN AND OCCUPY THE POSITIONS INDICATED AND ARE OF SUFFICIENT NUMBER AND DURABILITY TO ENABLE THE SURVEY TO BE RETRACED.
 - 3) THIS MAP IS NOT IN CONFLICT WITH THE PROVISIONS OF NRS 278.010 TO 278.630, INCLUSIVE AND COMPLIES WITH ALL APPLICABLE STATE STATUTES AND LOCAL ORDINANCES.
 - 4) THE LANDS SURVEYED LIE WITHIN THE SW1/4 OF SECTION 3, T. 12 N., R. 19 E., M.D.B.&M. AND THE SURVEY WAS COMPLETED ON AUGUST 22, 2013.
 - 5) THIS PLAT IS A TRUE AND ACCURATE REPRESENTATION OF THE LANDS SURVEYED.

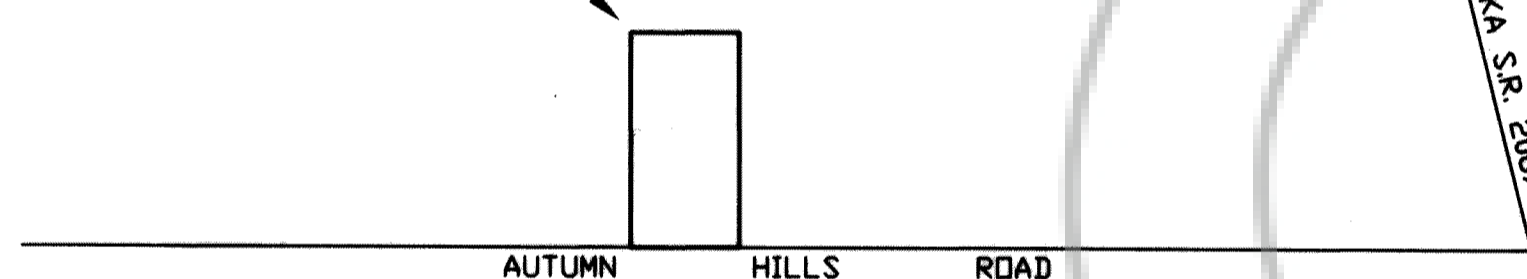


Wyatt J. Owens
WYATT J. OWENS, PLS 3090.



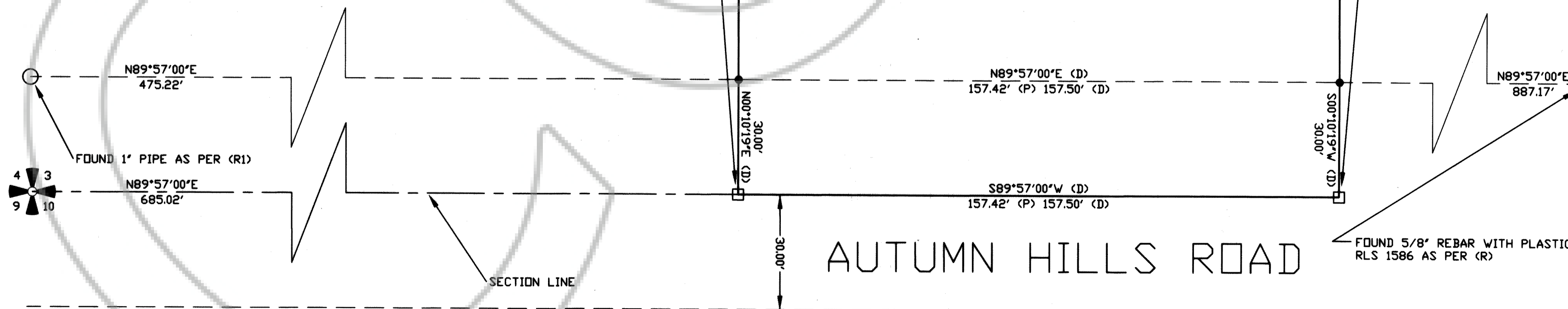
SCALE: 1" = 20'

LOCATION



VICINITY MAP

NOT TO SCALE



RECORDER'S CERTIFICATE

FILED FOR RECORD THIS 29 DAY OF August 2013, AT 8 MINUTES PAST 9 O'CLOCK A.M. IN BOOK DB13 OF OFFICIAL RECORDS PAGE 7801, DOCUMENT NUMBER 829701 RECORDED AT THE REQUEST OF WYATT J. OWENS.

Shawnae Lane
DOUGLAS COUNTY RECORDER

SHEET 1 OF 1

RECORD OF SURVEY FOR
THOMAS GULBRANSON AND
MICHELE CHASE
OF A.P.N. 1219-03-002-045
WITHIN THE S1/2 OF SECTION 3, T. 12 N., R. 19 E., M.D.B. & M.,
OFFICIAL RECORDS, DOUGLAS COUNTY, NEVADA