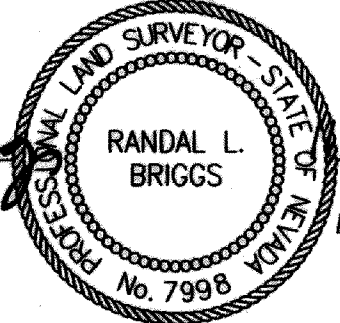


**SURVEYOR'S CERTIFICATE**

I, RANDAL L. BRIGGS, A PROFESSIONAL LAND SURVEYOR LICENSED IN THE STATE OF NEVADA, CERTIFY THAT:

- 1) THIS PLAT REPRESENTS THE RESULTS OF A SURVEY CONDUCTED UNDER MY DIRECT SUPERVISION AT THE INSTANCE OF CCT FOUNDERS.
- 2) THE LAND SURVEYED LIES WITHIN SECTIONS 13, 23, 24, 25 & 26 T.10N., R. 22 AND SECTIONS 17, 18, 19, 20 & 31 T.10N., R. 23 E. M.D.M., DOUGLAS COUNTY, AND THE SURVEY WAS COMPLETED ON MAY 5, 2013.
- 3) THIS PLAT COMPLIES WITH THE APPLICABLE STATUTES OF THIS STATE AND ANY LOCAL ORDINANCES IN EFFECT ON THE DATE THAT THE SURVEY WAS COMPLETED, AND THE SURVEY WAS CONDUCTED IN ACCORDANCE WITH CHAPTER 625 OF THE NEVADA ADMINISTRATIVE CODE.
- 4) THE MONUMENTS DEPICTED ON THE PLAT ARE OF THE CHARACTER SHOWN, OCCUPY THE POSITIONS INDICATED AND ARE OF SUFFICIENT DURABILITY.

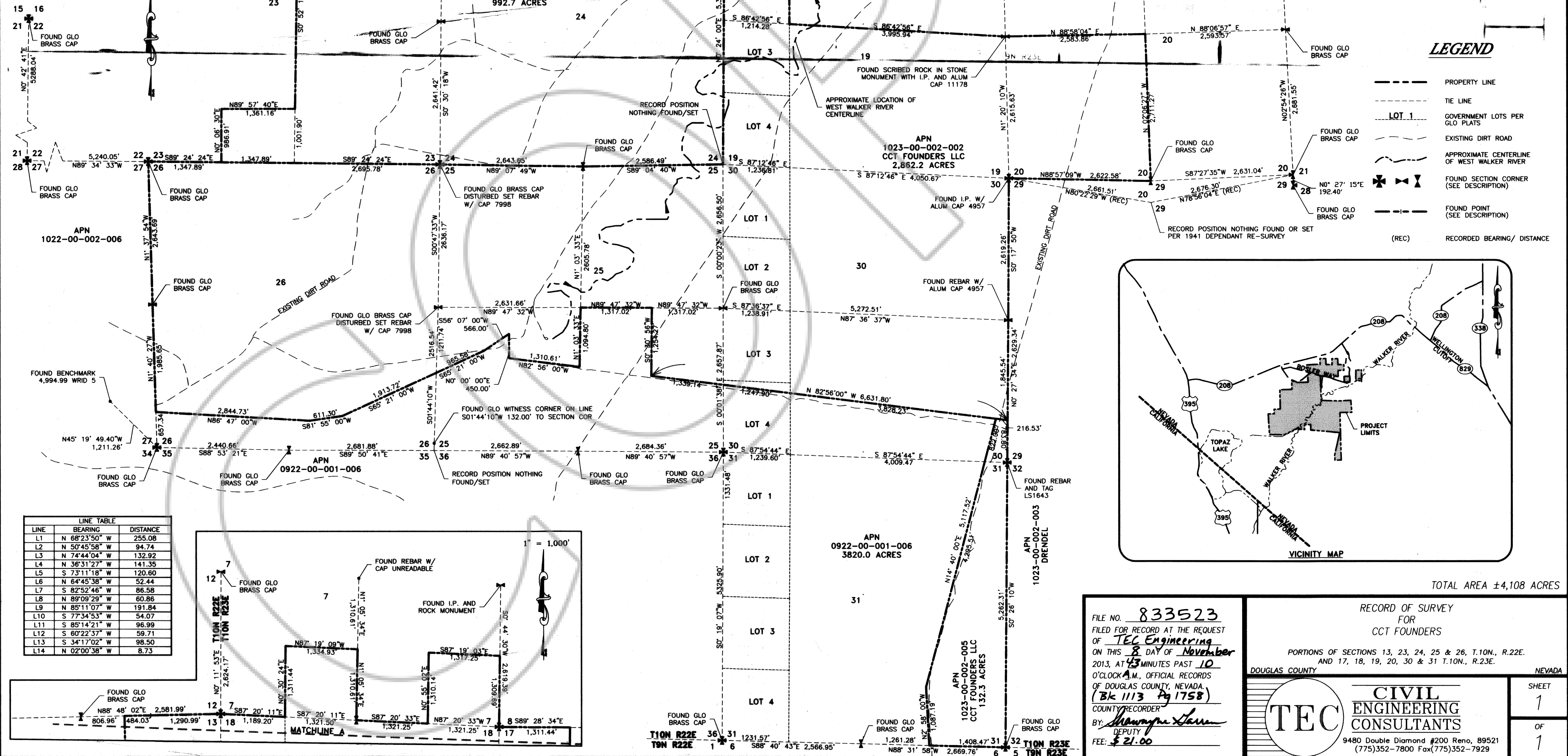
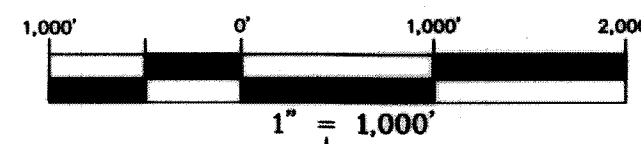
*Randal L. Briggs*  
RANDAL L. BRIGGS, P.L.S. 7998



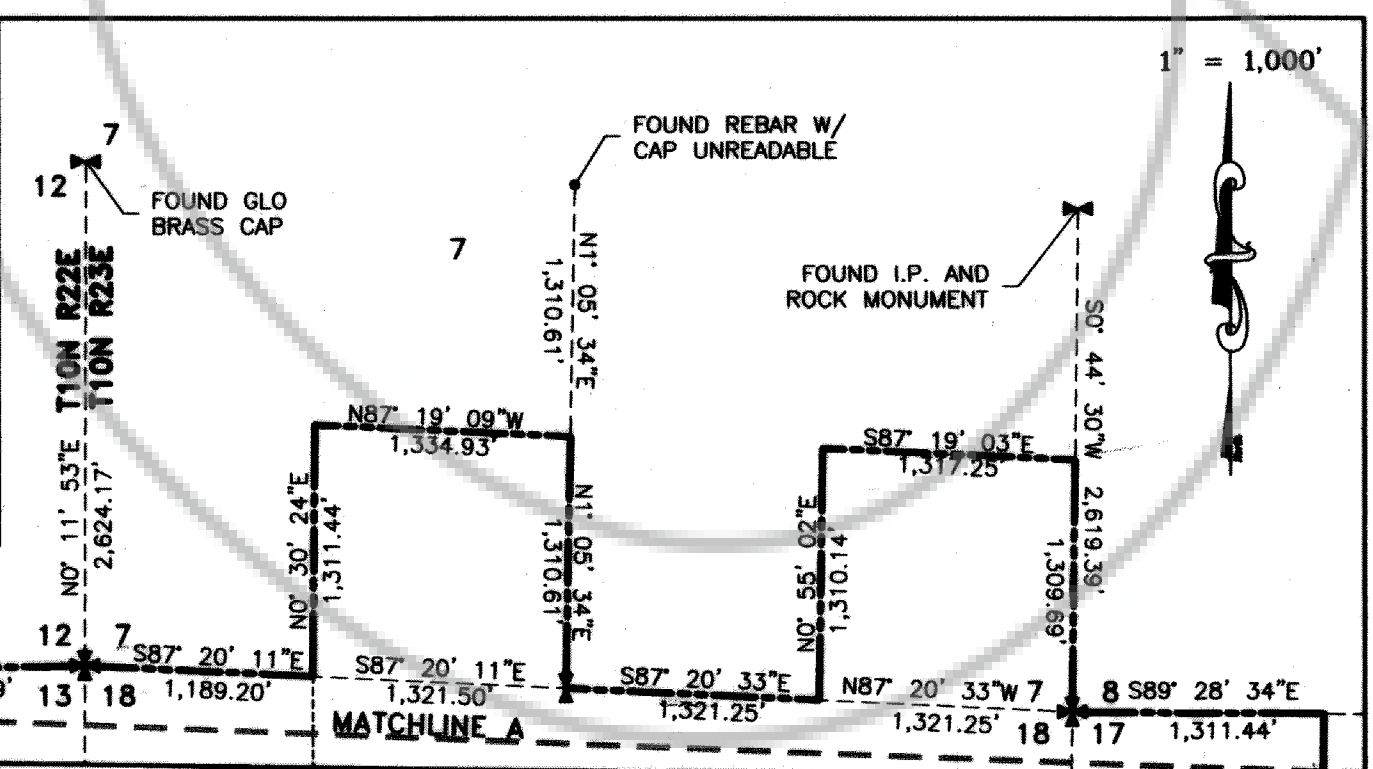
10/1/13  
DATE  
EXP. 12/31/14

**REFERENCE DOCUMENTS**

1. GLO 1887 CADASTRAL PLAT # 0284
2. GLO 1949 CADASTRAL PLAT # 0284-A
3. GLO 1887 CADASTRAL PLAT # 0340
4. GLO 1948 CADASTRAL PLAT # 0340-A
5. DIVISION OF LAND INTO LARGE PARCELS MAP # 688553
6. PARCEL MAP DOC # 037256
7. RECORD OF SURVEY DOC # 019787
8. RECORD OF SURVEY DOC # 033203
9. RECORD OF SURVEY DOC # 418727

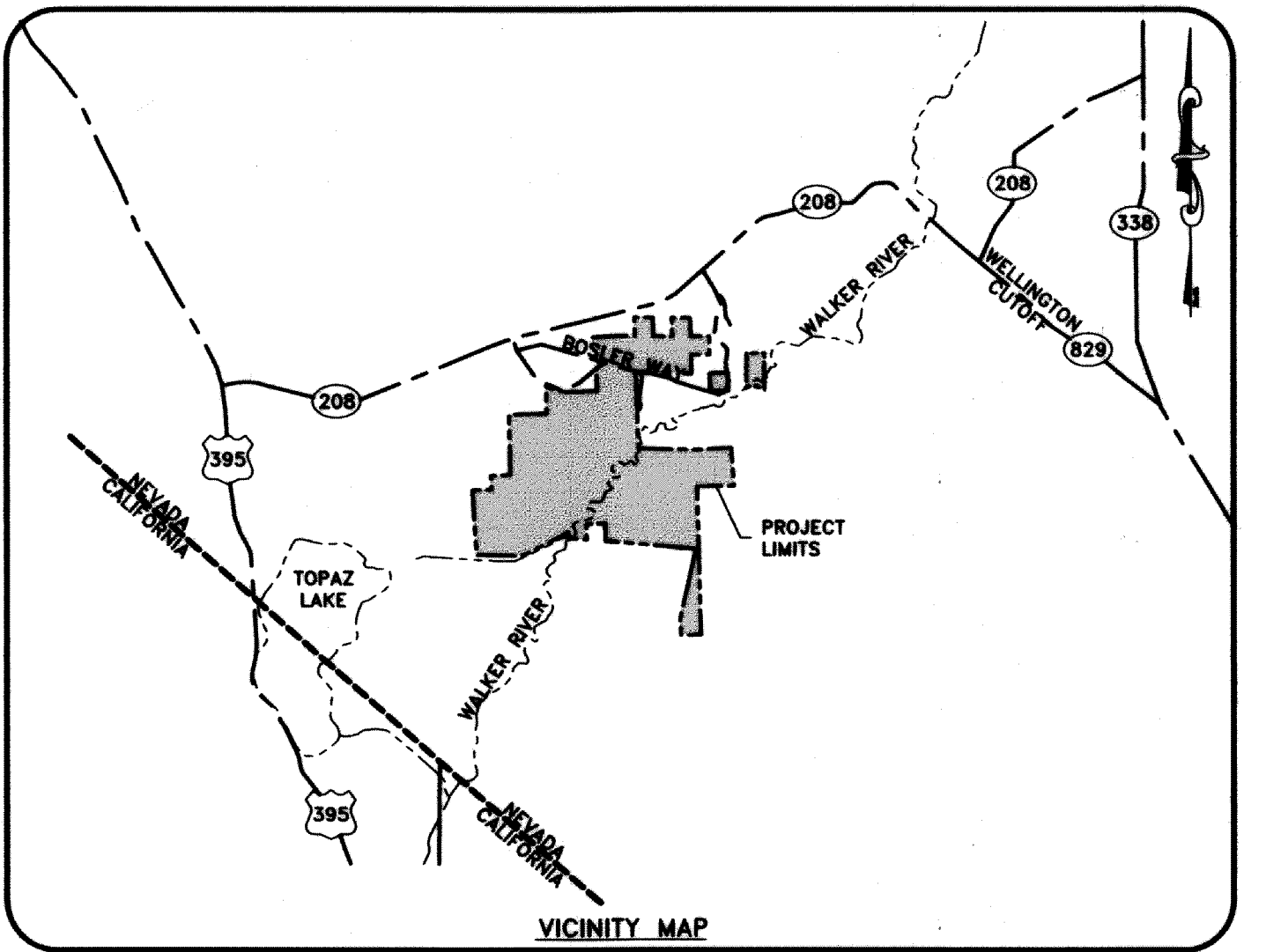


LINE	BEARING	DISTANCE
L1	N 68°23'50" W	255.08
L2	N 50°45'58" W	94.74
L3	N 74°44'04" W	132.92
L4	N 36°31'27" W	141.35
L5	S 73°11'18" W	120.60
L6	N 64°45'38" W	52.44
L7	S 82°52'46" W	86.58
L8	N 89°09'29" W	60.86
L9	N 85°11'07" W	191.84
L10	S 77°34'53" W	54.07
L11	S 85°14'21" W	96.99
L12	S 60°22'37" W	59.71
L13	S 34°17'02" W	98.50
L14	N 02°00'38" W	8.73



**BASIS OF BEARING**  
THE BASIS OF BEARINGS AND COORDINATES FOR THIS SURVEY IS THE FOLLOWING NEVADA COORDINATE SYSTEM, WEST ZONE, VALUES BASED ON THE NORTH AMERICAN DATUM OF 1983/1994 HIGH ACCURACY REFERENCE NETWORK (NAD 83/94-HARN).  
THE GROUND COORDINATES ARE MODIFIED GRID. MULTIPLY GRID COORDINATES BY THE COMBINED FACTOR OF 1.000262369 TO OBTAIN GROUND COORDINATES.  
ALL DISTANCES AND COORDINATES SHOWN ON MAP ARE GROUND.

- LEGEND**
- PROPERTY LINE
  - TIE LINE
  - LOT 1
  - GOVERNMENT LOTS PER GLO PLATS
  - EXISTING DIRT ROAD
  - APPROXIMATE CENTERLINE OF WEST WALKER RIVER
  - FOUND SECTION CORNER (SEE DESCRIPTION)
  - FOUND POINT (SEE DESCRIPTION)
  - RECORDED BEARING/DISTANCE (REC)



TOTAL AREA ±4,108 ACRES

FILE NO. **833523**  
FILED FOR RECORD AT THE REQUEST OF **TEC Engineering**  
ON THIS **8** DAY OF **November**  
2013, AT **4:30** MINUTES PAST **10**  
O'CLOCK A.M., OFFICIAL RECORDS  
OF DOUGLAS COUNTY, NEVADA  
(Bk 1113 Pg 1758)  
COUNTY RECORDER  
BY: *Monique Lamm*  
DEPUTY  
FEE: \$21.00

RECORD OF SURVEY FOR CCT FOUNDERS  
PORTIONS OF SECTIONS 13, 23, 24, 25 & 26, T.10N., R.22E. AND 17, 18, 19, 20, 30 & 31 T.10N., R.23E.  
DOUGLAS COUNTY NEVADA

**TEC CIVIL ENGINEERING CONSULTANTS**  
9480 Double Diamond #200 Reno, 89521  
(775)352-7800 Fax (775)352-7929

SHEET 1 OF 1