

15-

Doc Number: **0836449**

01/08/2014 11:02 AM

OFFICIAL RECORDS

Requested By
BRIAN C HANSEN

Corner Record – Douglas County, Nevada

DOUGLAS COUNTY RECORDERS
Karen Ellison - Recorder

When recorded, return a copy to:

Page: 1 of 2 Fee: \$ 15.00
Bk: 0114 Pg: 1081

- ✓ USFS, LTBMU, Lands Dept.
35 College Dr.
South Lake Tahoe, CA 96150



Surveyor's Certificate

I, Mary Niederberger-Lee, a Professional Land Surveyor registered in the state of Nevada, certify that:

1. This corner record represents the establishment of restoration of a corner or accessory to a corner conducted under my direct supervision.
2. The monument or accessories perpetuated lie within the section and township/range printed on the map, and the establishment or restoration was completed on the date printed on the map.
3. This corner record has been filed pursuant to NRS 329.140 or 329.150 and complies with the provision of NAC 329.101 and any local ordinances in effect on the date the establishment or restoration was completed
4. The monument or witness monument and accessories found are of the character shown, occupy the positions indicated and are of sufficient durability.



Exp. 12/31/13

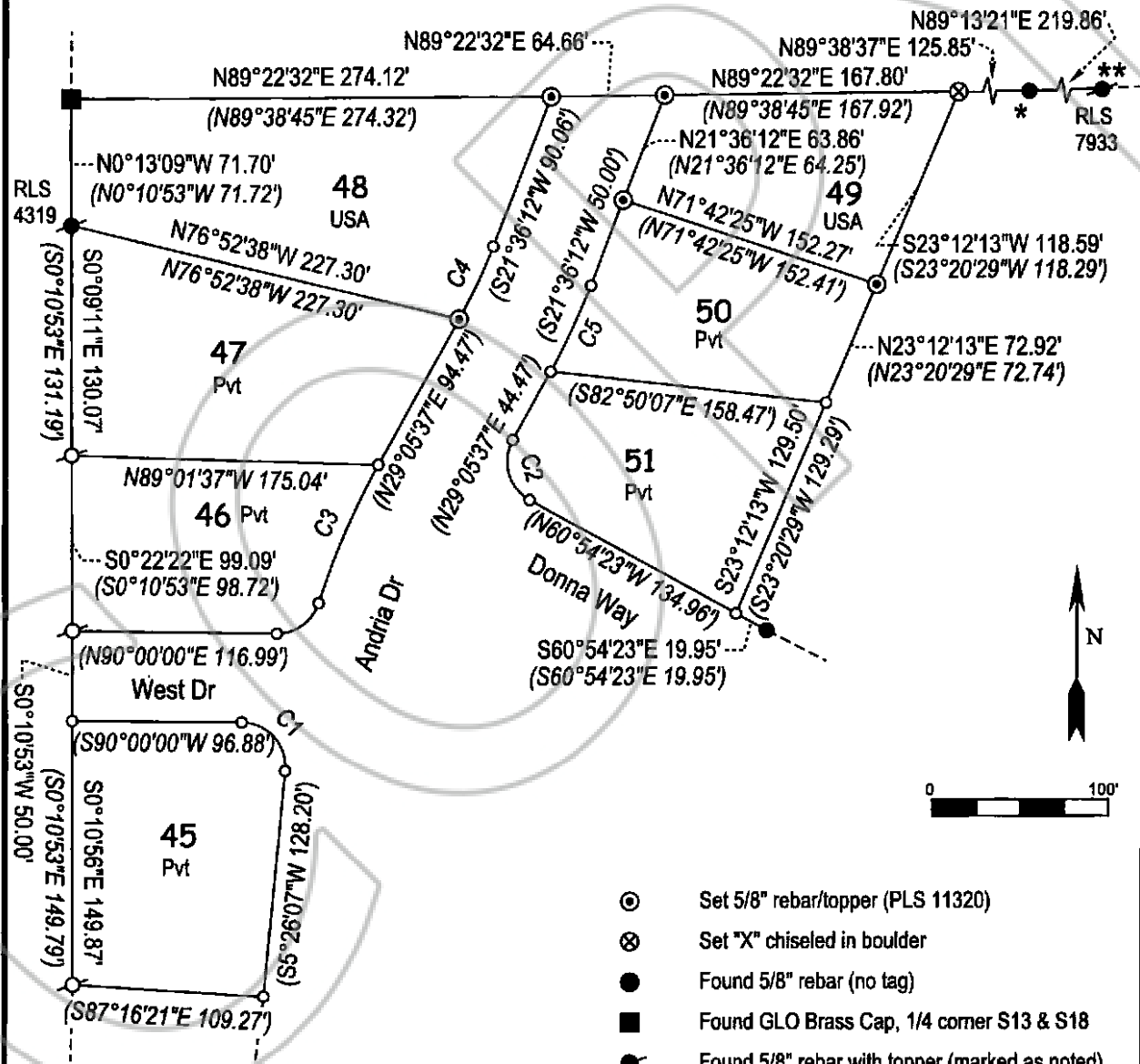
Mary Niederberger-Lee, PLS 11320

Mary Niederberger-Lee
Date Signed 1/10/12

Corner Record APN: 1319-18-310-001, -041 Andria Dr	Date of Survey: June 27, 2008
Lots 48 & 49 Kingsbury Village #1 Amd. (#22952) S18 T13N R19E M.D.M.	Filed as required by the Statues of Nevada, 1969, Chapter 329

CURVE	BEARING	HORIZ DIST	RADIUS
C1	S42°16'50"E	36.991'	25.000'
C2	N15°54'23"W	35.355'	25.000'
C3	N23°23'20"E	85.359'	430.000'
C4	S25°20'50"W	45.707'	350.000'
C5	S25°20'50"W	53.542'	410.000'

* NW cor. of lot 13
** NW cor. of lot 12
of Kingsbury Village
Unit #4



Basis of Bearings: rotated to record between the NW cor. of lot 48 and the SW cor. of lot 45. Centerline monuments of roadways were searched for but not found.

- ⊙ Set 5/8" rebar/topper (PLS 11320)
- ⊗ Set "X" chiseled in boulder
- Found 5/8" rebar (no tag)
- Found GLO Brass Cap, 1/4 corner S13 & S18
- Found 5/8" rebar with topper (marked as noted)
- Found 3/4" plugged pipe (PLS 3519)
- nothing found, nothing set
- () record bearing and distance from sub'd map