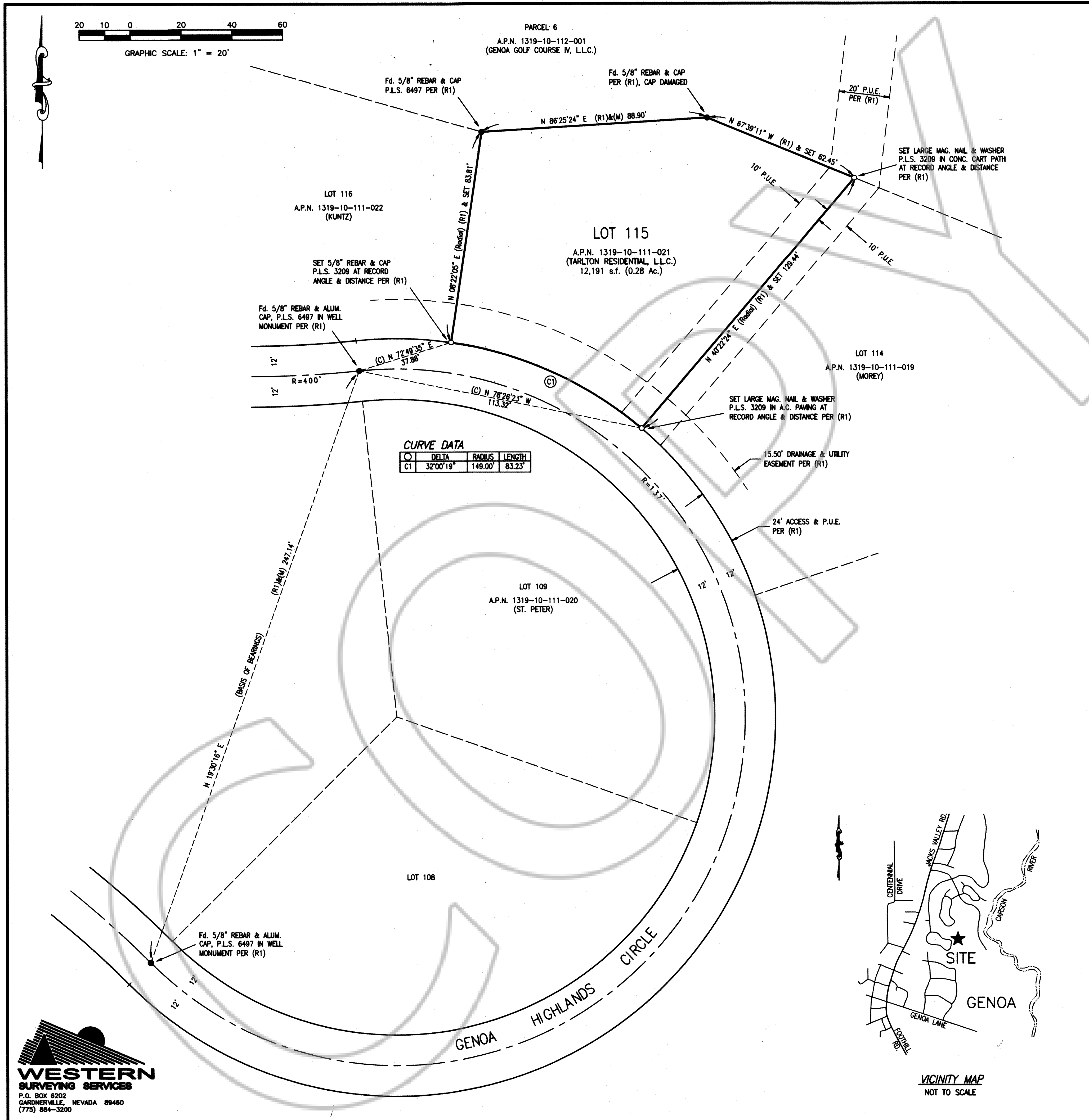




GRAPHIC SCALE: 1" = 20'



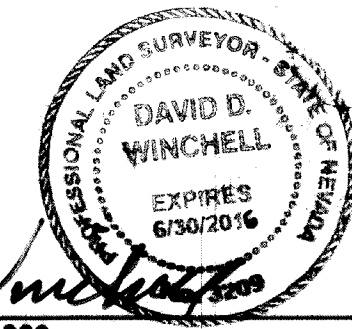
CURVE DATA

Δ	DELTA	RADIUS	LENGTH
C1	32°00'19"	149.00'	83.23'

SURVEYOR'S CERTIFICATE:

I, DAVID D. WINCHELL, A PROFESSIONAL LAND SURVEYOR IN THE STATE OF NEVADA, CERTIFY THAT:

- THIS PLAT REPRESENTS A SURVEY CONDUCTED UNDER MY DIRECT SUPERVISION AT THE INSTANCE OF JOHN & SANDRA TIMMONS. THE FIELD SURVEY IS SUFFICIENT TO LOCATE AND IDENTIFY PROPERLY THE SUBJECT BOUNDARY LINES.
- THE LANDS SURVEYED LIE WITHIN A PORTION OF THE NORTHEAST 1/4 OF THE NORTHWEST 1/4 OF SECTION 10, TOWNSHIP 13 NORTH, RANGE 19 EAST, M.D.B.&M., AND THE SURVEY WAS COMPLETED ON DECEMBER 1, 2015.
- ALL CORNERS AND ANGLE POINTS OF THE RECORD OF SURVEY HAVE BEEN DEFINED BY MONUMENTS AS REQUIRED BY N.R.S. 625.340.
- THIS MAP IS NOT IN CONFLICT WITH THE PROVISIONS OF N.R.S. 278.010 TO 278.630, INCLUSIVE.



David D. Winchell
 DAVID D. WINCHELL, P.L.S. 3209
 12/18/15
 DATE

LEGEND:

- (R1) REFERENCE TO EXISTING RECORDED DOCUMENT
- (M) MEASURED DISTANCES AND BEARINGS
- (C) CALCULATED DISTANCE AND BEARING
- P.U.E. PUBLIC UTILITY EASEMENT
- Fd. MONUMENT AS NOTED
- SET MONUMENT AS NOTED
- R=137' RADIUS OF CURVE SHOWN

REFERENCE DOCUMENT:

(R1) FINAL MAP FOR GENOA LAKES SUBDIVISION PHASE 3, UNIT 2, RECORDED IN BOOK 595, PAGE 78, DOCUMENT No. 361251, OFFICIAL RECORDS OF DOUGLAS COUNTY

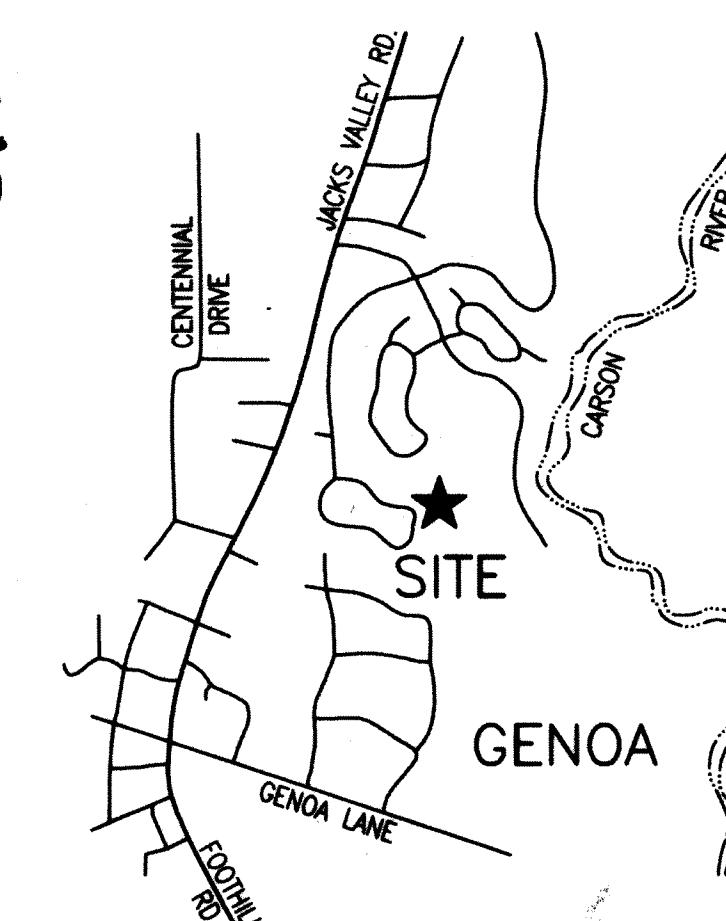
BASIS OF BEARINGS:

THE BEARING N 19°30'16" E, WHICH WAS COMPUTED BETWEEN THE STREET CENTERLINE MONUMENTS IN FRONT OF LOT 116 AND LOT 106, USING RECORD DATA PER THE FINAL MAP FOR GENOA LAKES SUBDIVISION PHASE 3, UNIT 2, RECORDED IN BOOK 595, PAGE 78, DOCUMENT No. 361251, OFFICIAL RECORDS OF DOUGLAS COUNTY, WAS USED AS THE BASIS OF BEARINGS FOR THIS MAP.

COUNTY RECORDER'S CERTIFICATE:

FILED THIS 18th DAY OF December, 2015, AT 34 MINUTES
 PAST 4 O'CLOCK P.M., AS DOCUMENT NUMBER 2015-874283
 RECORDED AT THE REQUEST OF *Dave Winchell*

Shawnae Stover, Deputy
 DOUGLAS COUNTY RECORDER



RECORD OF SURVEY
 FOR
JOHN & SANDRA TIMMONS
 BEING A PORTION OF THE NORTHEAST 1/4 OF THE NORTHWEST 1/4 OF SECTION 10, TOWNSHIP 13 NORTH, RANGE 19 EAST, M.D.B.&M.
 ALSO BEING A SURVEY OF LOT 115, FINAL MAP FOR GENOA LAKES PHASE 3, UNIT 2, RECORDED IN BOOK 595, PAGE 78, DOCUMENT No. 361251, OFFICIAL RECORDS OF DOUGLAS COUNTY.
 DOUGLAS COUNTY NEVADA
 SHEET 1 OF 1 SHEET