

Corner Record - Douglas County, Nevada



00030052201608764360020020

KAREN ELLISON, RECORDER

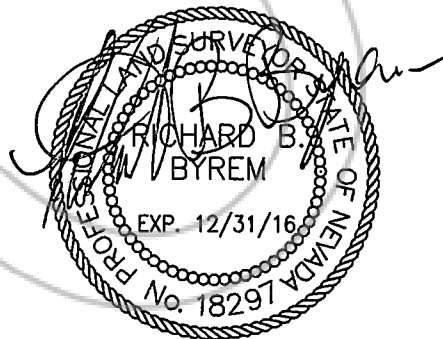
When recorded return a copy to:

Resource Concepts, Inc.
P.O. Box 11796
Zephyr Cove, NV 89448

Surveyor's Certificate

I, Richard B. Byrem, a Professional Land Surveyor registered in the State of Nevada, certify that:

1. This corner record represents the establishment or restoration of a corner or accessory to a corner conducted under my direct supervision.
2. The monument or accessories perpetuated lie within Section 9, Township 12 North, Range 19 East, and the establishment or restoration was completed on April 1, 2015.
3. This corner record has been filed pursuant to NRS 329.140 or 329.150 and complies with the provisions of NAC 329.101 and any local ordinances in effect on the date that the establishment or restoration was completed.
4. The monument or witness monument and accessories found are of the character shown, occupy the positions indicated and are of sufficient durability.



Expiration date: 12/31/16
Richard B. Byrem, P.L.S. 18297

Feb 4, 2016

Date Signed

Corner Record
 APN: 1219-09-001-030
 Ellis Ln

Date of Survey:
 April 1, 2015

Page 2 of 2

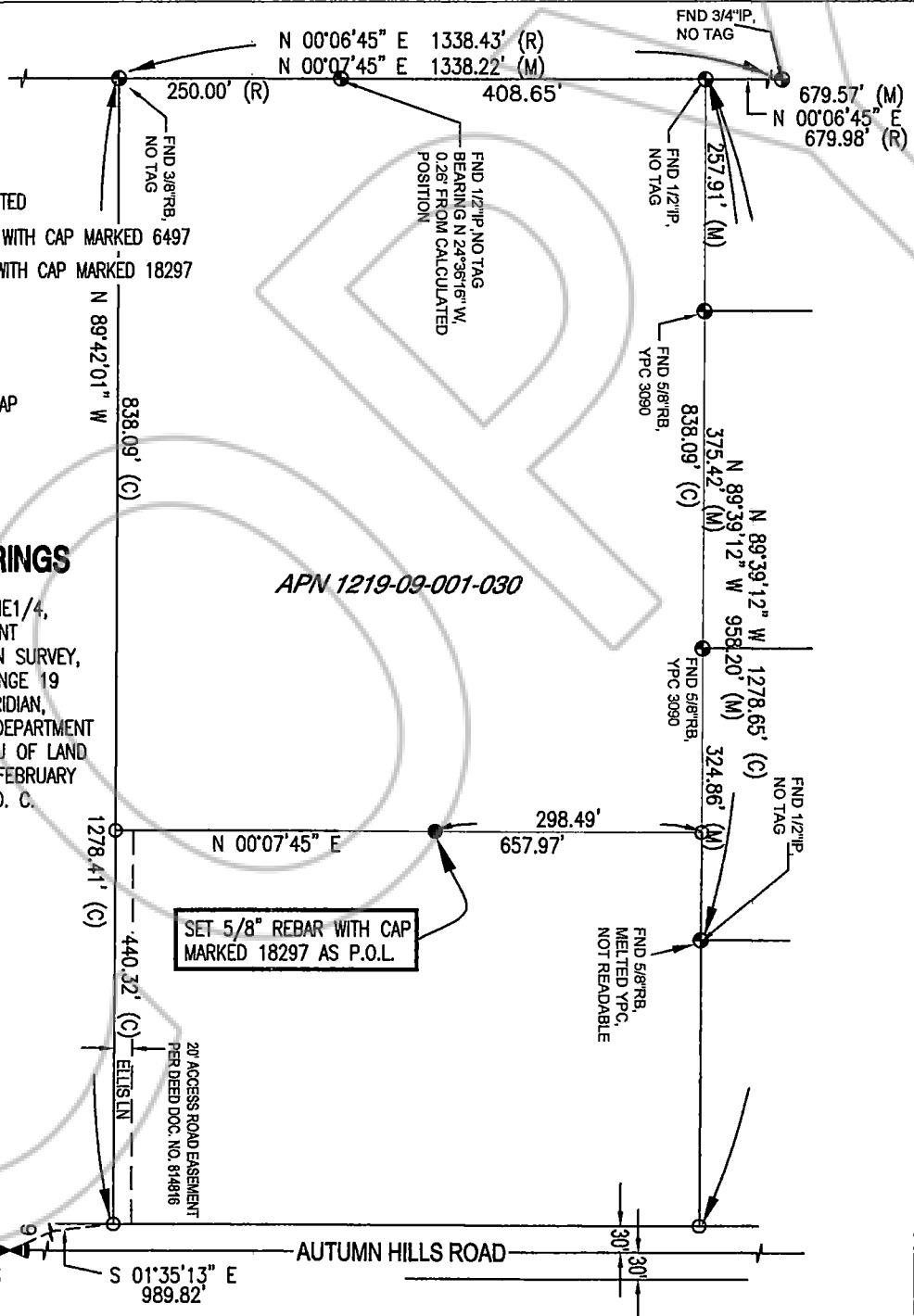
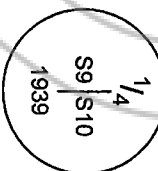
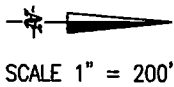
Filed as required by NRS
 Chapter 329

LEGEND

- ▲ FND. POINT AS NOTED
- FND. 5/8" REBAR WITH CAP MARKED 6497
- SET 5/8" REBAR WITH CAP MARKED 18297
- (RB) REBAR
- (IP) IRON PIPE
- (C.I.P.) CAPPED IRON PIPE
- (YPC) YELLOW PLASTIC CAP

BASIS OF BEARINGS

THE EAST LINE OF THE NE1/4,
 SECTION 9 PER DEPENDENT
 RESURVEY AND EXTENSION SURVEY,
 TOWNSHIP 12 NORTH, RANGE 19
 EAST, MOUNT DIABLO MERIDIAN,
 NEVADA, UNITED STATES DEPARTMENT
 OF THE INTERIOR, BUREAU OF LAND
 MANAGEMENT, ACCEPTED FEBRUARY
 18, 1954, WASHINGTON, D. C.
 (N. 00°09'00" E.)



SET 5/8" REBAR WITH CAP
 MARKED 18297 AS P.O.L.

20' ACCESS ROAD EASEMENT
 PER DEED DOC. NO. 814816

AUTUMN HILLS ROAD

FND 5/8" RB,
 MELTED YPC,
 NOT READABLE