

VICINITY MAP
No Scale

SURVEYOR'S CERTIFICATE

- I, John R. Langford, a Professional Land Surveyor licensed in the State of Nevada, certify that:
1. This plat represents the results of a survey conducted under my direct supervision at the instance of the Inter-Vivos Revocable Trust of Timothy W. Pemberton, owner, Timothy W. Pemberton, Trustee.
 2. The lands surveyed lie within Section 21, Township 10 North, Range 22 East, Mount Diablo Meridian, County of Douglas.
 3. The survey was completed on November 19, 2016
 4. This plat complies with applicable statutes of the State of Nevada and any local ordinances in effect on the date that the survey was completed. The survey was conducted in accordance with the requirements of Chapter 625 of the Nevada Administrative Code.
 5. The monuments depicted on this plat are of the character shown, occupy the positions indicated and are of sufficient number and durability.

John R. Langford
 PROFESSIONAL LAND SURVEYOR - STATE OF NEVADA
 JOHN R. LANGFORD
 No. 4957

John R. Langford, PLS 4957

EXP. DATE: 12/31/17
11/19/16

BASIS OF BEARINGS:

N 00 09'00"E, the easterly line of the NE 1/4 of Section 21, T10N, R22E, MDM as shown on the BLM Dependent Resurvey Map per R1.

LEGEND:

- Found section monument as noted.
- ⊕ Found a 5/8" diameter unmarked rebar. Accepted per R3.
- Set 1-1/2" aluminum cap inscribed PLS 4957 on a 5/8"x24" rebar.
- R(*) Based on record information per R(History of Surveys reference number).
- m Based on field measurements.

HISTORY OF SURVEYS:

- R1 BLM Dependent Resurvey of T10N, R22E, MDM accepted on December 14, 1949 in Washington, D.C.
- R2 Division of Lands into Large Parcels for Evan L. Allred recorded on April 26, 1993 in Book 493 of Official Records, Page 4737, File #305536.
- R3 Final Map for PLEASANT MEADOWS filed on October 12, 1993 in Book 1093 of Official Records at Page 1611; Document No. 319836.
- R4 Grant of Easement Appurtenant and Continuing Offer of Dedication between George C. Roberts, Trustee of the George C. Roberts 1990 Trust and Evan L. Allred recorded on August 30, 1994 in Book 894 of Official Records, Page 5124, File #345015.
- R5 Map of Division into Large Parcels LDA 04-040 for the INTER-VIVOS REVOCABLE TRUST OF TIMOTHY W. PEMBERTON filed on October 20, 2004 in Book 1004, Page 8412, Document No. 627209.
- R6 Grant of Easements between Evan L. Allred and Timothy W. Pemberton, as Trustee of the INTER-VIVOS REVOCABLE TRUST OF TIMOTHY W. PEMBERTON recorded on February 16, 2005 as Document No. 0636893.
- R7 Grant, Bargain, and Sale Deed between Timothy W. Pemberton, as Trustee of the INTER-VIVOS REVOCABLE TRUST OF TIMOTHY W. PEMBERTON and Nevada Johnson, Inc., a Nevada Corporation recorded on April 8, 2016 as Document No. 2016-879161.
- R8 Grant of Easement between Timothy W. Pemberton, as Trustee of the INTER-VIVOS REVOCABLE TRUST OF TIMOTHY W. PEMBERTON and Timothy W. Pemberton, as Trustee of the INTER-VIVOS REVOCABLE TRUST OF TIMOTHY W. PEMBERTON recorded on July 22, 2016 as Document No. 2016-884793.

RECORDER'S CERTIFICATE

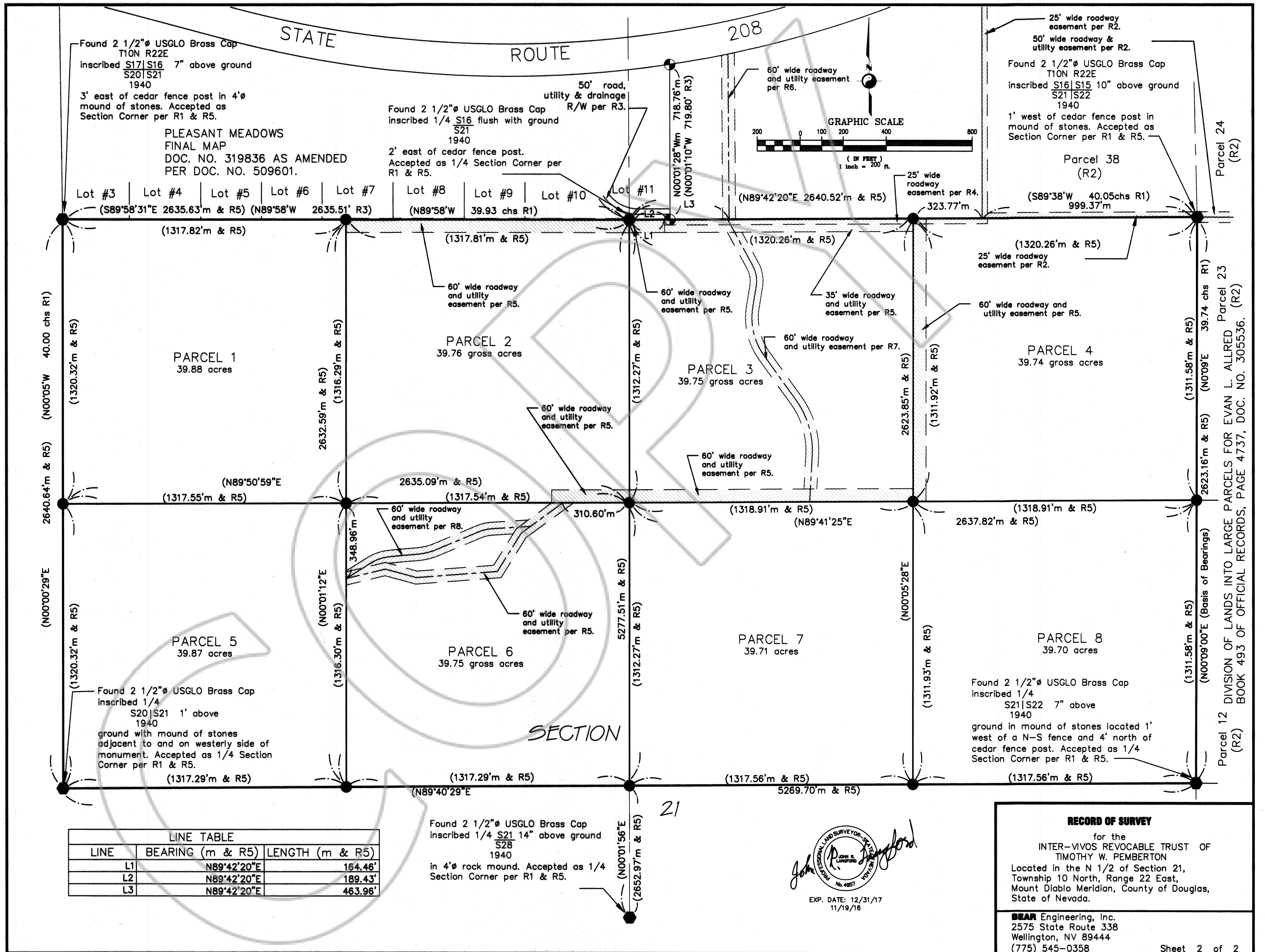
Filed this 29th day of NOVEMBER, 2016
 at 23 minutes past 9 o'clock A.m. as
 Document No. 2016-891278
 Recorded at the Request of Timothy W. Pemberton.

John D. Howell DEPUTY
 Douglas County Recorder

RECORD OF SURVEY

for the
 INTER-VIVOS REVOCABLE TRUST OF
 TIMOTHY W. PEMBERTON
 Located in the N 1/2 of Section 21,
 Township 10 North, Range 22 East,
 Mount Diablo Meridian, County of Douglas,
 State of Nevada.

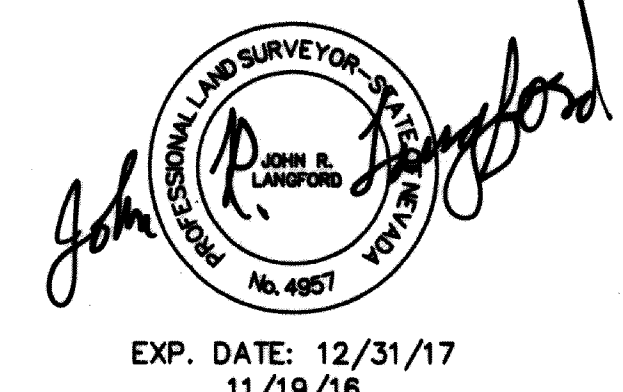
BEAR Engineering, Inc.
 2575 State Route 338
 Wellington, NV 89444
 (775) 545-0358



LINE TABLE

LINE	BEARING (m & R5)	LENGTH (m & R5)
L1	N89°42'20"E	164.46'
L2	N89°42'20"E	189.43'
L3	N89°42'20"E	463.96'

Found 2 1/2" USGLO Brass Cap inscribed 1/4 S28 14" above ground 1940 in 4" rock mound. Accepted as 1/4 Section Corner per R1 & R5.



EXP. DATE: 12/31/17
11/19/16

RECORD OF SURVEY
for the
INTER-VIVOS REVOCABLE TRUST OF
TIMOTHY W. PEMBERTON
Located in the N 1/2 of Section 21,
Township 10 North, Range 22 East,
Mount Diablo Meridian, County of Douglas,
State of Nevada.

BEAR Engineering, Inc.
2575 State Route 338
Wellington, NV 89444
(775) 545-0358