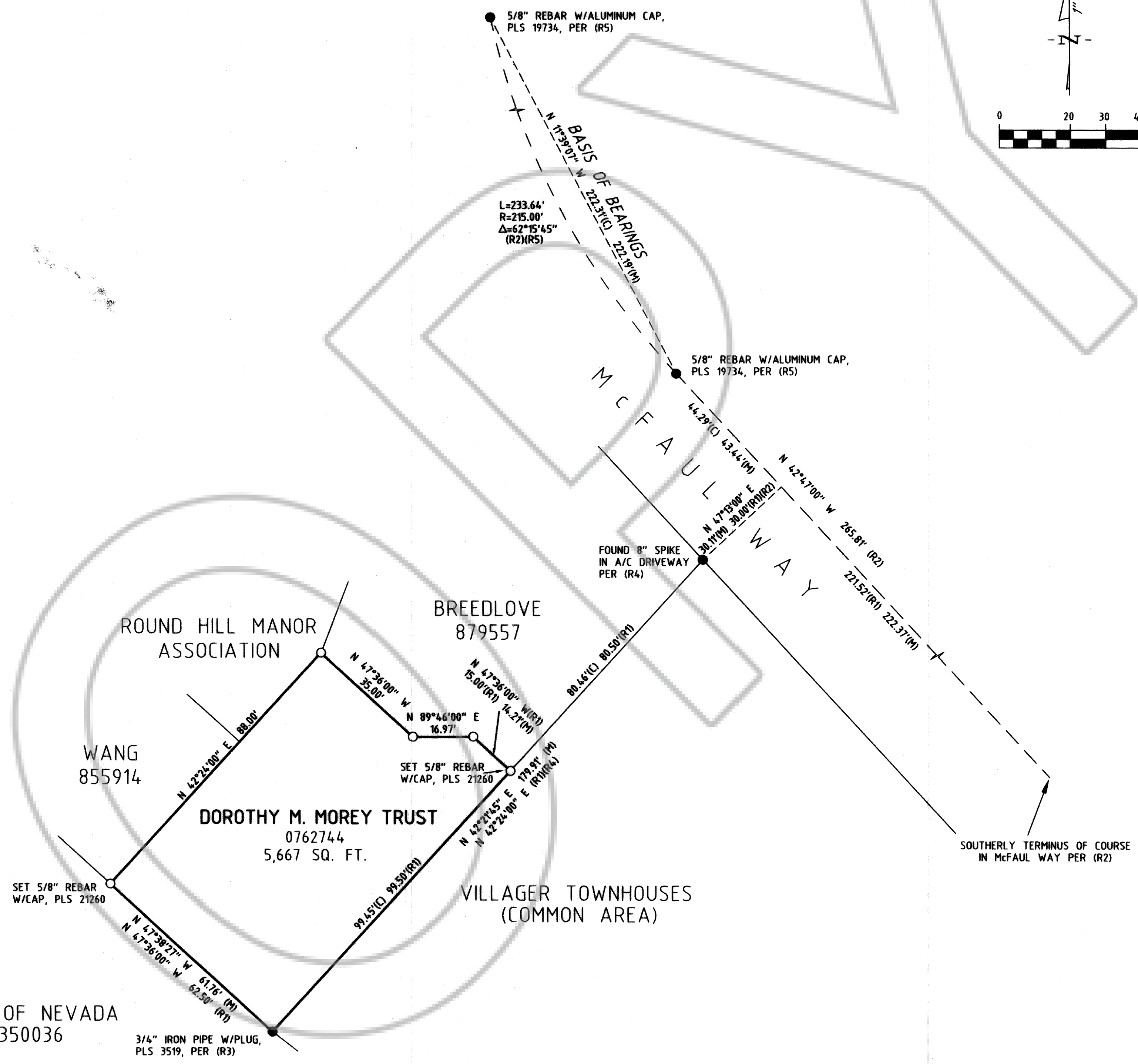
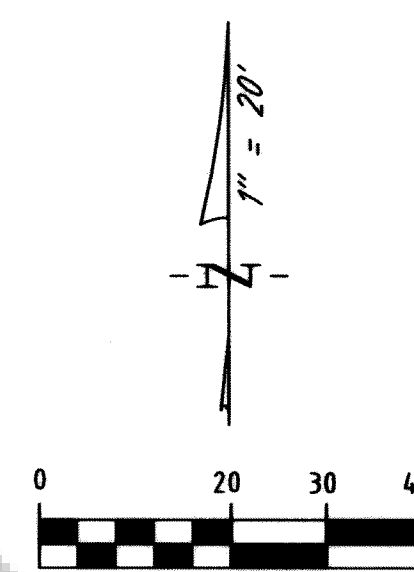


**SURVEYOR'S CERTIFICATE**

I, JEFFERY W. TURNER, A PROFESSIONAL LAND SURVEYOR LICENSED IN THE STATE OF NEVADA, CERTIFY THAT:  
 1. THIS IS A TRUE AND ACCURATE REPRESENTATION OF THE LANDS SURVEYED UNDER MY SUPERVISION AT THE INSTANCE OF DIANE DAHLHEIM.  
 2. THE LANDS SURVEYED LIE WITHIN A PORTION OF SECTION 15, TOWNSHIP 13 NORTH, RANGE 18 EAST, M.D.M., AND THE SURVEY WAS COMPLETED ON APRIL 14, 2017.  
 3. THIS PLAT COMPLIES WITH THE APPLICABLE STATE STATUTES AND ANY LOCAL ORDINANCE AND IS NOT IN CONFLICT WITH THE PROVISIONS FOR N.R.S. 278.010 TO 278.630, INCLUSIVE.  
 4. THE MONUMENTS ARE OF THE CHARACTER SHOWN AND OCCUPY THE POSITIONS INDICATED.

*Jeffery W. Turner*  
 JEFFERY W. TURNER  
 P.L.S. 21260

12 JULY 17  
 DATE



**BASIS OF BEARINGS**  
 THE MERIDIAN OF THIS SURVEY IS IDENTICAL WITH ROUND HILL VILLAGE UNIT NO. 1, FILED FOR RECORD ON APRIL 21, 1965 AS DOCUMENT NUMBER 27741, AS MEASURED BETWEEN FOUND MONUMENTS PER (R5).

- REFERENCES**
- (R1) QUITCLAIM DEED, FILED FOR RECORD ON APRIL 29, 2010 AS DOCUMENT NUMBER 0762744.
  - (R2) ROUND HILL VILLAGE UNIT NO. 1, FILED FOR RECORD ON APRIL 21, 1965 AS DOCUMENT NUMBER 27741.
  - (R3) RECORD OF SURVEY FOR NEVADA ALLIED IND., FILED FOR RECORD ON SEPTEMBER 25, 1980 AS DOCUMENT NUMBER 48927.
  - (R4) VILLAGER TOWNHOUSES, FILED FOR RECORD ON AUGUST 29, 1977 AS DOCUMENT NUMBER 12403.
  - (R5) RECORD OF SURVEY FOR ROUND HILL GENERAL IMPROVEMENT DISTRICT, FILED FOR RECORD ON DECEMBER 5, 2013 AS DOCUMENT NUMBER 834982.

**NOTE**  
 THIS MAP IS BEING FILED TO DELINEATE PROPERTY LINES AS DESCRIBED IN DEEDS RECORDED IN THE OFFICIAL RECORDS OF DOUGLAS COUNTY, NEVADA.

**COUNTY RECORDER'S CERTIFICATE**  
 FILED FOR RECORD THIS 12 DAY OF July, 2017  
 AT 37 MINUTES PAST 1 O'CLOCK P.M., AS DOCUMENT NUMBER 2017-901274  
 RECORDED AT THE REQUEST OF TURNER & ASSOCIATES, INC.  
*John D. Small* DEPUTY  
 DOUGLAS COUNTY RECORDER

- LEGEND**
- FOUND AS NOTED
  - SET NAIL & TAG IN, PLS 21260 UNLESS OTHERWISE NOTED
  - (C) CALCULATED
  - (M) MEASURED

**TURNER & ASSOCIATES, INC.**  
 LAND SURVEYING  
 (775) 588-5658  
 FAX (775) 588-9296  
 308 DORLA COURT, SUITE 203 - ROUND HILL, NEVADA 89448  
 P.O. BOX 5067 - STATELINE, NEVADA 89449  
 JN-17023

SCALE: 1"=20' SHEET 1 OF 1

**RECORD OF SURVEY**  
 FOR  
**DIANE DAHLHEIM**  
 PORTION OF SECTION 15, T.13N., R.18E., M.D.M.  
 DOUGLAS COUNTY, NEVADA  
 FILE NO. 17023.DWG JULY 2017