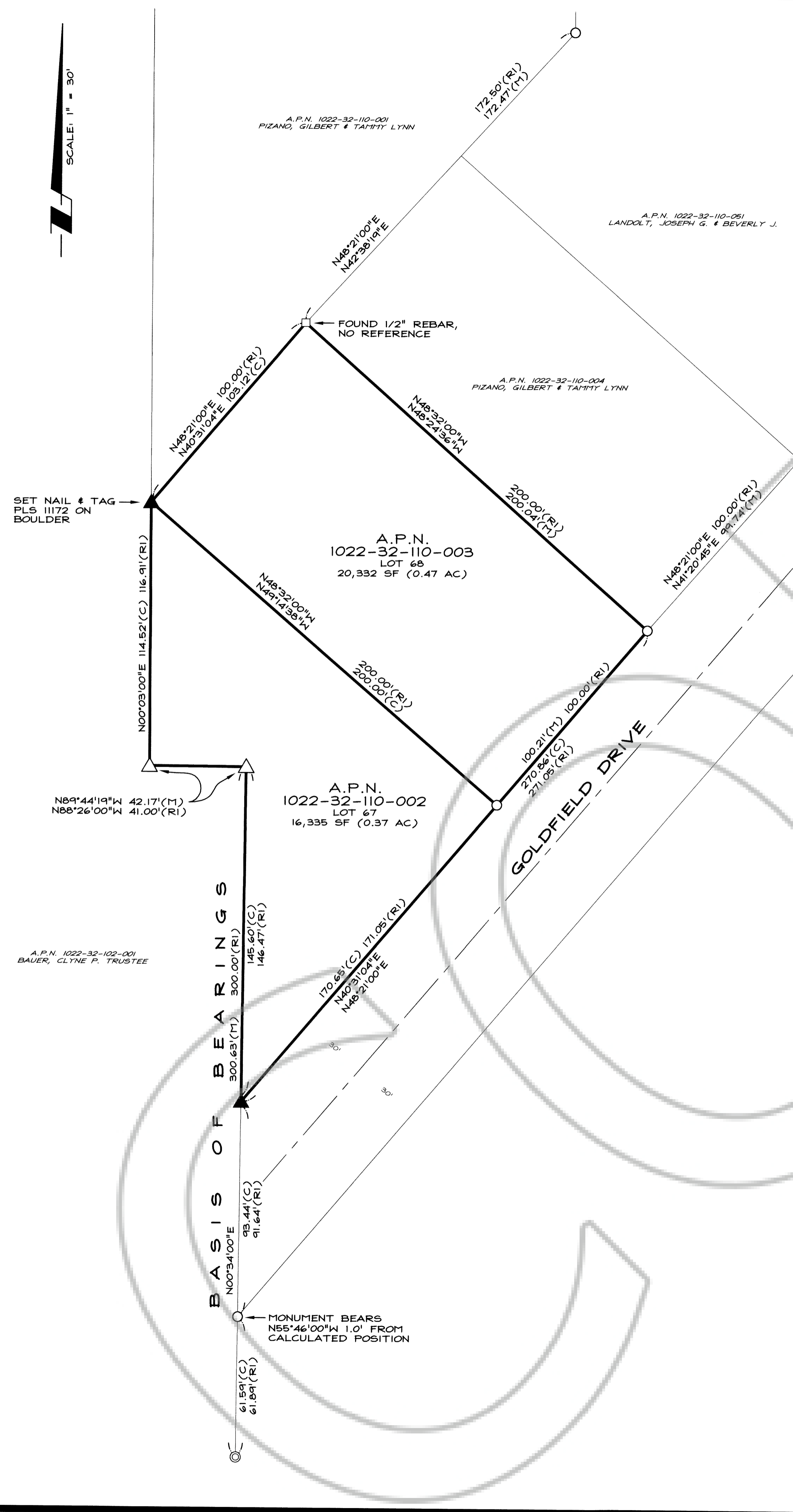
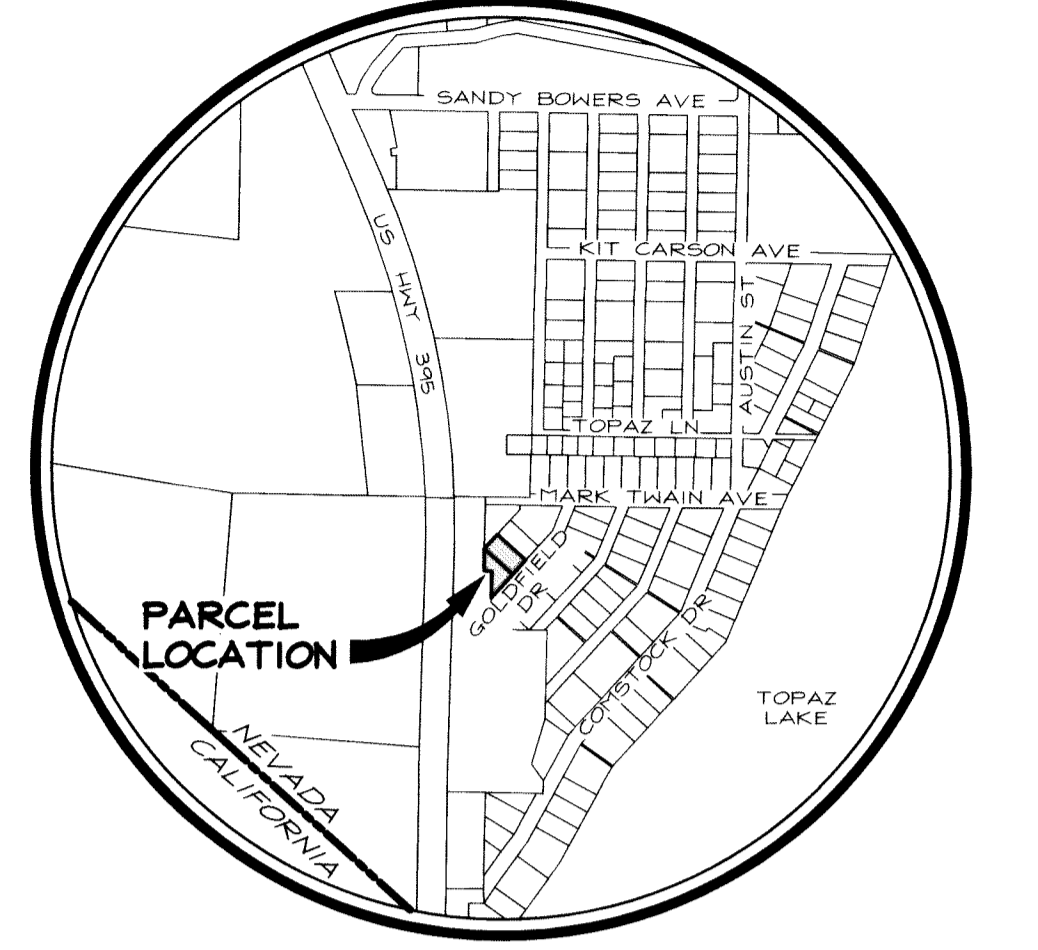


SCALE: 1" = 30'



- LEGEND**
- ▲ SET 5/8" REBAR WITH PLASTIC CAP PLS 11172 OR AS INDICATED
  - FOUND 3/8" REBAR WITH ORANGE PAINT PER (RI)
  - FOUND 1/2" REBAR WITH TAG LS 1635 OR AS INDICATED
  - ⊙ FOUND 3/4" IRON PIPE
  - △ FOUND 5/8" REBAR WITH PLASTIC CAP PLS 4248
  - (C) CALCULATED BEARING AND DISTANCE
  - (M) MEASURED BEARING AND DISTANCE
  - (RI) RECORD BEARING AND DISTANCE PER THE TOPAZ SUBDIVISION BY WALKER RIVER IRRIGATION DISTRICT FILED FOR RECORD AUGUST 10, 1954 AS DOCUMENT NO. 9774

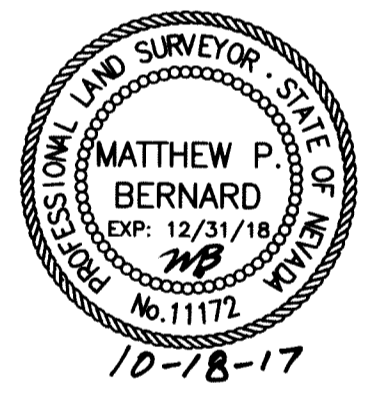


**VICINITY MAP**  
NO SCALE

**SURVEYOR'S CERTIFICATE**

I, MATTHEW P. BERNARD, A PROFESSIONAL LAND SURVEYOR LICENSED IN THE STATE OF NEVADA CERTIFY THAT:

- THIS PLAT REPRESENTS THE RESULTS OF A SURVEY CONDUCTED UNDER MY DIRECT SUPERVISION AT THE INSTANCE OF JEFF RODEN.
- THE LANDS SURVEYED LIE WITHIN A PORTION OF SECTION 32, T.10N., R.22E., M.D.M. AND THE SURVEY WAS COMPLETED ON AUGUST 10, 2017.
- THIS PLAT COMPLIES WITH THE APPLICABLE STATE STATUTES AND ANY LOCAL ORDINANCE IN EFFECT ON THE DATE THAT THE SURVEY WAS COMPLETED.
- THE MONUMENTS DEPICTED ON THE PLAT ARE OF THE CHARACTER SHOWN, OCCUPY THE POSITIONS INDICATED AND ARE OF SUFFICIENT NUMBER AND DURABILITY.



*Matthew P. Bernard*  
MATTHEW P. BERNARD, P.L.S. 11172

**BASIS OF BEARING**

N00°34'00"E - THE WESTERLY LINE OF LOT 58 & 67 AS SHOWN ON THE TOPAZ SUBDIVISION BY WALKER RIVER IRRIGATION DISTRICT FILED FOR RECORD AUGUST 10, 1954 AS DOCUMENT NO. 9774.

**NOTES**

THIS RECORD OF SURVEY HAS BEEN PREPARED TO SHOW THE BOUNDARIES OF LOTS 67 & 68 OF THE TOPAZ SUBDIVISION BY WALKER RIVER IRRIGATION DISTRICT FILED FOR RECORD AUGUST 10, 1954 AS DOCUMENT NO. 9774.

THIS MAP DOES NOT ATTEMPT TO SHOW ANY EASEMENTS OF RECORD.

THIS MAP IS NOT IN CONFLICT WITH N.R.S. 278.010 TO 278.630 INCLUSIVE.

**RECORDER'S CERTIFICATE**

FILED FOR RECORD THIS 19<sup>th</sup> DAY OF October, 2017, AT 24 MINUTES PAST 2 O'CLOCK P.M., AS DOCUMENT NO. 2017-905823 OF OFFICIAL RECORDS. RECORDED AT THE REQUEST OF MATTHEW P. BERNARD.

*Shannon DeCorse*  
DOUGLAS COUNTY RECORDER

SCALE: 1" = 30' SHEET 1 OF 1

**RECORD OF SURVEY**  
OF  
**LOT 67 & 68**  
**TOPAZ SUBDIVISION**

LOCATED WITHIN A PORTION OF SECTION 32, T.10N., R.22E., M.D.M. DOUGLAS COUNTY, NEVADA

**R O Anderson**  
www.ROANDERSON.COM  
RENO  
1623 Esmeralda Ave Suite 507  
P.O. Box 2228 Henderson, NV 89023  
p 775.782.2322 f 775.782.7064

