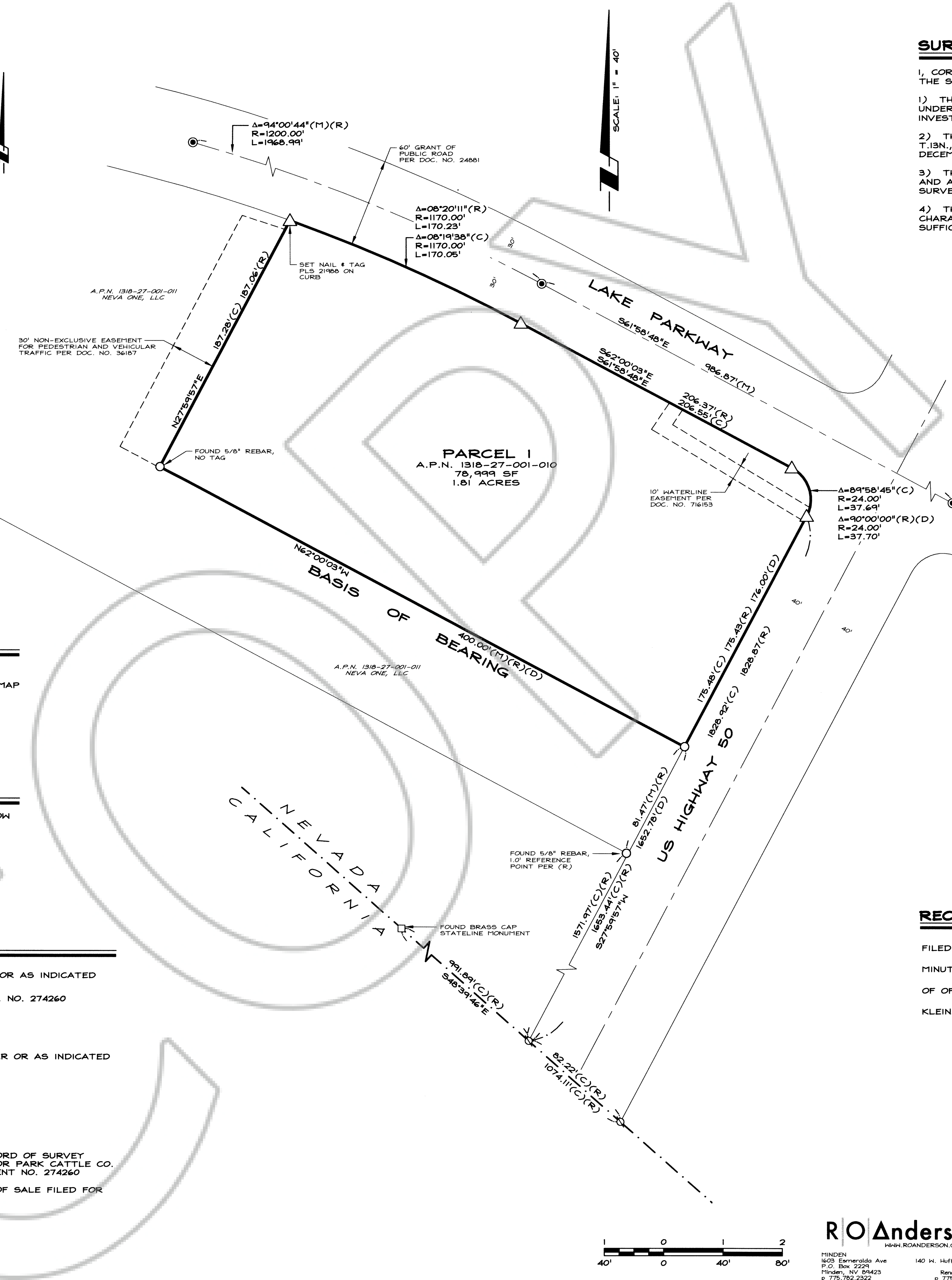


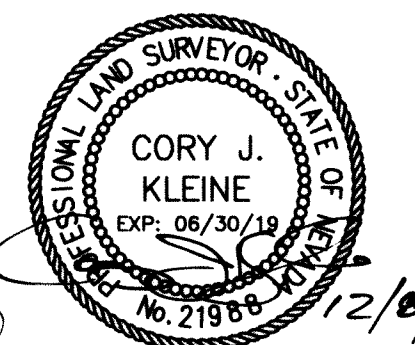
VICINITY MAP
NO SCALE



SURVEYOR'S CERTIFICATE

I, CORY J. KLEINE, A PROFESSIONAL LAND SURVEYOR LICENSED IN THE STATE OF NEVADA CERTIFY THAT:

- 1) THIS PLAT REPRESENTS THE RESULTS OF A SURVEY CONDUCTED UNDER MY DIRECT SUPERVISION AT THE INSTANCE OF GENOA RIDGE INVESTORS.
- 2) THE LANDS SURVEYED LIE WITHIN A PORTION OF SECTION 27, T.13N., R.18E., M.D.M. AND THE SURVEY WAS COMPLETED ON DECEMBER 4, 2017.
- 3) THIS PLAT COMPLIES WITH THE APPLICABLE STATE STATUTES AND ANY LOCAL ORDINANCE IN EFFECT ON THE DATE THAT THE SURVEY WAS COMPLETED.
- 4) THE MONUMENTS DEPICTED ON THE PLAT ARE OF THE CHARACTER SHOWN, OCCUPY THE POSITIONS INDICATED AND ARE OF SUFFICIENT NUMBER AND DURABILITY.



Cory J. Kleine
CORY J. KLEINE, P.L.S. 21988

BASIS OF BEARING

N62°00'03"W -- THE NORTHEASTERLY LINE OF PARCEL 07-030-05(3.026 AC) AS SHOWN ON THE RECORD OF SURVEY TO SUPPORT A BOUNDARY LINE ADJUSTMENT MAP FOR PARK CATTLE CO. FILED FOR RECORD MARCH 27, 1992 AS DOCUMENT NO. 274260.

NOTES

THIS RECORD OF SURVEY HAS BEEN PREPARED TO SHOW THE BOUNDARIES OF A.P.N. 1318-27-001-010.
THIS MAP IS NOT IN CONFLICT WITH N.R.S. 278.010 TO 278.630 INCLUSIVE.

LEGEND

- △ SET 5/8" REBAR WITH PLASTIC CAP PLS 21988 OR AS INDICATED
- FOUND 5/8" REBAR WITH CAP LS 1797 PER DOC. NO. 274260 OR AS INDICATED
- FOUND BRASS CAP STATELINE MONUMENT
- FOUND CENTERLINE MONUMENTS WITH 1/2" REBAR OR AS INDICATED
- ⊕ NOTHING FOUND OR SET
- (C) CALCULATED BEARING AND DISTANCE
- (M) MEASURED BEARING AND DISTANCE
- (R) RECORD BEARING AND DISTANCE PER THE RECORD OF SURVEY SUPPORTING A BOUNDARY LINE ADJUSTMENT FOR PARK CATTLE CO. FILED FOR RECORD MARCH 27, 1992 AS DOCUMENT NO. 274260
- (D) DEED BEARING AND DISTANCE PER THE DEED OF SALE FILED FOR RECORD APRIL 12, 1979 AS DOCUMENT NO. 31610

RECORDER'S CERTIFICATE

FILED FOR RECORD THIS 8th DAY OF December, 2017, AT 30 MINUTES PAST 9 O'CLOCK A.M., AS DOCUMENT NO. 2017-907795 OF OFFICIAL RECORDS. RECORDED AT THE REQUEST OF CORY J. KLEINE.

Shaunyne Larren, Deputy
DOUGLAS COUNTY RECORDER

SCALE: 1" = 40' SHEET 1 OF 1

RECORD OF SURVEY
FOR
GENOA RIDGE INVESTORS

LOCATED WITHIN A PORTION OF SECTION 27,
T.13N., R.18E., M.D.M.
DOUGLAS COUNTY, NEVADA

