

CORNER RECORD

APN: 1319-18-312-015 & 016, 1319-18-312-040 & 041



KAREN ELLISON, RECORDER

Return to:
Farr West Engineering
5510 Longley Lane
Reno, NV 89511
Phone: (775) 851-4788
Fax: (775) 851-0766

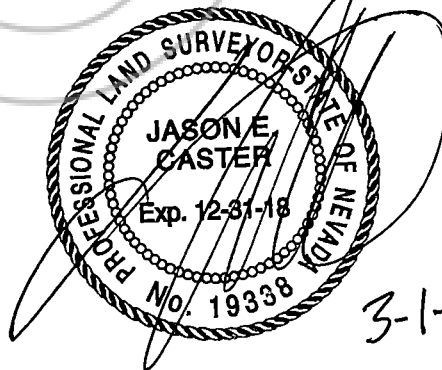
Re: Rear corner common to Lots 24 through 27 as shown on Kingsbury Village Unit 5, Final Map 33786, recorded on September 7, 1966, filed in the Official Records of Douglas County, Nevada .

SURVEYOR'S CERTIFICATE

I Jason E. Caster, a Professional Land Surveyor registered in the State of Nevada, certify that:

1. This corner record represents the establishment or restoration of corners or accessories to a corner conducted under my direct supervision.
2. The monuments or accessories perpetuated lie within the Southwest One-Quarter (SW 1/4) of Section Eighteen (18), Township Thirteen (13) North, Range Nineteen (19) East, Mount Diablo Meridian, County of Douglas, State of Nevada, and the restoration was completed on October 10, 2017.
3. This corner record has been filed pursuant to NRS 329.010 and any local ordinances in effect on the date that the establishment or restoration was completed.
4. The monument or witness monument and accessories found are of the character shown, occupy the positions indicated and are of sufficient durability.

Prepared by:
Farr West Engineering
5510 Longley Lane
Reno, NV. 89511



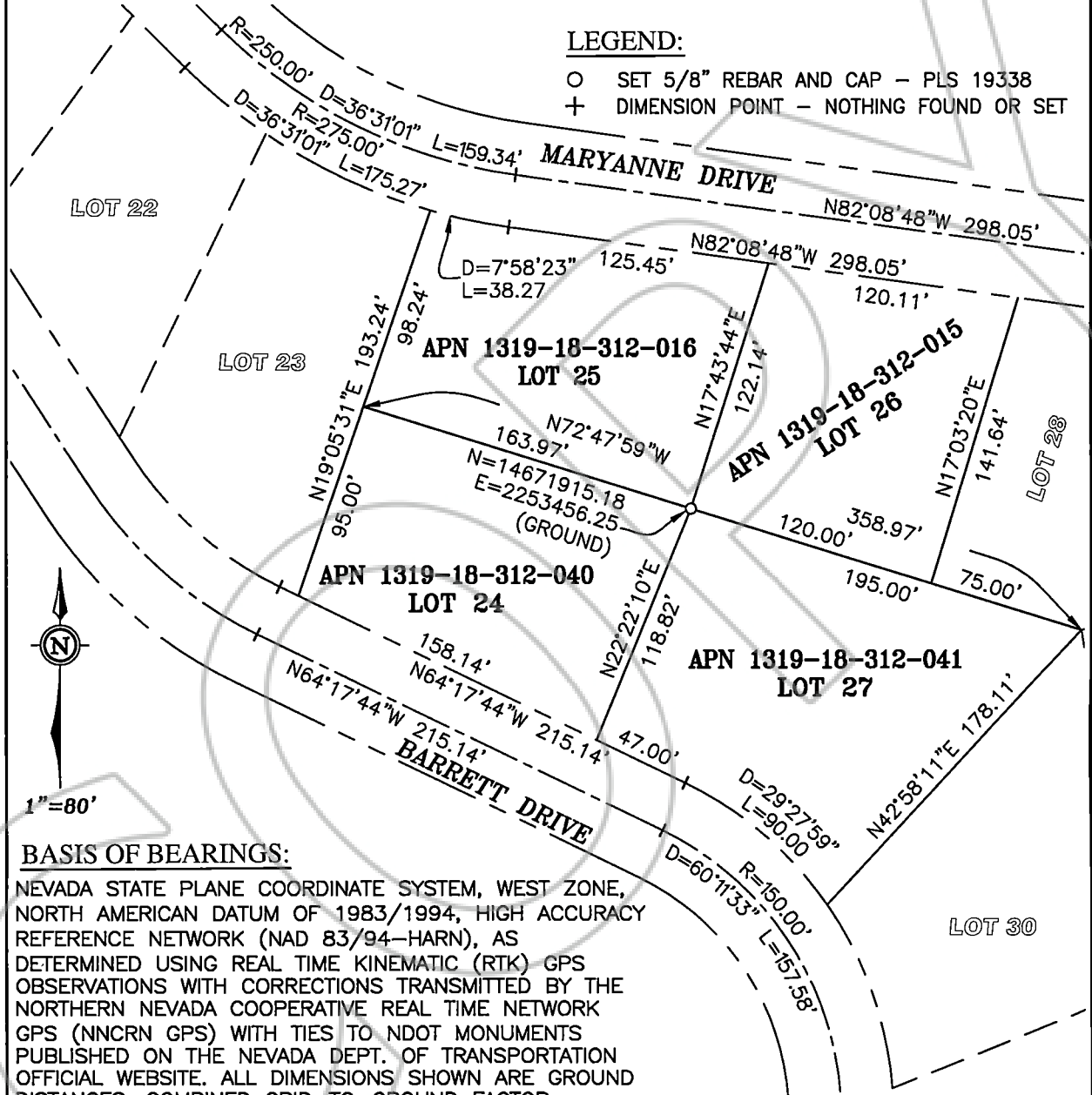
3-1-18

Jason E. Caster, P.L.S.,
Nevada Certificate No.19338

EXHIBIT MAP TO SUPPORT
 CORNER RECORD
 LOTS 24 THROUGH 27
 KINGSBURY VILLAGE UNIT 5 - FINAL MAP 33786
 BEING A PORTION OF THE SW 1/4 OF SECTION 18
 TOWNSHIP 13 NORTH, RANGE 19 EAST, M.D.M
 DOUGLAS COUNTY NEVADA

LEGEND:

- SET 5/8" REBAR AND CAP - PLS 19338
- + DIMENSION POINT - NOTHING FOUND OR SET



BASIS OF BEARINGS:
 NEVADA STATE PLANE COORDINATE SYSTEM, WEST ZONE,
 NORTH AMERICAN DATUM OF 1983/1994, HIGH ACCURACY
 REFERENCE NETWORK (NAD 83/94-HARN), AS
 DETERMINED USING REAL TIME KINEMATIC (RTK) GPS
 OBSERVATIONS WITH CORRECTIONS TRANSMITTED BY THE
 NORTHERN NEVADA COOPERATIVE REAL TIME NETWORK
 GPS (NNCRN GPS) WITH TIES TO NDOT MONUMENTS
 PUBLISHED ON THE NEVADA DEPT. OF TRANSPORTATION
 OFFICIAL WEBSITE. ALL DIMENSIONS SHOWN ARE GROUND
 DISTANCES. COMBINED GRID-TO-GROUND FACTOR =
 1.0002300000.

<p>FARR WEST ENGINEERING 5510 LONGLEY LANE RENO, NEVADA 89511 PHONE: (775) 851-4788 FAX: (775) 851-0766</p>	<p align="center"><i>EXHIBIT A-1</i> PLAT TO ACCOMPANY DESCRIPTION</p> <p>DOUGLAS COUNTY</p>	<p>JOB NO. 1319 SHEET 1 OF 1</p> <p align="right">NEVADA</p>
--	--	---