

CORNER RECORD



KAREN ELLISON, RECORDER

When Recorded return a copy to:

Lumos & Associates, Inc.
PO Box 3570
Stateline, NV 89449

RE: Section Corner common to Sections 9-10-15-16
T 13 N, R 18 E, MDM

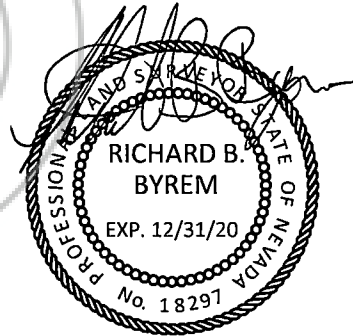
Surveyor's Certificate

I, Richard B. Byrem, a Professional Land Surveyor registered in the State of Nevada, certify that:

1. This corner record represents the establishment or restoration of a corner or accessory to a corner conducted under my direct supervision.
2. The monument or accessories perpetuated lie at the corner common to Sections 9, 10, 15 and 16, Township 13 North, Range 18 East of the Mount Diablo Meridian, and the establishment or restoration was completed on March 4, 2019.
3. This corner record has been filed pursuant to NRS 329.140 or 329.150 and complies with the provisions of NAC 329.101 and any local ordinances in effect on the date that the establishment or restoration was completed.
4. The monument or witness monument and accessories found are of the character shown, occupy the positions indicated and are of sufficient durability.

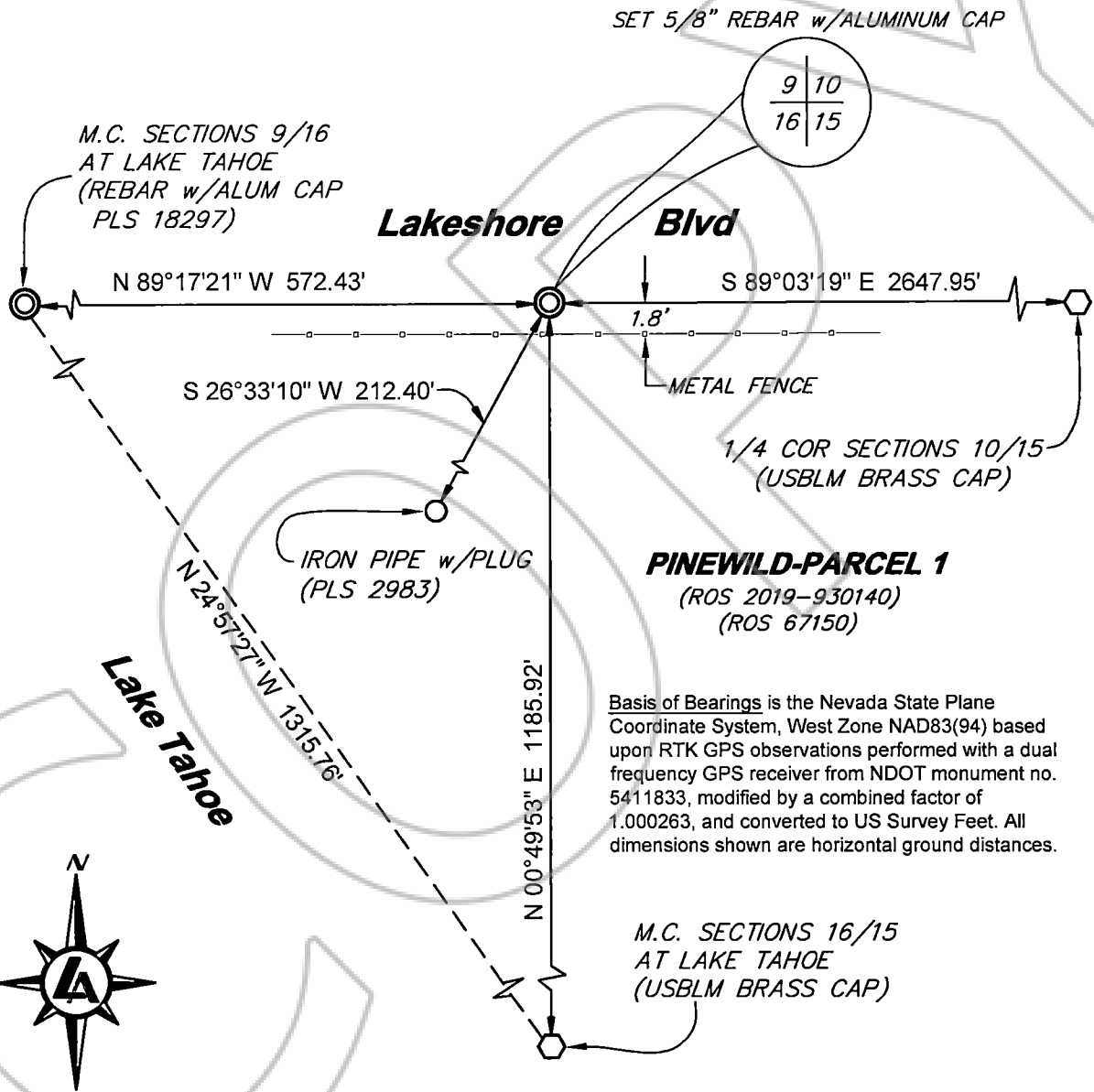
Richard B. Byrem, NV PLS 18297

Date: 5 March 2020



ORIGINAL MONUMENT: "At the corner point, in center of concrete hub, set a regulation brass cap, 3 1/2 ins. diam., 3 in. stem, for cor. of secs. 9,10,15, and 16" - from original BLM notes of 1954 Dependent Resurvey of T13N, R18E (obliterated)

NEW MONUMENT: Set 5/8" rebar with 2 1/2" diameter aluminum cap flush with top of an existing asphalt curb on the south side of Lakeshore Boulevard at the position shown on the Official Plat of Pinewild, a Condominium, as filed for record on June 26, 1973, at Document no. 67150, in the Official Records of Douglas County.



LUMOS & ASSOCIATES
 225 KINGSBURY GRADE, SUITE A
 PO BOX 3570, STATELINE, NV 89449
 TEL (775) 588-6490

CORNER RECORD
SEC COR 9-10-15-16, T13N, R18E, MDM
DOUGLAS COUNTY NEVADA

Scale: No Scale
 Job No: 8966.004
 Page 2 of 2