

DOUGLAS COUNTY, NV 2020-946517
Rec:\$40.00
Total:\$40.00 05/22/2020 02:52 PM
LANGFORDS BEAR ENG Pgs=3



KAREN ELLISON, RECORDER

RECORDING REQUESTED BY:

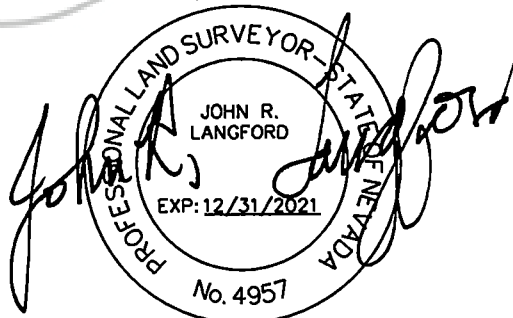
John Langford
2575 State Route 338
Wellington, NV 89444

CORNER RECORD SURVEYOR'S CERTIFICATE

I, John R. Langford, a Professional Land Surveyor registered in the State of Nevada, certify that:

1. This corner record represents the establishment or restoration of a corner or accessory to a corner conducted under my direct supervision.
2. The monument or accessories perpetuated lie within Section 23, T 13 N, R 20 E, MDM, County of Douglas, and the establishment or restoration was completed on April 30, 2020.
3. This Corner Record has been filed pursuant to NRS 329.140 or 329.150 and complies with the provisions of NAC 329.010 and any local ordinances in effect on the date that the establishment or restoration was completed.
4. The monument or witness monument and accessories found are of the character shown, occupy the positions indicated, and are of sufficient durability.

JOHN R LANGFORD
PLS 4957



MAY 18 2020

MONUMENTATION NOTES

The monuments in the centerline of Painted Desert Drive in the GRANDVIEW ESTATES PHASE I subdivision were removed during reconstruction of the aforementioned streets.

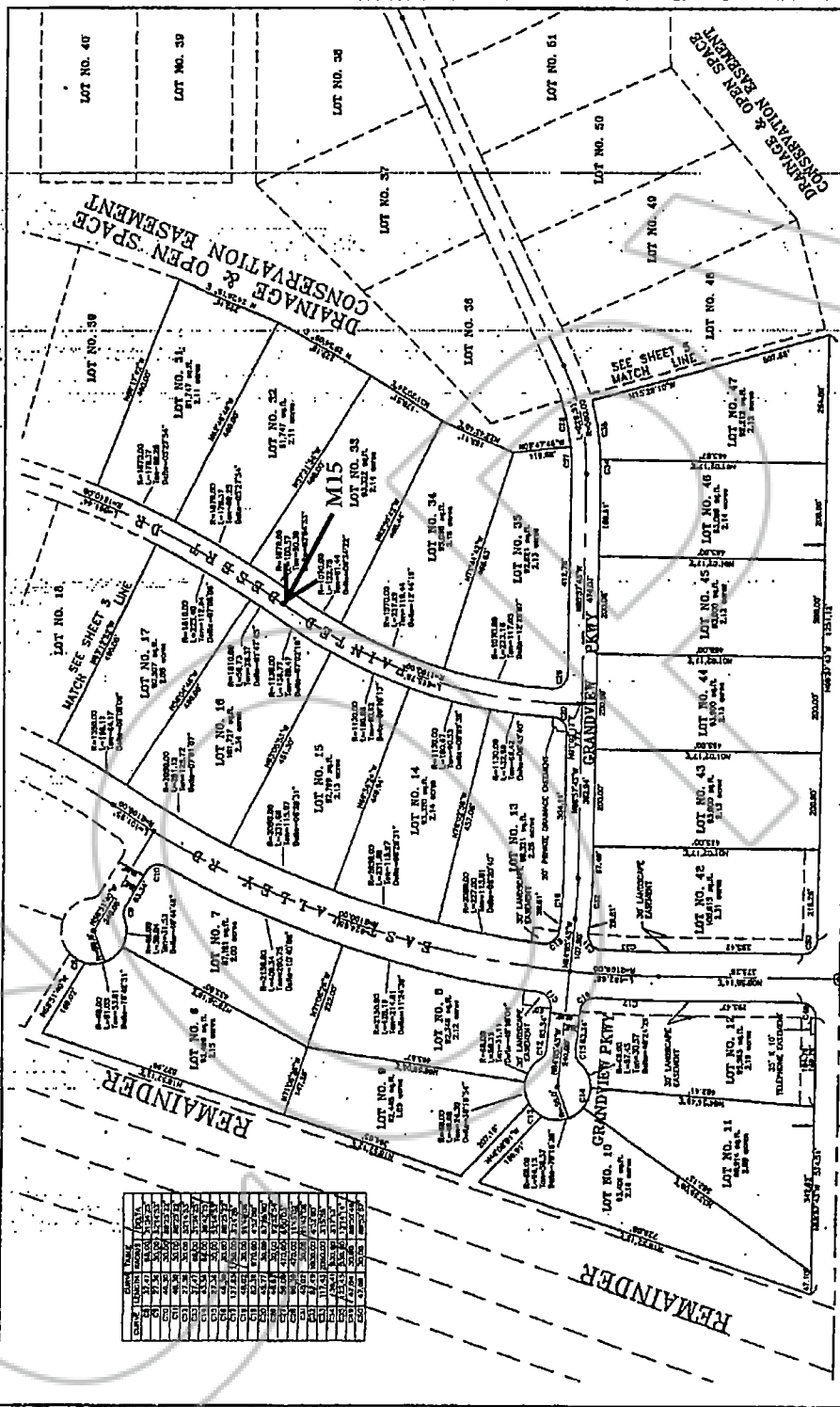
The found monuments as noted on the attached subdivision map are described as follows:

M15: A 1-1/2" aluminum cap inscribed PLS 14115 on a 3/4"Ø rebar down 0.4' from finish pavement grade in an 8"Ø cast iron monument well with a 2.5' concrete collar.

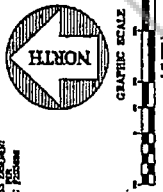
All monuments were measured prior to reconstruction. After reconstruction a 1-1/2"Ø aluminum cap inscribed PLS4957 on a 5/8"Øx24" rebar was set down 0.4' below the new pavement grade at the measured location of each monument. Each monument was placed in an 8"Ø cast iron monument well set in a 2.5' concrete collar.

RECORD REFERENCE

FINAL MAP NO. PD 99-12-01, GRANDVIEW ESTATES PHASE I filed on January 6, 2003, File No. 562908



FINAL MAP #ED 99-12-01
GRANDVIEW ESTATES
 A PLANNED UNIT DEVELOPMENT
 LOCATED IN THE N 1/4 OF SECTION 34 AND THE
 S 1/4 OF SECTION 34, T.14N., R.10E., M.13B., M.1.
 SHEET FOUR OF FIVE
 PORTLAND COUNTY



LEGEND
 ■ EXISTING EASEMENT
 ■ EXISTING LOT
 ■ ACCESS EASEMENT
 ■ SEE SHEET MATCH LINE

NOTES:
 1. ALL PUBLIC UTILITY AND EASEMENT RIGHTS SHALL REMAIN AS SHOWN ON THIS LOT BACK.
 2. ALL PUBLIC UTILITY AND EASEMENT RIGHTS SHALL REMAIN AS SHOWN ON THIS LOT BACK.
 (PLEASE INQUIRE SEPARATELY)

LOT NO.	AREA (SQ. FT.)	AREA (ACRES)	PERCENTAGE OF TOTAL
7	1,234	0.028	0.28
8	1,234	0.028	0.28
9	1,234	0.028	0.28
10	1,234	0.028	0.28
11	1,234	0.028	0.28
12	1,234	0.028	0.28
13	1,234	0.028	0.28
14	1,234	0.028	0.28
15	1,234	0.028	0.28
16	1,234	0.028	0.28
17	1,234	0.028	0.28
18	1,234	0.028	0.28
19	1,234	0.028	0.28
20	1,234	0.028	0.28
21	1,234	0.028	0.28
22	1,234	0.028	0.28
23	1,234	0.028	0.28
24	1,234	0.028	0.28
25	1,234	0.028	0.28
26	1,234	0.028	0.28
27	1,234	0.028	0.28
28	1,234	0.028	0.28
29	1,234	0.028	0.28
30	1,234	0.028	0.28
31	1,234	0.028	0.28
32	1,234	0.028	0.28
33	1,234	0.028	0.28
34	1,234	0.028	0.28
35	1,234	0.028	0.28
36	1,234	0.028	0.28
37	1,234	0.028	0.28
38	1,234	0.028	0.28
39	1,234	0.028	0.28
40	1,234	0.028	0.28
41	1,234	0.028	0.28
42	1,234	0.028	0.28
43	1,234	0.028	0.28
44	1,234	0.028	0.28
45	1,234	0.028	0.28
46	1,234	0.028	0.28
47	1,234	0.028	0.28
48	1,234	0.028	0.28
49	1,234	0.028	0.28
50	1,234	0.028	0.28
51	1,234	0.028	0.28
TOTAL	43,710	1.000	100.00

BENTLY
 ENGINEERING CONSULTANTS
 1000 BENTLEY BLVD. N.W.
 ALPHARETTA, GA 30201
 (770) 442-1100
 www.bentley-engineering.com