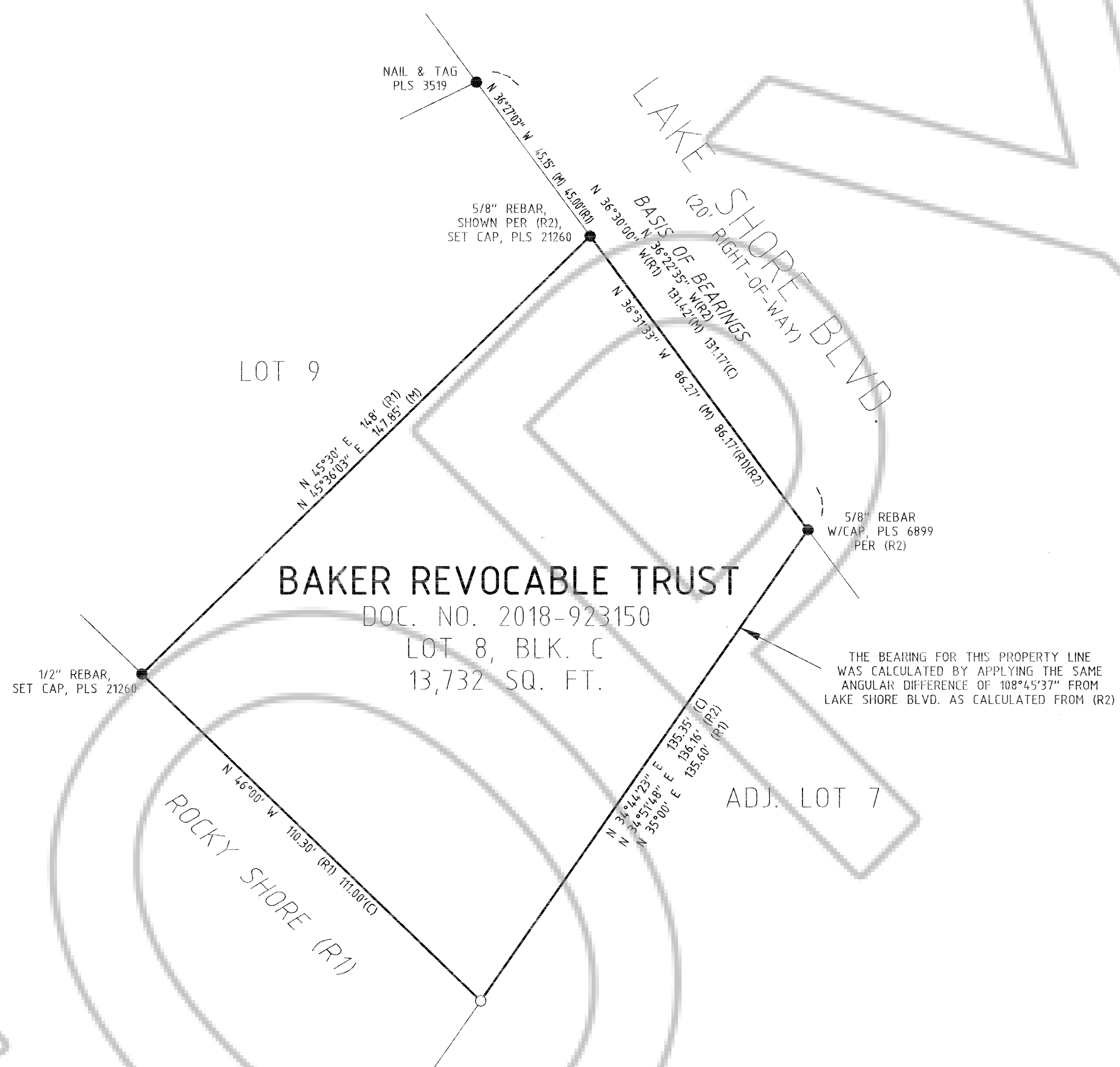
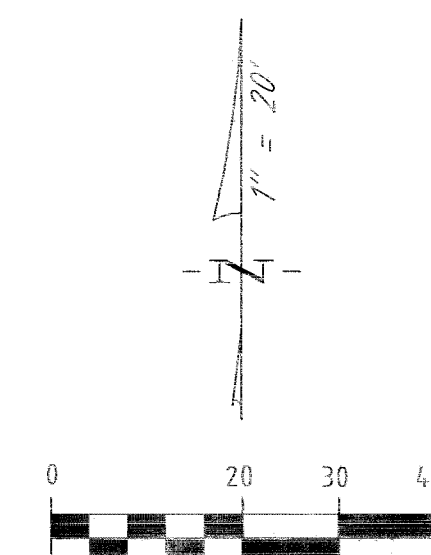


SURVEYOR'S CERTIFICATE

I, JEFFERY W. TURNER, A PROFESSIONAL LAND SURVEYOR LICENSED IN THE STATE OF NEVADA, CERTIFY THAT:
 1. THIS IS A TRUE AND ACCURATE REPRESENTATION OF THE LANDS SURVEYED UNDER MY SUPERVISION AT THE INSTANCE OF RANDAL BAKER.
 2. THE LANDS SURVEYED LIE WITHIN A PORTION OF SECTION 9, TOWNSHIP 13 NORTH, RANGE 18 EAST, M.D.M., AND THE SURVEY WAS COMPLETED ON AUGUST 17, 2020.
 3. THIS PLAT COMPLIES WITH THE APPLICABLE STATE STATUTES AND ANY LOCAL ORDINANCE AND IS NOT IN CONFLICT WITH THE PROVISIONS FOR N.R.S. 278.010 TO 278.630, INCLUSIVE.
 4. THE MONUMENTS ARE OF THE CHARACTER SHOWN AND OCCUPY THE POSITIONS INDICATED.

Jeffery W. Turner
 JEFFERY W. TURNER
 P.L.S. 21260
 1 OCT 20
 DATE



BASIS OF BEARINGS

THE MERIDIAN OF THIS SURVEY IS IDENTICAL WITH THAT AMENDED MAP OF SUBDIVISION NO. 2 OF ZEPHYR COVE PROPERTIES INC., BEING THE BEARING N36°30'W.

REFERENCES

- (R1) AMENDED MAP OF SUBDIVISION NO. 2 OF ZEPHYR COVE PROPERTIES INC., FILED FOR RECORD ON AUGUST 5, 1929 AS DOCUMENT NUMBER 267.
- (R2) RECORD OF SURVEY SUPPORTING A BOUNDARY LINE ADJUSTMENT, FILED FOR RECORD ON APRIL 7, 2006 AS DOCUMENT NUMBER 672388.

NOTE

THIS MAP IS BEING FILED TO DELINEATE PROPERTY LINES AS DESCRIBED IN DEEDS RECORDED IN THE OFFICIAL RECORDS OF DOUGLAS COUNTY, NEVADA.

LEGEND

- FOUND PROPERTY CORNER MONUMENT AS NOTED
- SET 3/4" IRON PIPE W/PLUG, PLS 21260
- (C) CALCULATED
- (M) MEASURED

TA TURNER & ASSOCIATES, INC.
LAND SURVEYING
 (775) 588-5658
 FAX (775) 588-9296
 308 DORLA COURT, SUITE 203 - ROUND HILL, NEVADA 89448
 P.O. BOX 5067 - STATELINE, NEVADA 89449
 JN:20162

COUNTY RECORDER'S CERTIFICATE

FILED FOR RECORD THIS 6th DAY OF October, 2020
 AT 15 MINUTES PAST 9 O'CLOCK A.M., AS DOCUMENT
 NUMBER 2020-953949
 RECORDED AT THE REQUEST OF RANDAL BAKER.
Karen Ellison
 DOUGLAS COUNTY RECORDER

SCALE: 1"=20' SHEET 1 OF 1

RECORD OF SURVEY
 FOR
Randal & Mallory Baker
 BEING LOT 3, BLK. C, AMENDED MAP OF SUBDIVISION NO. 2 OF ZEPHYR COVE PROPERTIES INC.
 PORTION OF SECTION 9, T.13N., R.18E., M.D.M.
 DOUGLAS COUNTY, NEVADA
 FILE NO. 20162.DWG OCTOBER 2020