



KAREN ELLISON, RECORDER

RECORDING REQUESTED BY:

John Langford
2575 State Route 338
Wellington, NV 89444



CORNER RECORD SURVEYOR'S CERTIFICATE

I, John R. Langford, a Professional Land Surveyor registered in the State of Nevada, certify that:

1. This corner record represents the establishment or restoration of a corner or accessory to a corner conducted under my direct supervision.
2. The monument or accessories perpetuated lie within Section 29, T 13 N, R 20 E, MDM, County of Douglas, and the establishment or restoration was completed on November 4, 2022.
3. This Corner Record has been filed pursuant to NRS 329.140 or 329.150 and complies with the provisions of NAC 329.010 and any local ordinances in effect on the date that the establishment or restoration was completed.
4. The monument or witness monument and accessories found are of the character shown, occupy the positions indicated, and are of sufficient durability.

JOHN R LANGFORD
PLS 4957



11/26/2022

MONUMENTATION NOTES

The centerline monument in Lantana Drive originally set per FINAL MAP #1008-8 FOR WINDHAVEN UNIT NO. 8 was lost during reconstruction and resurfacing of Lantana Drive. The monument found prior to disturbance was a 1-1/2"Ø aluminum cap inscribed PLS 3209 on a 5/8"Ø rebar down 0.3' in an 8"Ø cast iron monument well. The position of the monument is shown on Sheet 3 of 4 hereon and was measured using GPS-RTK methods.

After completion of resurfacing the monument was replaced at the measured position with a 1-1/2"Ø aluminum cap inscribed PLS4957 on a 5/8"Øx24' long rebar and was set down 0.4' in a monument well in accordance with the detail on Sheet 4 of 4 hereon.

RECORD REFERENCE

FINAL MAP #1008-8 FOR WINDHAVEN UNIT NO. 8, filed on September 11, 1997 as Document No. 421412.

APN 23-579-06
(DANCERB HIGHLANDS NEVADA, LLC)

1/2" P PER MAP
NO. 27559 - R.L. 446

10' INSURANCE
EXEMPT

10' INSURANCE
EXEMPT

10' INSURANCE
EXEMPT

10' INSURANCE
EXEMPT

10' INSURANCE
EXEMPT

CURVE DATA

No.	Δ	R	L	T	Ch.
1	2° 30' 23"	212.11'	93.99'	50.00'	08.08'
2	1° 21' 35"	212.11'	52.40'	28.20'	52.40'
3	1° 13' 37"	212.11'	47.59'	23.79'	47.59'
4	1° 58' 35"	212.11'	62.89'	32.99'	62.89'
5	2° 00' 46"	212.11'	63.84'	33.44'	63.84'
6	2° 00' 46"	212.11'	63.84'	33.44'	63.84'
7	2° 35' 23"	212.11'	101.34'	50.69'	101.34'
8	5° 14' 37"	20.00'	32.99'	12.84'	29.31'
9	8° 56' 51"	20.00'	30.84'	19.43'	27.97'
10	8° 56' 51"	20.00'	30.84'	19.43'	27.97'
11	8° 56' 46"	20.00'	31.89'	20.97'	29.48'
12	12° 55' 55"	62.89'	221.84'	111.39'	221.84'
13	14° 58' 35"	62.89'	240.69'	121.03'	240.69'
14	14° 58' 35"	62.89'	240.69'	121.03'	240.69'
15	1° 58' 35"	212.11'	47.59'	23.79'	47.59'
16	2° 51' 05"	212.11'	48.92'	24.46'	48.91'
17	3° 59' 22"	212.11'	58.44'	34.23'	58.42'
18	3° 54' 35"	212.11'	56.99'	33.55'	56.99'
19	2° 24' 37"	212.11'	39.76'	20.31'	39.76'
20	5° 12' 05"	62.89'	83.76'	41.92'	83.75'
21	5° 09' 45"	62.89'	83.13'	41.59'	83.10'
22	2° 10' 23"	62.89'	35.00'	17.59'	35.00'

- NOTES:**
- TOTAL AREA TO BE SUBDIVIDED IS 10,381.6 ACRES.
 - SEE MAP FOR LOCATION AND EXTENT OF CURVE DATA TO BE SET WITH 5/8" BEARING CAP.
 - TOTAL NUMBER OF LOTS IN THIS SUBDIVISION IS 40.
 - LEGEND:
 - FA 5/8" BEARING & CAP - PLS 6364
 - OR AS NOTED.
 - MONUMENT IN WELL TO BE SET AT COMPLETION OF ROAD IMPROVEMENTS.
 - CURVE DATA (SEE CURVE TABLES)
 - ALL PARCELS CREATED BY THIS MAP SHALL HAVE A 10' INSURANCE EXEMPT ZONE ADJACENT TO ALL STREET RIGHT-OF-WAY.

FUTURE DEVELOPMENT
WINHAVEN UNIT 7
PHASE B
(LED MALEY)

WINHAVEN UNIT 7
PHASE A - COMMON AREA
DOC. NO. 414453
(LED MALEY)

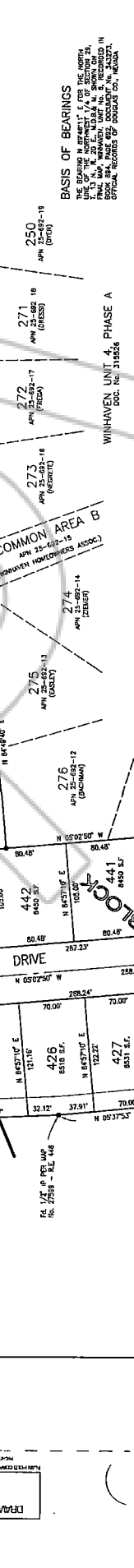
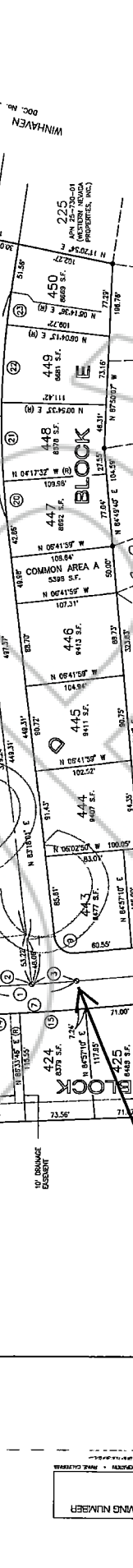
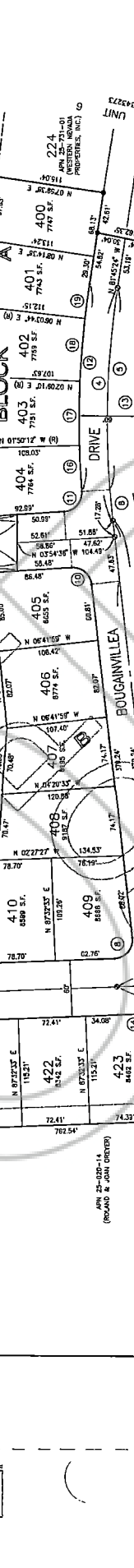
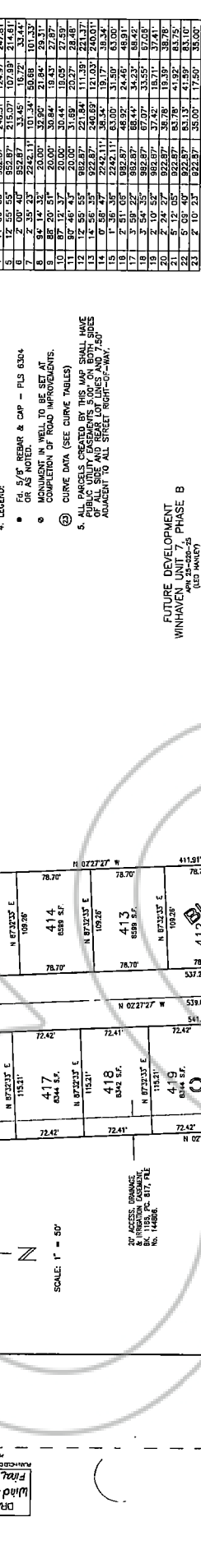
WINHAVEN UNIT 7
PHASE A
DOC. NO. 343272

WINHAVEN UNIT 3
DOC. NO. 252972

WINHAVEN UNIT 6
DOC. NO. 343272

WINHAVEN UNIT 6
DOC. NO. 343272

WINHAVEN UNIT 6
DOC. NO. 343272



FINAL MAP #1008-8

FOR

WINHAVEN, UNIT No. 8

BEING A PORTION OF THE NORTH 1/2 OF SECTION 29, TOWNSHIP 13 NORTH, RANGE 20 EAST, M.D.B. & M. DOUGLAS COUNTY NEVADA

SHEET 3 OF 4 SHEETS

DOCUMENT #421412

GRAPHIC SCALE: 1" = 50'

0 25 50 100 150

WESTERN ENGINEERING SERVICES
225 W. WASHINGTON STREET, SUITE 101
DENVER, COLORADO 80202
PHONE: 303.733.1111
FAX: 303.733.1112

DRAWING NUMBER

DRAWING NUMBER

DRAWING NUMBER

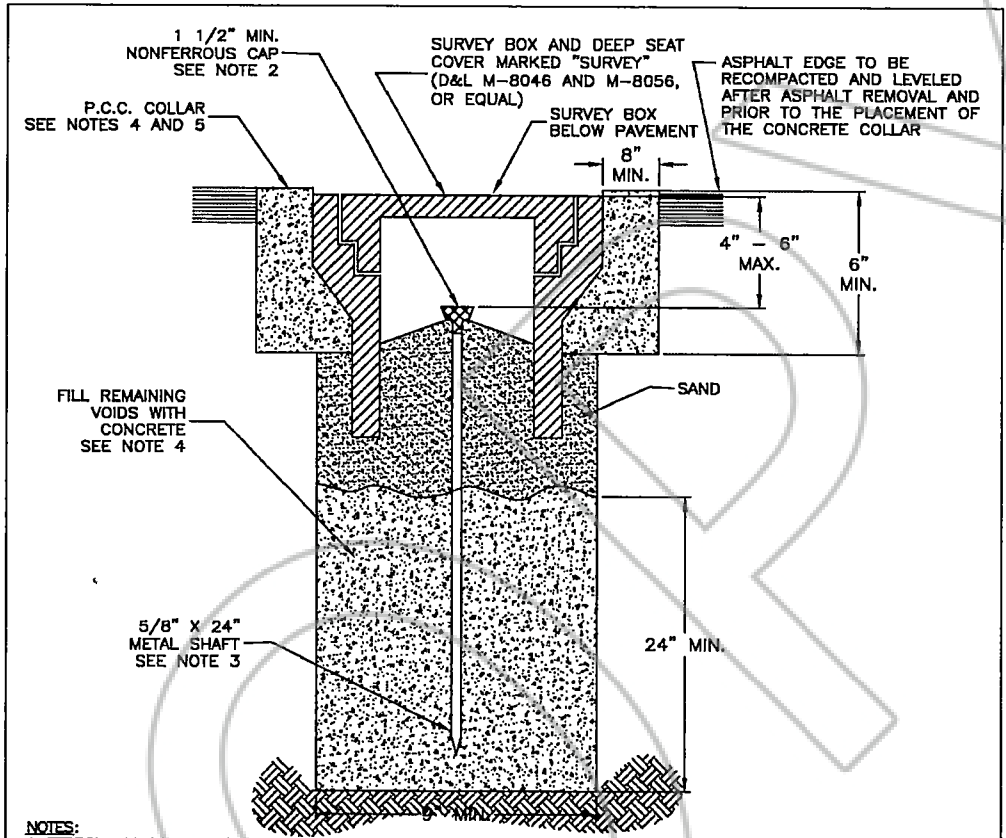
DRAWING NUMBER

Final Map #1008-8
Winhaven Unit # 8

DRAWING NUMBER

DRAWING NUMBER

DRAWING NUMBER



- NOTES:**
1. FERROUS METAL OVER MONUMENT FOR RECOVERY BY DIP NEEDLE OR MAGNETIC INSERT IN CAP.
 2. 1 1/2" MIN. NONFERROUS CAP WITH PROFESSIONAL LAND SURVEYOR NO. PERMANENTLY ATTACHED PRIOR TO PLACEMENT. PRE-PUNCHED CAPS SHALL NOT BE PERMITTED
 3. 5/8" METALLIC SHAFT (SMOOTH SHAFTS TO BE DEFORMED).
 4. FIBER-REINFORCED PORTLAND CEMENT CONCRETE (P.C.C.) SHALL HAVE THE FOLLOWING CHARACTERISTICS: 4000 PSI MIN. COMPRESSIVE STRENGTH AT 28 DAYS, MIN. 6 SACKS OF CEMENT PER CUBIC YARD WITH MAX. WATER-CEMENT RATIO OF 0.45, AIR ENTRAINMENT 6% ±1.5%, SLUMP AT 1 TO 4 INCHES. MIX DESIGN SHALL CONFORM TO THE REQUIREMENTS OF SECTION 337 OF STANDARD SPECIFICATIONS OF PUBLIC WORKS CONSTRUCTION (SSPWC). CEMENT SHALL BE TYPE II. ALL CEMENT CONCRETE SHALL HAVE A COARSE AGGREGATE GRADATION CONFORMING TO SIZE No. 67. POLYPROPYLENE OR CELLULOSE FIBERS SHALL BE ADDED TO THE P.C.C. AT 1.5 LBS. PER CUBIC YARD. ALL MATERIALS SHALL CONFORM TO SSPWC.
 5. P.C.C. COLLARS IN ALL ROADWAYS SHALL BE PROTECTED FROM TRAFFIC LOADS UNTIL MINIMUM 3000 PSI IS ATTAINED.

NO. REVISION DATE			STANDARD DETAIL FOR PUBLIC WORKS CONSTRUCTION		SECTION: DOUGLAS COUNTY	
			MONUMENTS		DATE: JULY 2017	
					DWG: A12	