

SURVEYOR'S CERTIFICATE

I, JEFFERY W. TURNER, A PROFESSIONAL LAND SURVEYOR LICENSED IN THE STATE OF NEVADA, CERTIFY THAT:
 1. THIS IS A TRUE AND ACCURATE REPRESENTATION OF THE LANDS SURVEYED UNDER MY SUPERVISION AT THE INSTANCE OF HAUSS & LAYMAN.
 2. THE LANDS SURVEYED LIE WITHIN A PORTION OF SECTION 23, TOWNSHIP 13 NORTH, RANGE 18 EAST, M.D.M., AND THE SURVEY WAS COMPLETED ON 29 AUGUST, 2023.
 3. THIS PLAT COMPLIES WITH THE APPLICABLE STATE STATUTES AND ANY LOCAL ORDINANCE AND IS NOT IN CONFLICT WITH THE PROVISIONS FOR N.R.S. 278.010 TO 278.630, INCLUSIVE.
 4. THE MONUMENTS ARE OF THE CHARACTER SHOWN AND OCCUPY THE POSITIONS INDICATED.

Jeffery W. Turner
 JEFFERY W. TURNER
 P.L.S. 21260

30 OCT 23
 DATE



LEGEND

- FOUND 3/4" IRON PIPE W/PLASTIC PLUG, STAMPED "RLS 3519", OR FOUND AS NOTED
- SET 3/4" IRON PIPE W/PLASTIC PLUG, STAMPED "PLS 21260", OR SET AS NOTED
- (C) CALCULATED
- (M) MEASURED

BASIS OF BEARINGS

THE MERIDIAN OF THIS SURVEY IS IDENTICAL WITH THAT OF KINGSBURY MEADOWS SUBDIVISION(R1), BEING THE BEARING N 00°11'24" W AS MEASURED BETWEEN FOUND MONUMENTS.

REFERENCES

- (R1) KINGSBURY MEADOWS SUBDIVISION, FILED FOR RECORD ON JULY 5, 1955 AS DOCUMENT NUMBER 10542.
- (R2) FIRST ADDITION TO KINGSBURY MEADOWS SUBDIVISION, FILED FOR RECORD ON JULY 17, 1957 AS DOCUMENT NUMBER 012441.

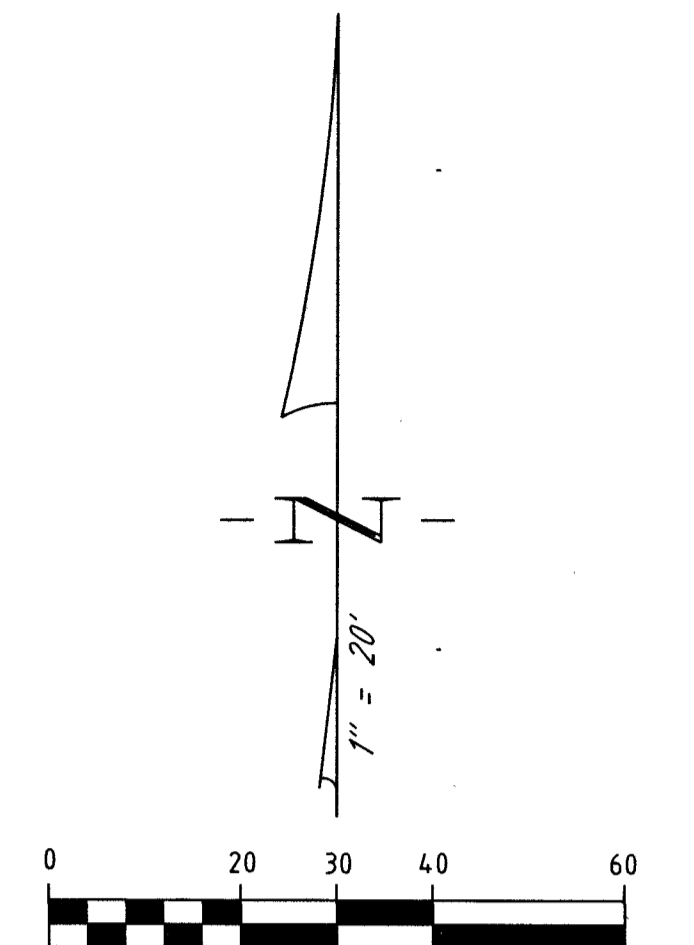
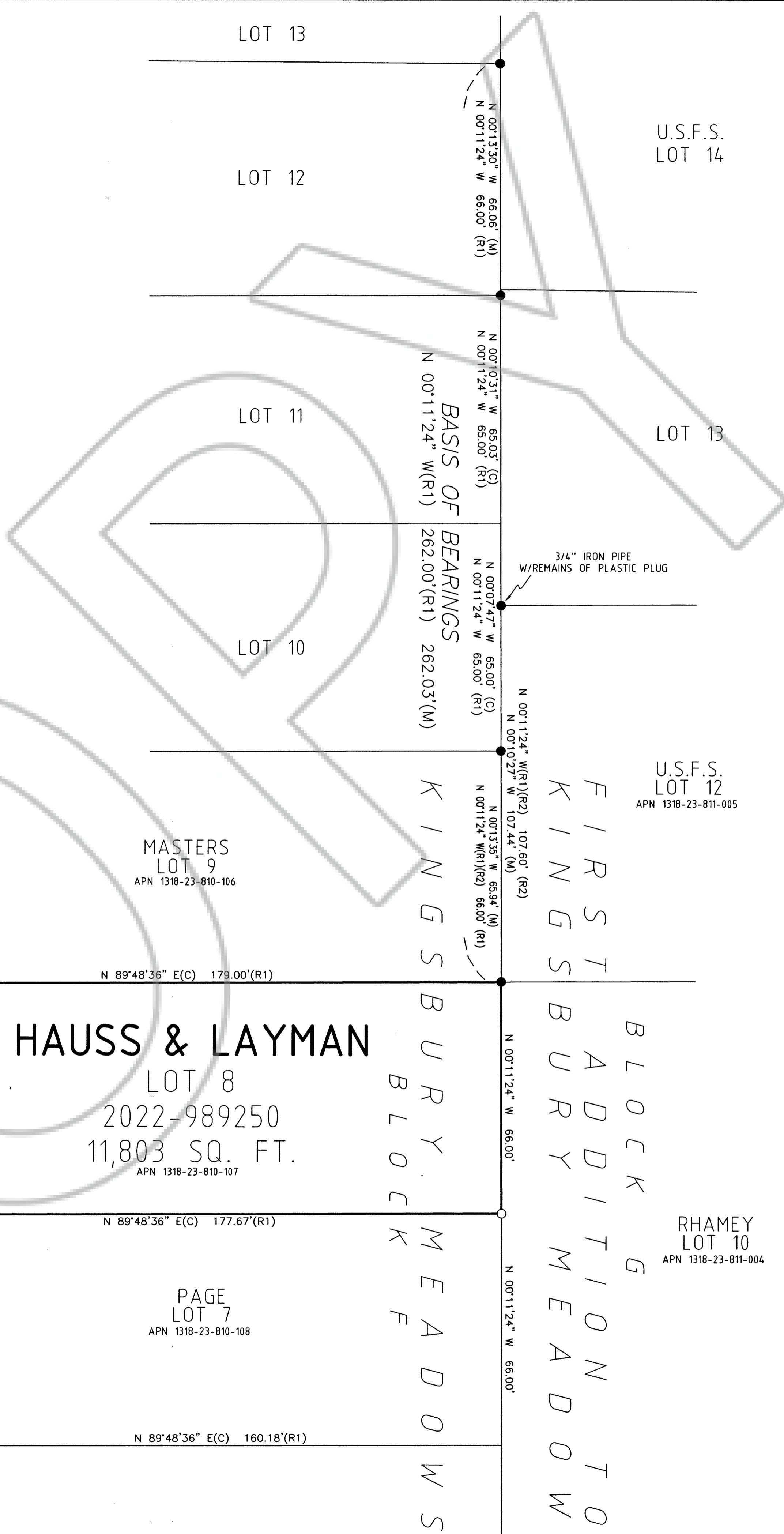
NOTE

THIS MAP IS BEING FILED TO DELINEATE PROPERTY LINES AS DESCRIBED IN DEEDS RECORDED IN THE OFFICIAL RECORDS OF DOUGLAS COUNTY, NEVADA.

R=225.00'(R1)
 Δ=6°19'58"(C)
 L=24.87'(C) 24.44'(R1)
 CH=N 03°15'26" W 24.86'(C)

R=225.00'(R1)
 Δ=16°51'19"(C)
 L=66.19'(C) 66.17'(M)
 CH=N 14°44'54" W 65.95'(C)

R=275.00'(R1)
 Δ=0°29'23"(C)
 L=2.35'(C) 2.09'(R1)
 CH=N 23°01'47" W 2.35'(C)



TURNER & ASSOCIATES, INC.
 LAND SURVEYING
 (775) 588-5658
 ADMIN@TURNERSURVEYING.NET
 308 DORLA COURT, SUITE 203 - ROUND HILL, NEVADA 89448
 P.O. BOX 5067 - STATELINE, NEVADA 89449
 JN:23127

COUNTY RECORDER'S CERTIFICATE
 FILED FOR RECORD THIS 30th DAY OF October, 2023,
 AT 8 MINUTES PAST 4 O'CLOCK P. M., AS DOCUMENT
 NUMBER 2023-1001850.
 RECORDED AT THE REQUEST OF HAUSS & LAYMAN.
Shawayne Carren, Deputy
 DOUGLAS COUNTY RECORDER

SCALE: 1"=20' SHEET 1 OF 1
RECORD OF SURVEY
 FOR
HAUSS & LAYMAN
 PORTION OF SECTION 23, T.13N., R.18E., M.D.M.
 BEING LOT 8, BLOCK F OF KINGSBURY MEADOWS SUBDIVISION
 DOUGLAS COUNTY, NEVADA
 FILE NO. 23127.DWG OCTOBER 2023