

Coordinate System:
 NAD 1983 BLM Zone 11N
 Projection: Transverse Mercator
 Datum: North American 1983
 Units: Foot US

All Bearings and Azimuths are reported in UTM Grid North.
 All Degrees and Minutes are reported to the nearest minute.
 All Distances are reported in feet to the nearest foot.
 The depicted Township, Range and Sections are a product of the Bureau of Land Management, Cadastral Survey. Commonly known as the PLSS, CadNSDI that originates from the BLM GCDB program.

DOUGLAS COUNTY, NV **2023-1002575**

Rec:\$105.00
 Total:\$105.00

11/22/2023 09:24 AM

BENGT ANDERS HOGRELIUS

Pgs=1



00175152202310025750010016

SHAWNYNE GARREN, RECORDER

RECORDER'S STAMP

18

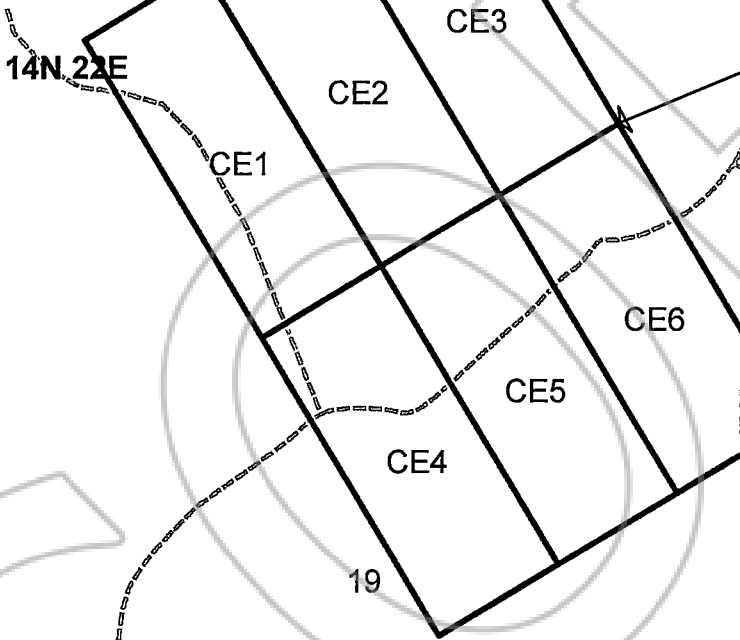
17

The centerline of the claims is at an azimuth of 147° 23'

The SE corner of CE3 is located 1511 ft from the SW corner of Section 17, T14N R22E at an azimuth of 245° 57'

14N, 22E

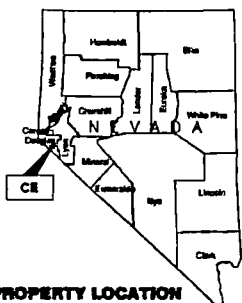
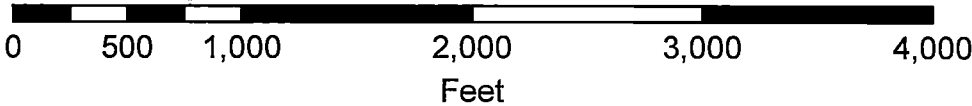
Washoe Ranches / Washoe Tribe



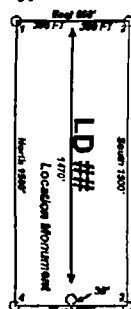
Locator:
 Aguila Gold, Inc.
 A Nevada Domestic Corporation
 1305-1090 West Georgia St.
 Vancouver BC V6E 3V7

"CE" lode claims Location Dates:
 10/18/2023. CE 1-6 in Sections 18 and 19, T14N, R22E. all in Douglas County, Nevada, M.D.B.&M.

1 in = 833 ft



Typical Claim



Notes:

Location Monuments are set 30' from claim end lines unless noted otherwise. All location and corner monuments are 2" X 2" X 4' wooden posts with scribed metal tags. All claims are 600' by 1500' unless noted otherwise.

Location Map of CE 1 to CE 6

Map 1 of 1

File: Copper_Eagle_Claim_Legal.mxd

Date: November 20, 2023

Drawn By: Anders Hogrelius

Field Work By: Aguila Copper Corp.