

- LEGEND**
- FOUND MONUMENT AS NOTED
 - (C) CALCULATED
 - (M) MEASURED
 - (R) RECORD

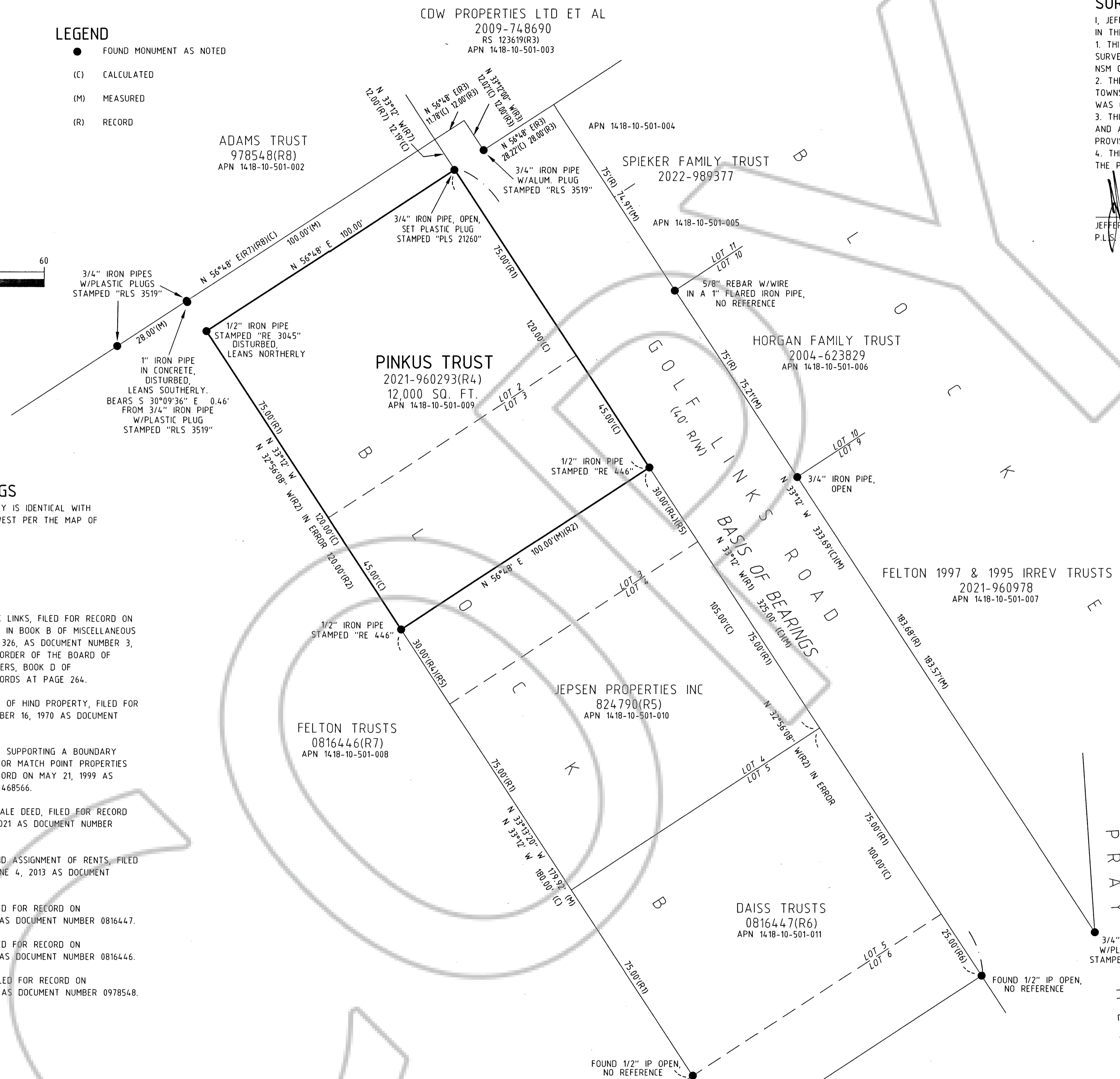
BASIS OF BEARINGS
 THE MERIDIAN OF THIS SURVEY IS IDENTICAL WITH THE BEARING NORTH 33°12' WEST PER THE MAP OF GLENBROOK LINKS.

REFERENCES

- (R1) MAP OF GLENBROOK LINKS, FILED FOR RECORD ON SEPTEMBER 27, 1911 IN BOOK B OF MISCELLANEOUS RECORDS AT PAGE 326, AS DOCUMENT NUMBER 3, AND VACATED BY ORDER OF THE BOARD OF COUNTY COMMISSIONERS, BOOK D OF MISCELLANEOUS RECORDS AT PAGE 264.
- (R2) RECORD OF SURVEY OF HIND PROPERTY, FILED FOR RECORD ON SEPTEMBER 16, 1970 AS DOCUMENT NUMBER 49486.
- (R3) RECORD OF SURVEY SUPPORTING A BOUNDARY LINE ADJUSTMENT FOR MATCH POINT PROPERTIES LLC, FILED FOR RECORD ON MAY 21, 1999 AS DOCUMENT NUMBER 468566.
- (R4) GRANT, BARGAIN, SALE DEED, FILED FOR RECORD ON JANUARY 20, 2021 AS DOCUMENT NUMBER 2021-960293.
- (R5) DEED OF TRUST AND ASSIGNMENT OF RENTS, FILED FOR RECORD ON JUNE 4, 2013 AS DOCUMENT NUMBER 824790.
- (R6) TRUSTEE DEED, FILED FOR RECORD ON JANUARY 17, 2013 AS DOCUMENT NUMBER 0816447.
- (R7) TRUSTEE DEED, FILED FOR RECORD ON JANUARY 17, 2013 AS DOCUMENT NUMBER 0816446.
- (R8) QUITCLAIM DEED, FILED FOR RECORD ON DECEMBER 17, 2021 AS DOCUMENT NUMBER 0978548.

NOTE

THIS MAP IS BEING FILED TO DELINEATE PROPERTY LINES AS DESCRIBED IN DEEDS RECORDED IN THE OFFICIAL RECORDS OF DOUGLAS COUNTY, NEVADA.



SURVEYOR'S CERTIFICATE

I, JEFFERY W. TURNER, A PROFESSIONAL LAND SURVEYOR LICENSED IN THE STATE OF NEVADA, CERTIFY THAT:
 1. THIS IS A TRUE AND ACCURATE REPRESENTATION OF THE LANDS SURVEYED UNDER MY SUPERVISION AT THE INSTANCE OF NSM CONSTRUCTION.
 2. THE LANDS SURVEYED LIE WITHIN A PORTION OF SECTION 10, TOWNSHIP 14 NORTH, RANGE 18 EAST, M.D.M., AND THE SURVEY WAS COMPLETED ON MARCH 28, 2024.
 3. THIS PLAT COMPLIES WITH THE APPLICABLE STATE STATUTES AND ANY LOCAL ORDINANCE AND IS NOT IN CONFLICT WITH THE PROVISIONS FOR N.R.S. 278.010 TO 278.630, INCLUSIVE.
 4. THE MONUMENTS ARE OF THE CHARACTER SHOWN AND OCCUPY THE POSITIONS INDICATED.

JEFFERY W. TURNER
 P.L.S. 21260
 17 APRIL 24
 DATE



COUNTY RECORDER'S CERTIFICATE

FILED FOR RECORD THIS 18 DAY OF APRIL, 2024,
 AT 23 MINUTES PAST 11 O'CLOCK A.M., AS DOCUMENT
 NUMBER 2024-1006816
 RECORDED AT THE REQUEST OF NSM CONSTRUCTION.
 [Signature] DEPUTY
 DOUGLAS COUNTY RECORDER - SHAWNNE GARDEN

SCALE: 1"=20' SHEET 1 OF 1

TURNER & ASSOCIATES, INC.
 LAND SURVEYING

(775) 588-5658
 FAX (775) 588-9296
 308 DORLA COURT, SUITE 203 - ROUND HILL, NEVADA 89448
 P.O. BOX 5067 - STATELINE, NEVADA 89449
 JN:24022

RECORD OF SURVEY
 FOR
**GARY STUART PINKUS &
 MARY SUTTON PINKUS**

PORTION OF SECTION 10, T.14N., R.18E., M.D.M.
 BEING LOT 2 AND A PORTION OF LOT 3, BLOCK B,
 MAP OF GLENBROOK LINKS (VACATED)
 DOUGLAS COUNTY, NEVADA

FILE NO. 24022R0S.DWG APRIL 2024