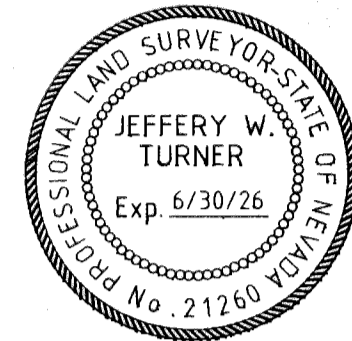


SURVEYOR'S CERTIFICATE

I, JEFFERY W. TURNER, A PROFESSIONAL LAND SURVEYOR LICENSED IN THE STATE OF NEVADA, CERTIFY THAT:
 1. THIS IS A TRUE AND ACCURATE REPRESENTATION OF THE LANDS SURVEYED UNDER MY SUPERVISION AT THE INSTANCE OF JOHN S. PRINGLE.
 2. THE LANDS SURVEYED LIE WITHIN A PORTION OF SECTION 10, TOWNSHIP 13 NORTH, RANGE 18 EAST, M.D.M., AND THE SURVEY WAS COMPLETED ON MAY 17, 2024.
 3. THIS PLAT COMPLIES WITH THE APPLICABLE STATE STATUTES AND ANY LOCAL ORDINANCE AND IS NOT IN CONFLICT WITH THE PROVISIONS FOR N.R.S. 278.010 TO 278.630, INCLUSIVE.
 4. THE MONUMENTS ARE OF THE CHARACTER SHOWN AND OCCUPY THE POSITIONS INDICATED.

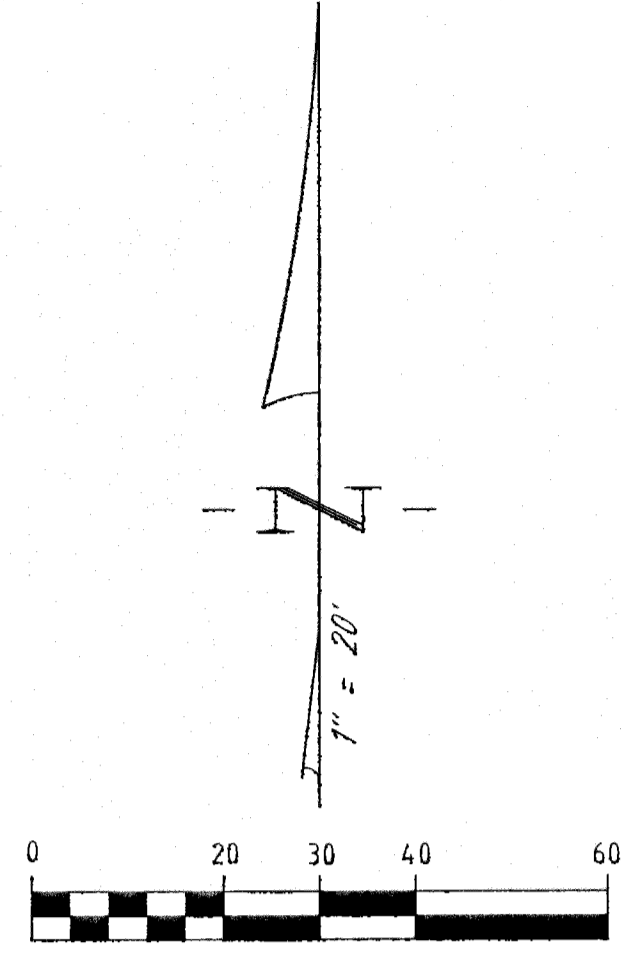
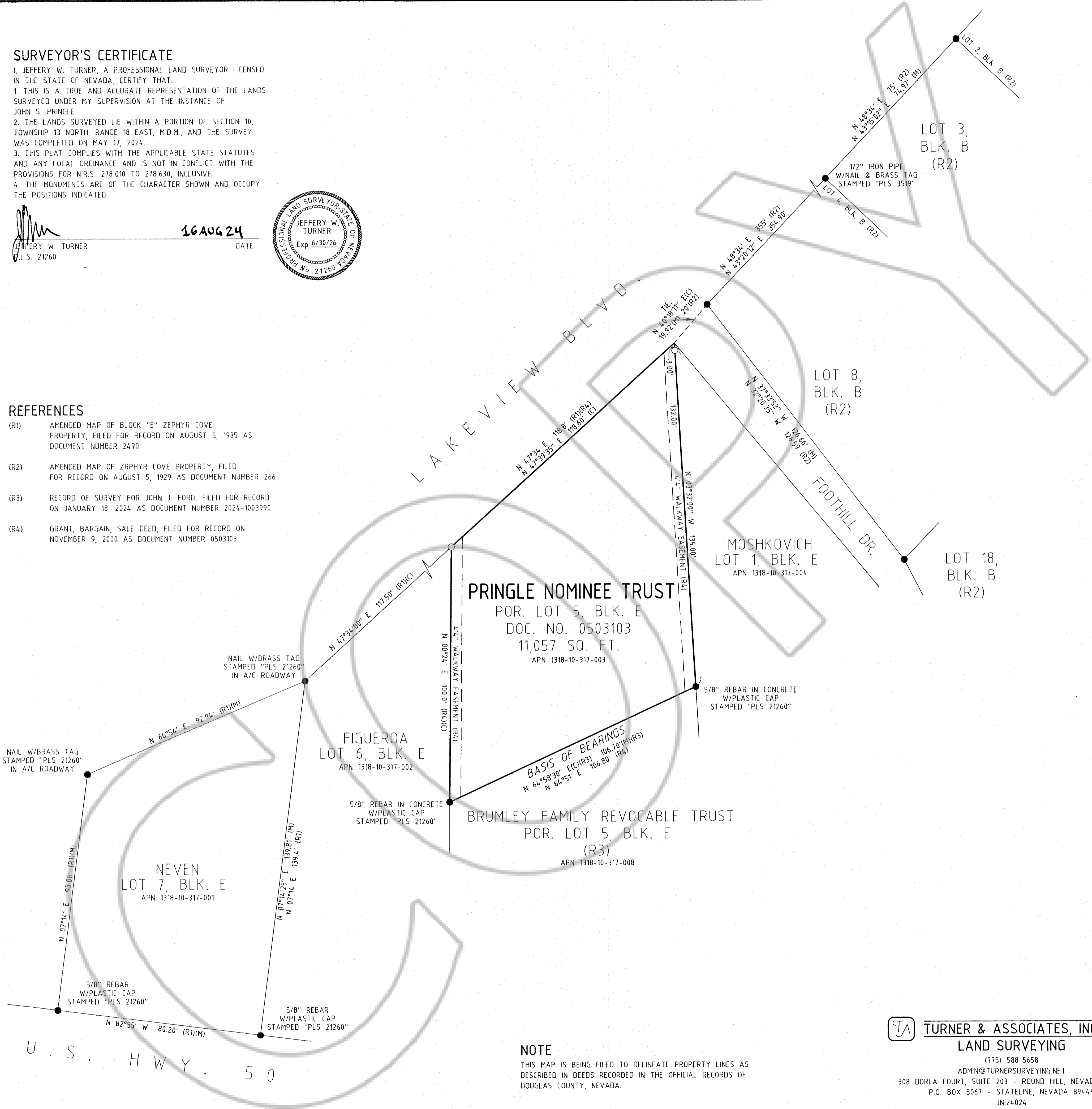
JEFFERY W. TURNER
 L.S. 21260

16 AUG 24
 DATE



REFERENCES

- (R1) AMENDED MAP OF BLOCK "E" ZEPHYR COVE PROPERTY, FILED FOR RECORD ON AUGUST 5, 1935 AS DOCUMENT NUMBER 2490
- (R2) AMENDED MAP OF ZEPHYR COVE PROPERTY, FILED FOR RECORD ON AUGUST 5, 1929 AS DOCUMENT NUMBER 266
- (R3) RECORD OF SURVEY FOR JOHN J. FORD, FILED FOR RECORD ON JANUARY 18, 2024 AS DOCUMENT NUMBER 2024-1003990
- (R4) GRANT, BARGAIN, SALE DEED, FILED FOR RECORD ON NOVEMBER 9, 2000 AS DOCUMENT NUMBER 0503103



BASIS OF BEARINGS

THE MERIDIAN OF THIS SURVEY IS IDENTICAL WITH THAT OF AMENDED MAP OF BLOCK "E" OF ZEPHYR COVE PROPERTY, FILED FOR RECORD ON AUGUST 5, 1935 AS DOCUMENT NUMBER 2490, AS CALCULATED BETWEEN FOUND MONUMENTS.

LEGEND

- FOUND 3/4" IRON PIPE W/PLASTIC PLUG STAMPED "PLS 3519", OR FOUND MONUMENT AS NOTED
- SET 3/4" IRON PIPE W/PLASTIC PLUG, STAMPED "PLS 21260", OR SET AS NOTED
- (C) CALCULATED
- (M) MEASURED

NOTE

THIS MAP IS BEING FILED TO DELINEATE PROPERTY LINES AS DESCRIBED IN DEEDS RECORDED IN THE OFFICIAL RECORDS OF DOUGLAS COUNTY, NEVADA.

TURNER & ASSOCIATES, INC.
 LAND SURVEYING
 (775) 588-5658
 ADMIN@TURNERSURVEYING.NET
 308 DORLA COURT, SUITE 203 - ROUND HILL, NEVADA 89448
 P.O. BOX 5067 - STATELINE, NEVADA 89449
 JN24024

COUNTY RECORDER'S CERTIFICATE

FILED FOR RECORD THIS 16th DAY OF August, 2024,
 AT 57 MINUTES PAST 12 O'CLOCK P. M., AS DOCUMENT
 NUMBER 2024-1011054
 RECORDED AT THE REQUEST OF JOHN S. PRINGLE.

Shawyne Craven
 DOUGLAS COUNTY RECORDER

SCALE: 1"=20'

SHEET 1 OF 1

RECORD OF SURVEY

FOR
PRINGLE NOMINEE TRUST

PORTION OF SECTION 10, T.13N., R.18E., M.D.M.
 BEING A PORTION OF LOT 5, AMENDED MAP OF BLOCK "E"
 DOUGLAS COUNTY, NEVADA

FILE NO. 24024 ROS.DWG

JUNE 2024