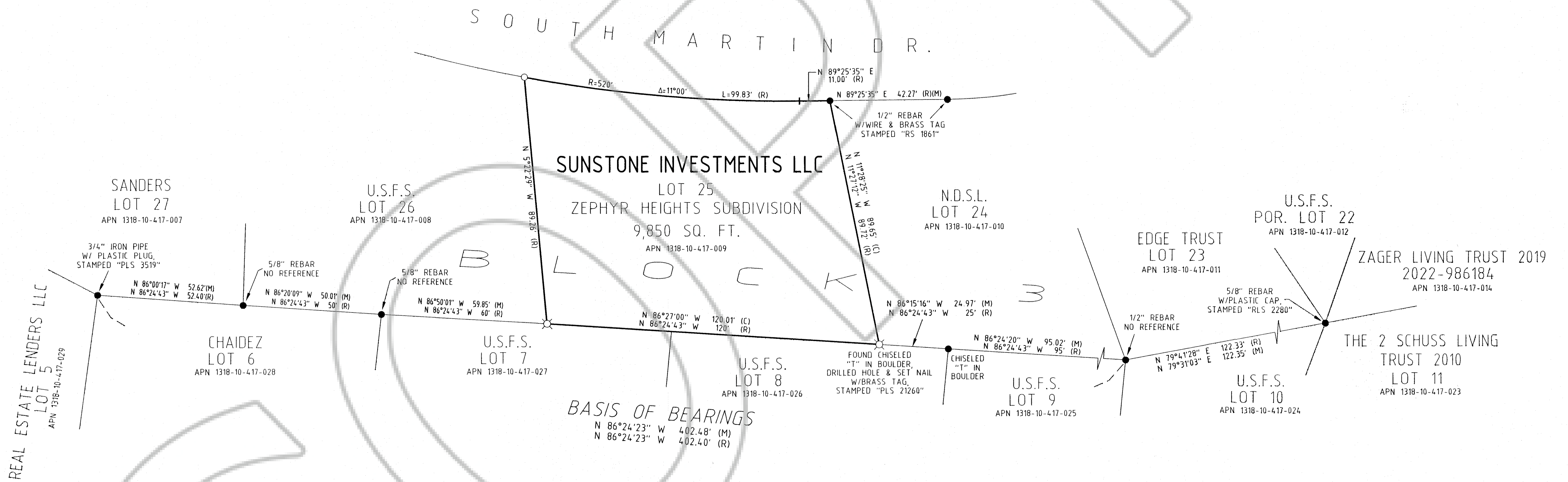
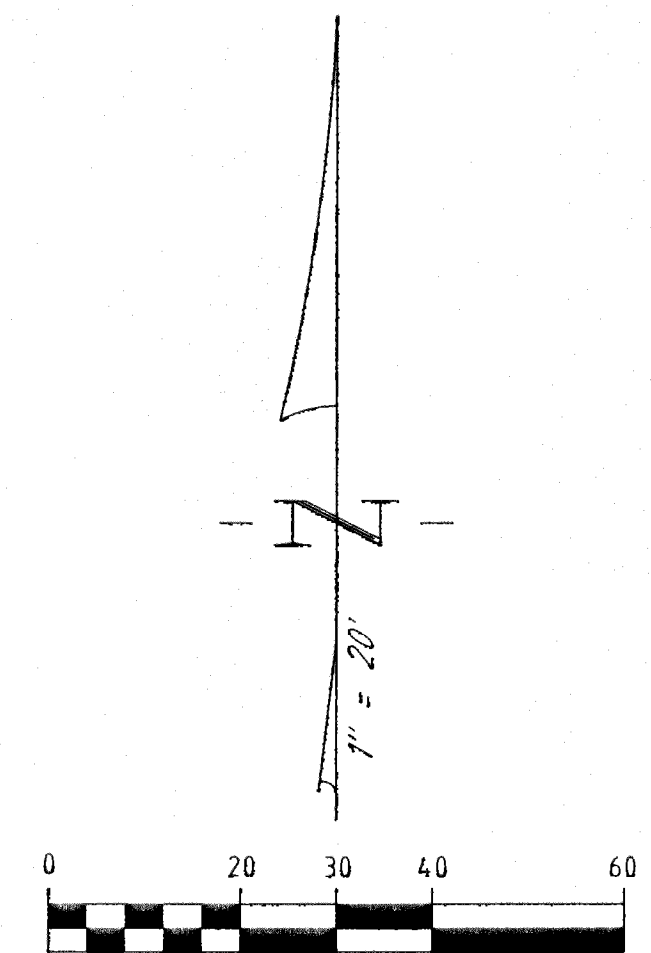
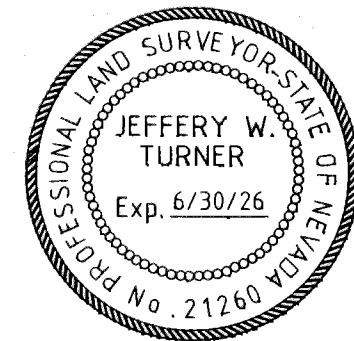


SURVEYOR'S CERTIFICATE

I, JEFFERY W. TURNER, A PROFESSIONAL LAND SURVEYOR LICENSED IN THE STATE OF NEVADA, CERTIFY THAT:
 1. THIS IS A TRUE AND ACCURATE REPRESENTATION OF THE LANDS SURVEYED UNDER MY SUPERVISION AT THE INSTANCE OF SUNSTONE INVESTMENTS, LLC.
 2. THE LANDS SURVEYED LIE WITHIN THE SW 1/4 OF THE SW 1/4 OF SECTION 10, TOWNSHIP 13 NORTH, RANGE 18 EAST, M.D.M., AND THE SURVEY WAS COMPLETED ON JULY 15, 2024.
 3. THIS PLAT COMPLIES WITH THE APPLICABLE STATE STATUTES AND ANY LOCAL ORDINANCE AND IS NOT IN CONFLICT WITH THE PROVISIONS FOR N.R.S. 278.010 TO 278.630, INCLUSIVE.
 4. THE MONUMENTS ARE OF THE CHARACTER SHOWN AND OCCUPY THE POSITIONS INDICATED.

JEFFERY W. TURNER
 P.L.S. 21260

16 AUG 24 DATE



BASIS OF BEARINGS

THE MERIDIAN OF THIS SURVEY IS IDENTICAL WITH THAT OF ZEPHYR HEIGHTS SUBDIVISION, FILED FOR RECORD ON JULY 5, 1947 AS DOCUMENT 5160.

NOTE

THIS MAP IS BEING FILED TO DELINEATE PROPERTY LINES AS DESCRIBED IN DEEDS RECORDED IN THE OFFICIAL RECORDS OF DOUGLAS COUNTY, NEVADA.

COUNTY RECORDER'S CERTIFICATE

FILED FOR RECORD THIS 16th DAY OF August, 2024,
 AT 57 MINUTES PAST 12 O'CLOCK P.M., AS DOCUMENT
 NUMBER 2024-1011056
 RECORDED AT THE REQUEST OF SUNSTONE INVESTMENTS, LLC.

Shawnynne Carren, Deputy
 DOUGLAS COUNTY RECORDER

SCALE: 1"=20' SHEET 1 OF 1

TURNER & ASSOCIATES, INC.
 LAND SURVEYING
 (775) 588-5658
 ADMIN@TURNERSURVEYING.NET
 308 DORLA COURT, SUITE 203 - ROUND HILL, NEVADA 89448
 P.O. BOX 5067 - STATELINE, NEVADA 89449
 JN: 24101

RECORD OF SURVEY
 FOR
SUNSTONE INVESTMENTS, LLC
 A POR. OF THE SW 1/4 OF THE SW 1/4 OF SECTION 10,
 T.13N., R.18E., M.D.M.
 BEING LOT 25, BLK. 3 ZEPHYR HEIGHTS SUBDIVISION
 DOUGLAS COUNTY, NEVADA
 FILE NO. 24101-ROS.DWG JULY 2024